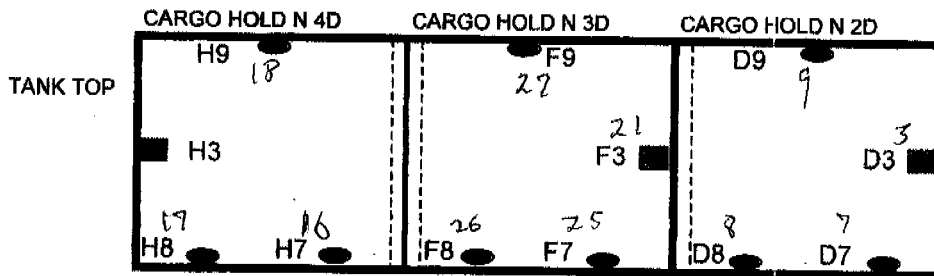
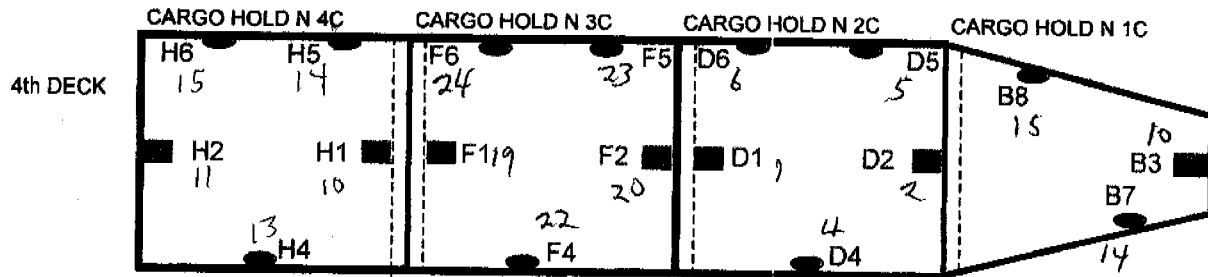
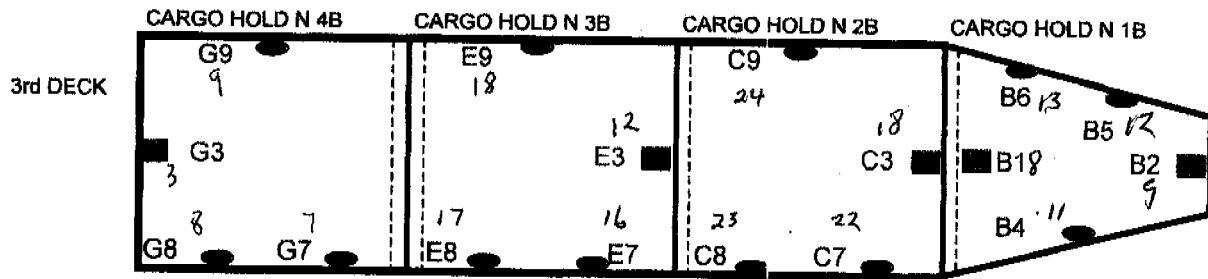
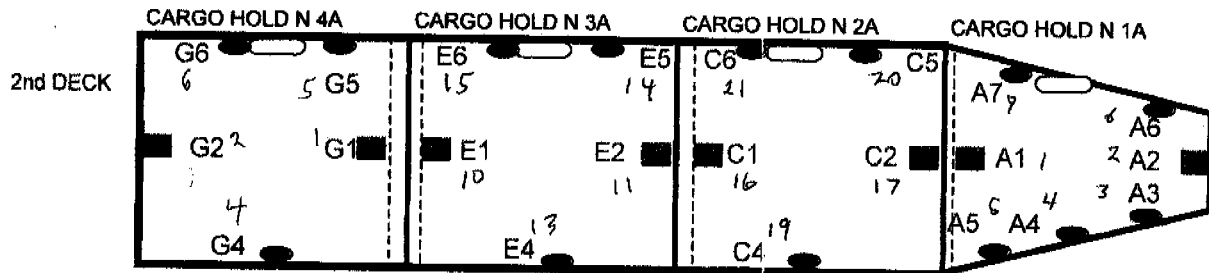
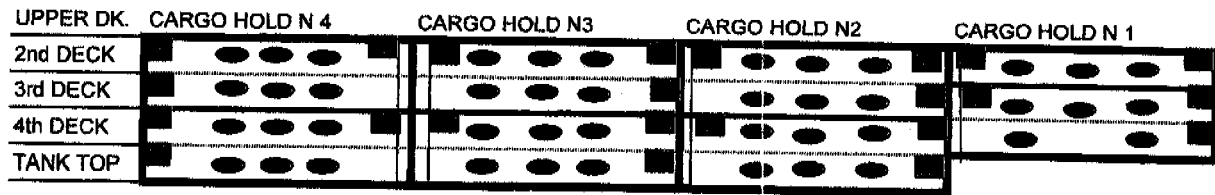


# SENSOR ARRANGEMENT FOR U.S.D.A. REPORT.



- FIXED SENSOR (WITH 5 M. CABLE) 23 PCS. 1 RECORDER: A1-A7; B1-B8; C1-C9.
- NON-FIXED SENSOR (WITH 15M. CABLE) 46 PCS. 2 RECORDER: D1=D9; E1-E9; F1-F9.
- 3 RECORDER: G1-G9; H1-H9.