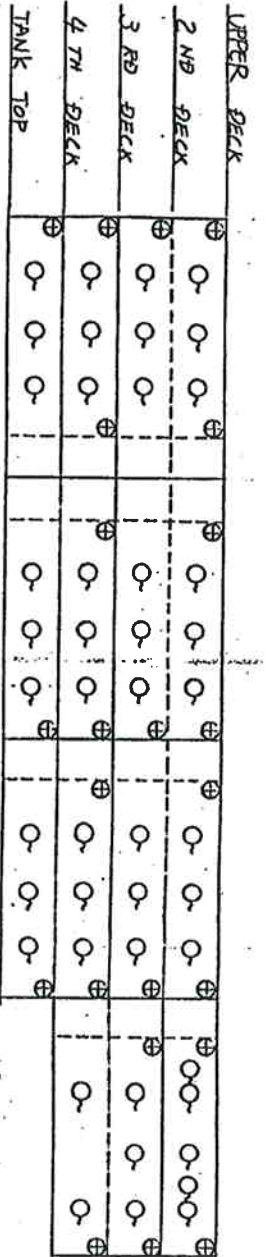
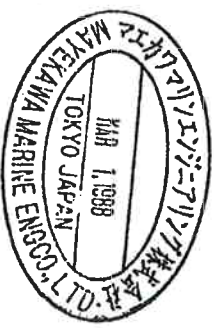
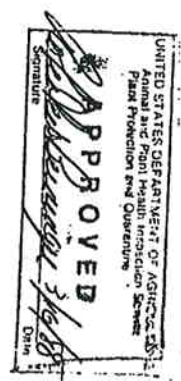
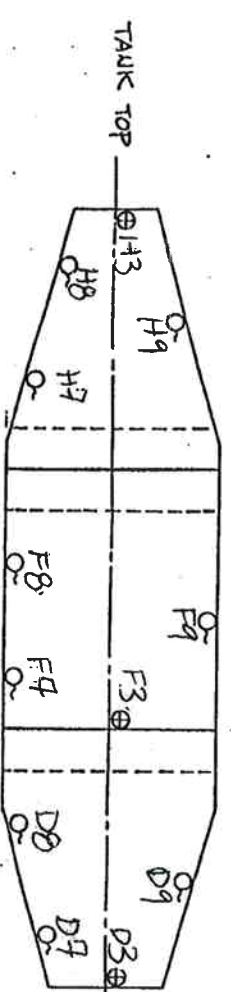
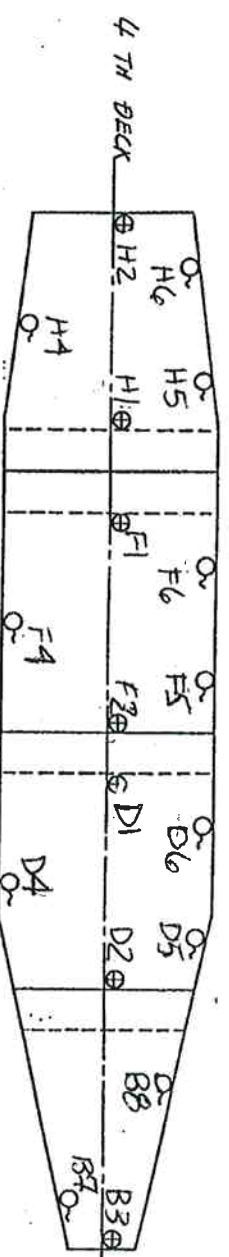
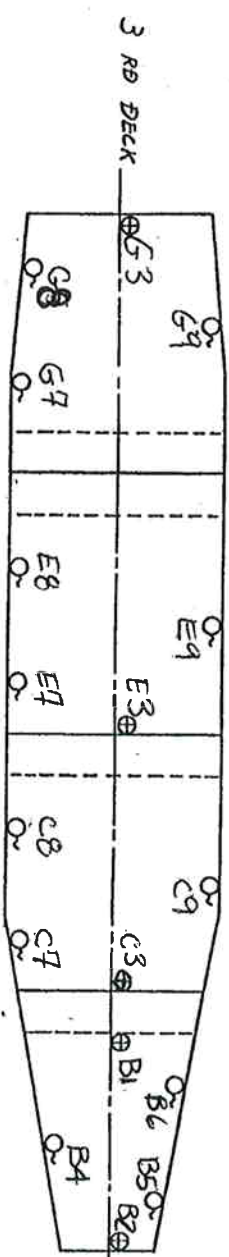
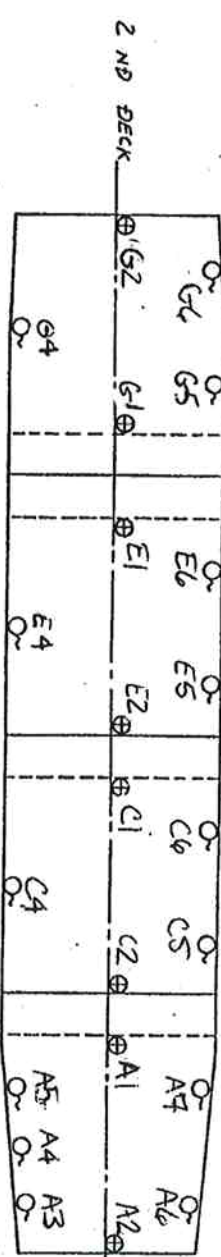


DRAWING FOR APPROVAL



No.4 CARGO HOLD    No.3 CARGO HOLD    No.2 CARGO HOLD    No.1 CARGO HOLD



⊕ FIXED SENSOR ( with 5m cable )  
○ NON-FIXED SENSOR ( with 15m cable )

△ Mar 1, '88 Revised the numbers of non-fixed sensor for No.1A Hold.

MESSRS. SASEBO HEAVY INDUSTRIES CO., LTD.

FOR SNo. 364 365

DRAWING OF SENSOR ARRANGEMENT FOR U.S.D.A REPORT

SCALE N.S. DRAWING NO. E 58716 - 84

NAME DESIGNED DRAWN CHECKED APPROVED

DATE

SYRCOM MATEKAWA MARINE ENGINEERING CO., LTD. TOKYO JAPAN