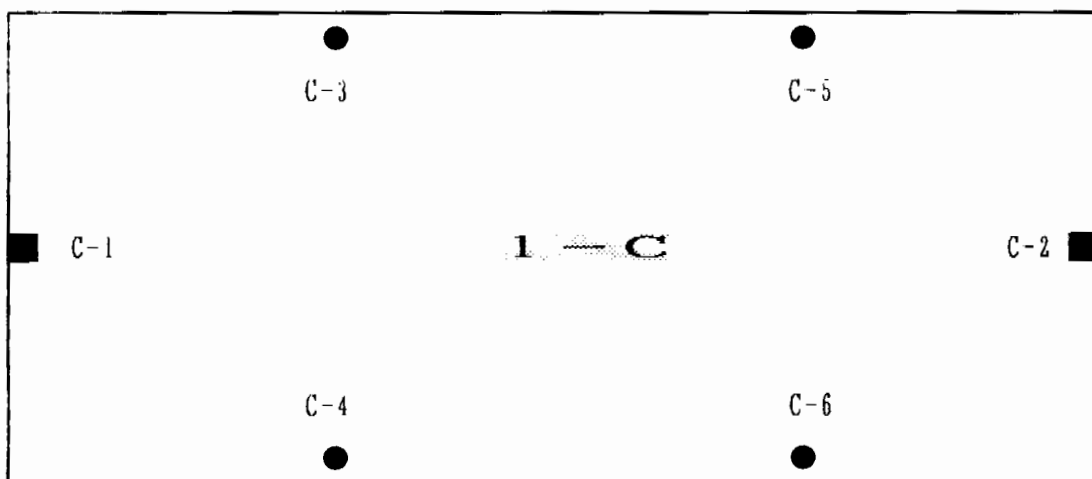
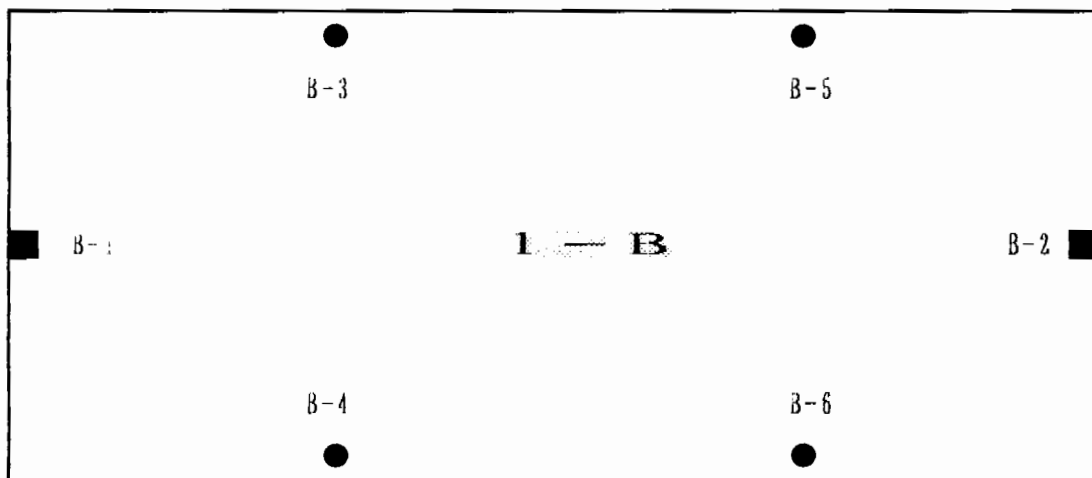
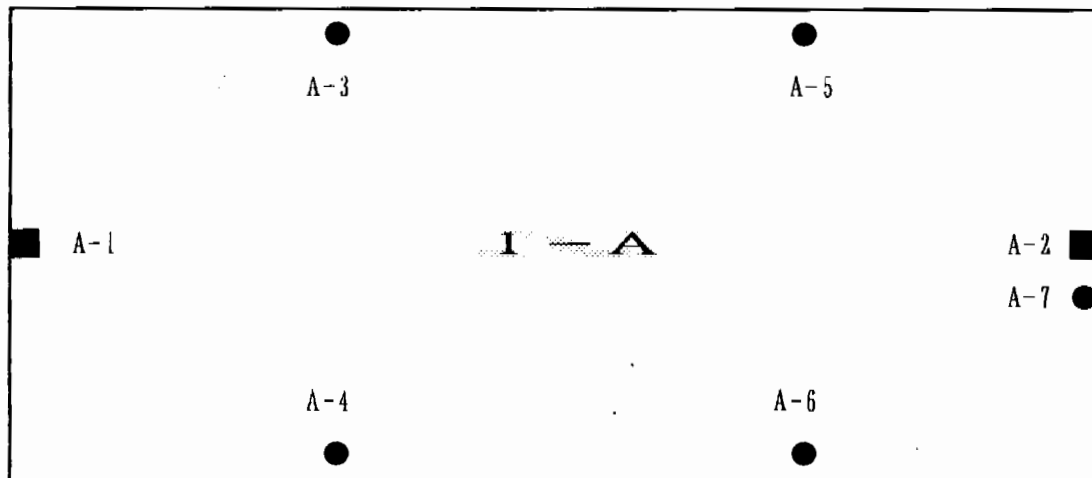
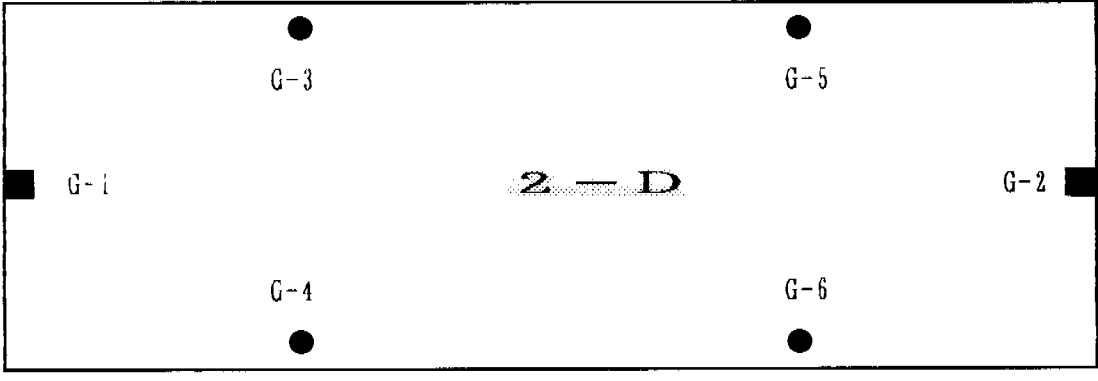
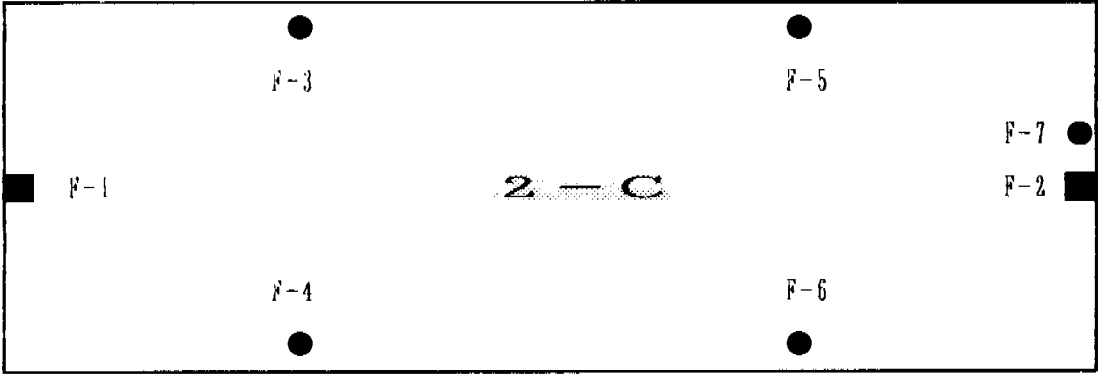
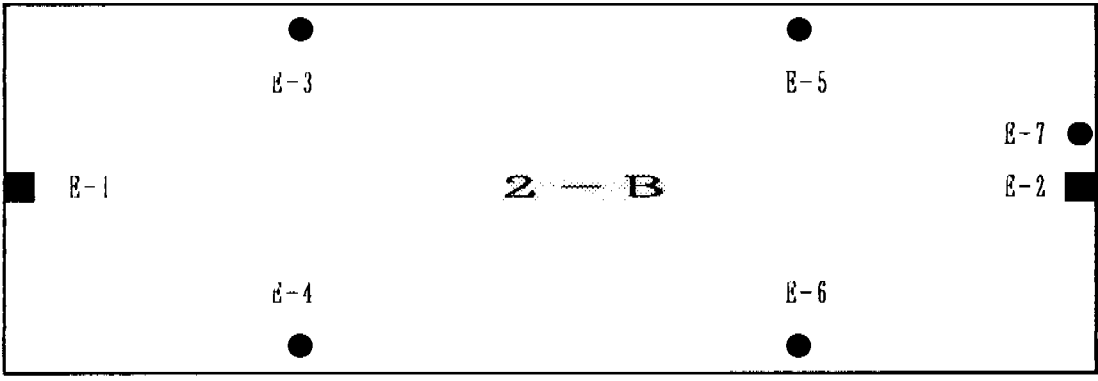
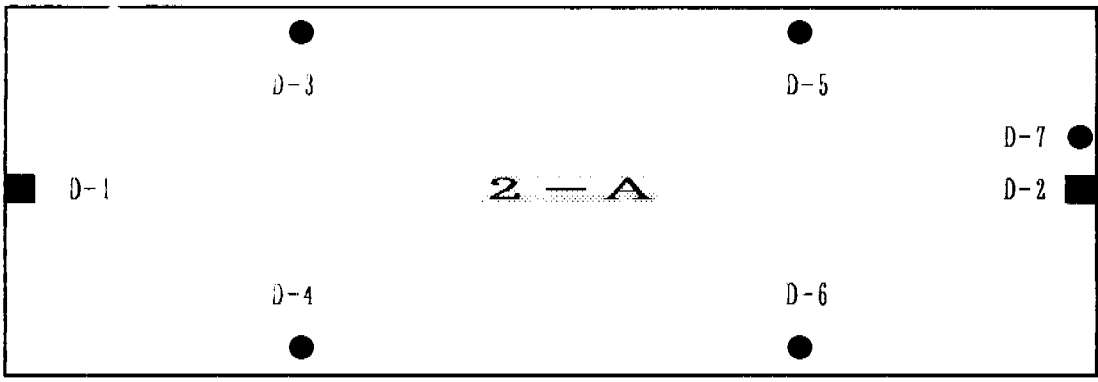


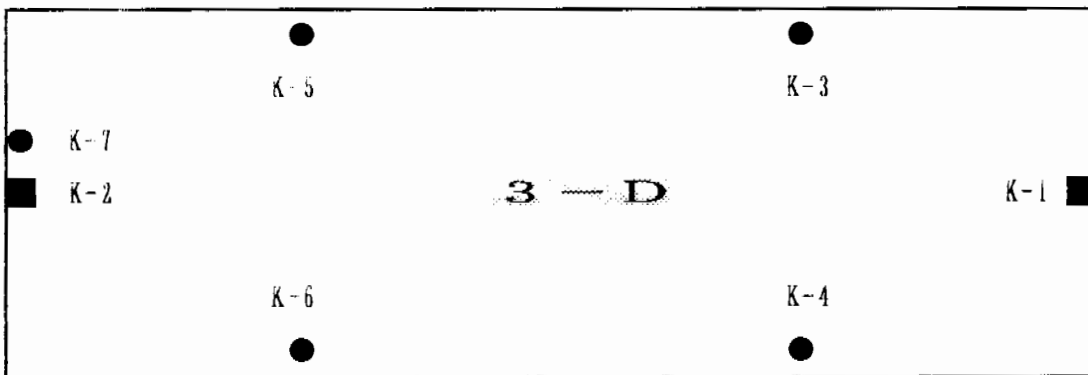
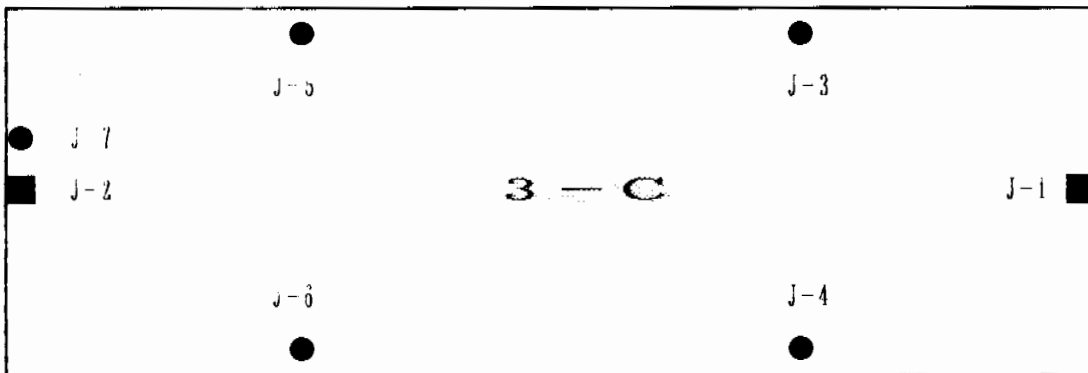
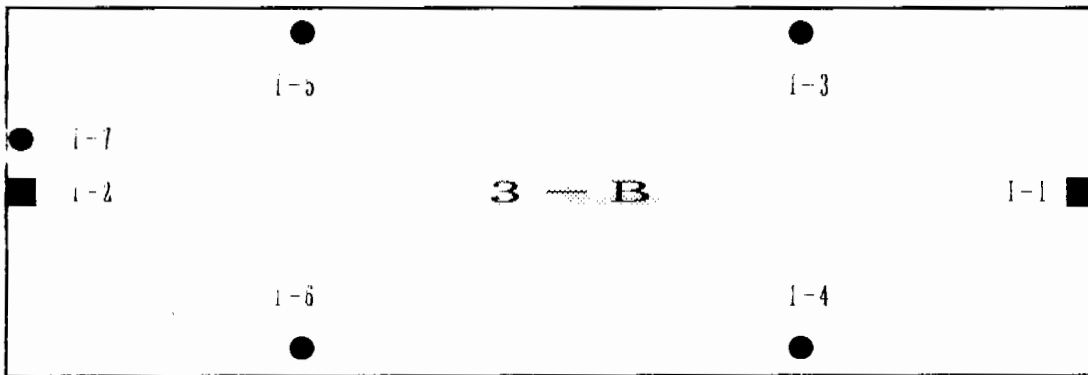
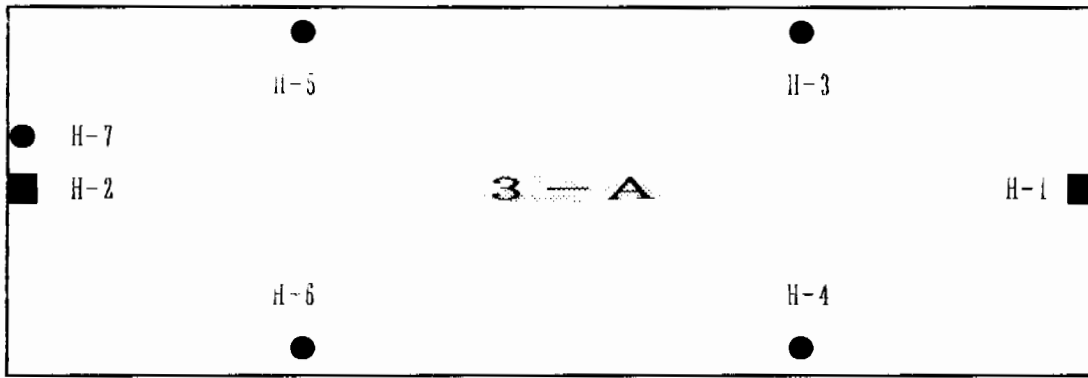
U S D A S E N S O R C H A R T



● SHOWS NON-FIXED SENSOR.
■ SHOWS FIXED SENSOR.

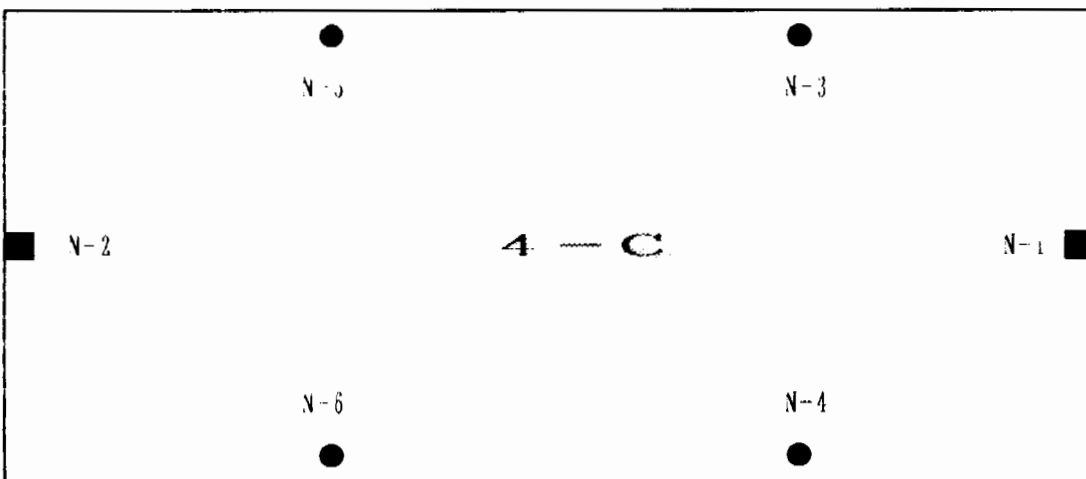
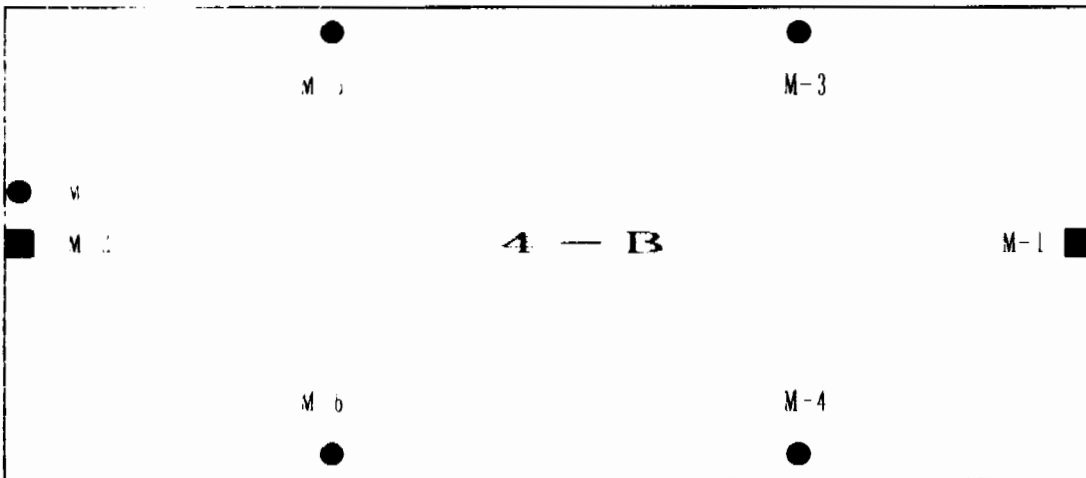
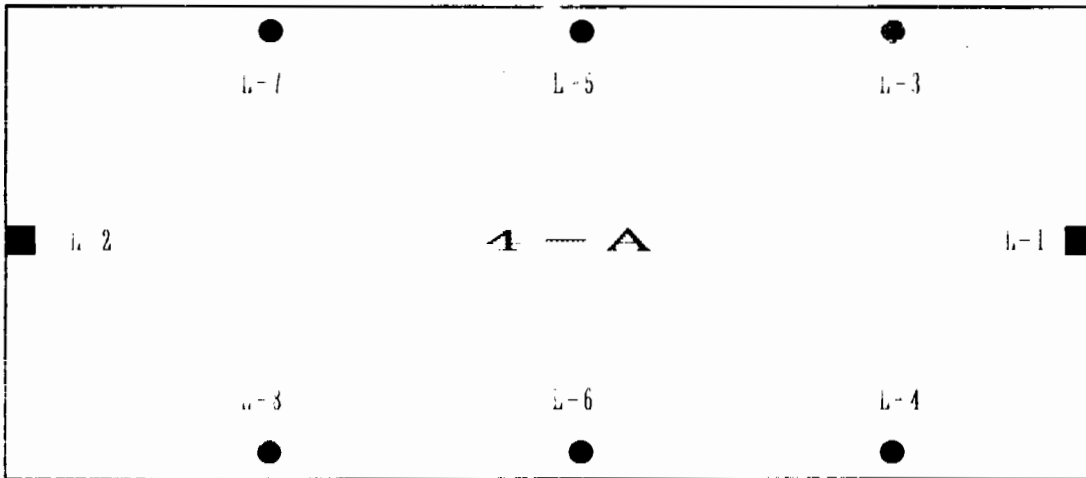


● SHOWS NON-FIXED SENSOR.
 ■ SHOWS FIXED SENSOR.



● SHOWS NON-FIXED SENSOR.
■ SHOWS FIXED SENSOR.

U. S. D. A. SENSOR CHART



● SHOWS NON-FIXED SENSOR.
■ SHOWS FIXED SENSOR.

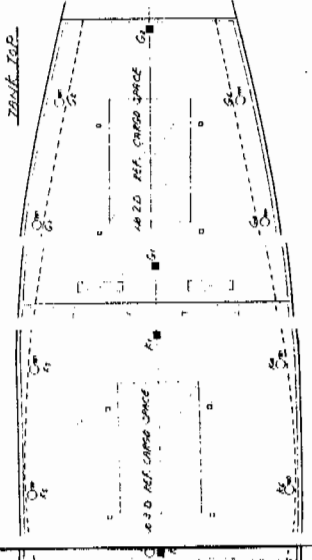
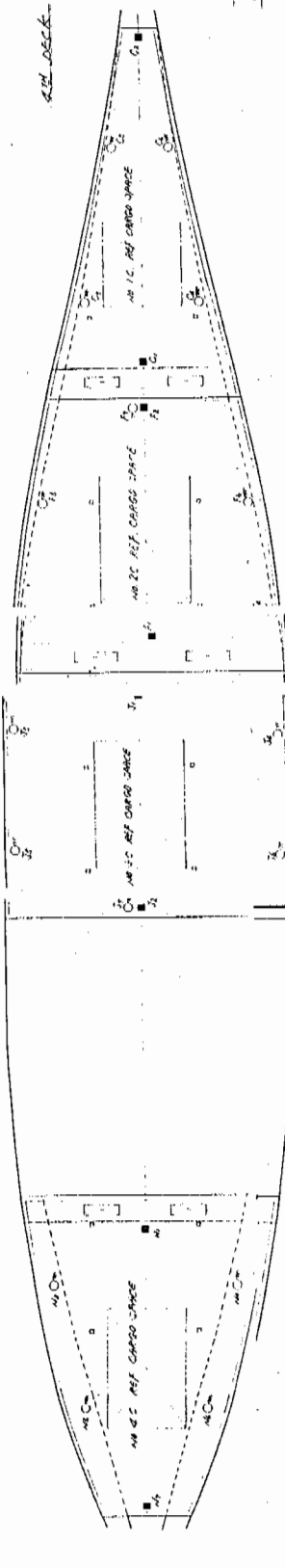
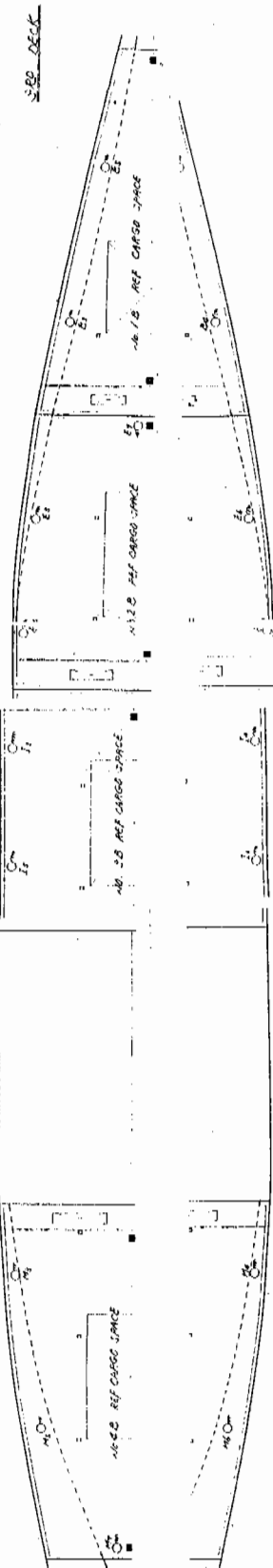
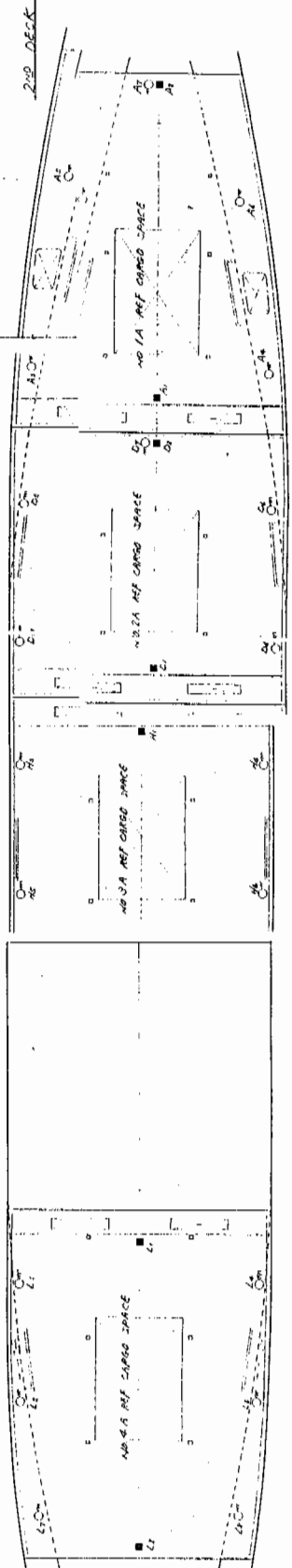
M/V ROYAL REEFAR

DESIGN DEPARTMENT: MESSRS. KURUSHIMA DOCK YARD CO. LTD.
 NIPPON SABBAGE CO., LTD.
 DATE DRAWN: 1954.11.11
 SCALE: 1/100
 DRAWER: [Signature]
 CHECKER: [Signature]
 SECT. CHIEF: [Signature]
 DEP. CHIEF: [Signature]
 ARRANGEMENT of DECKTOP
 CAP. 1,500 TON
 CODE NO. 1000000
 DRAWING NO. 1000000
 SHEET NO. 1/1

NO. 1 A REF. CARGO SPACE	NO. 2 A REF. CARGO SPACE	NO. 3 A REF. CARGO SPACE
NO. 1 B REF. CARGO SPACE	NO. 2 B REF. CARGO SPACE	NO. 3 B REF. CARGO SPACE
NO. 1 C REF. CARGO SPACE	NO. 2 C REF. CARGO SPACE	NO. 3 C REF. CARGO SPACE

NO. 1 A REF. CARGO SPACE	NO. 2 A REF. CARGO SPACE	NO. 3 A REF. CARGO SPACE
NO. 1 B REF. CARGO SPACE	NO. 2 B REF. CARGO SPACE	NO. 3 B REF. CARGO SPACE
NO. 1 C REF. CARGO SPACE	NO. 2 C REF. CARGO SPACE	NO. 3 C REF. CARGO SPACE

NO. 1 A REF. CARGO SPACE	NO. 2 A REF. CARGO SPACE	NO. 3 A REF. CARGO SPACE
NO. 1 B REF. CARGO SPACE	NO. 2 B REF. CARGO SPACE	NO. 3 B REF. CARGO SPACE
NO. 1 C REF. CARGO SPACE	NO. 2 C REF. CARGO SPACE	NO. 3 C REF. CARGO SPACE



■ STAINLESS STEEL
 ○ WOOD