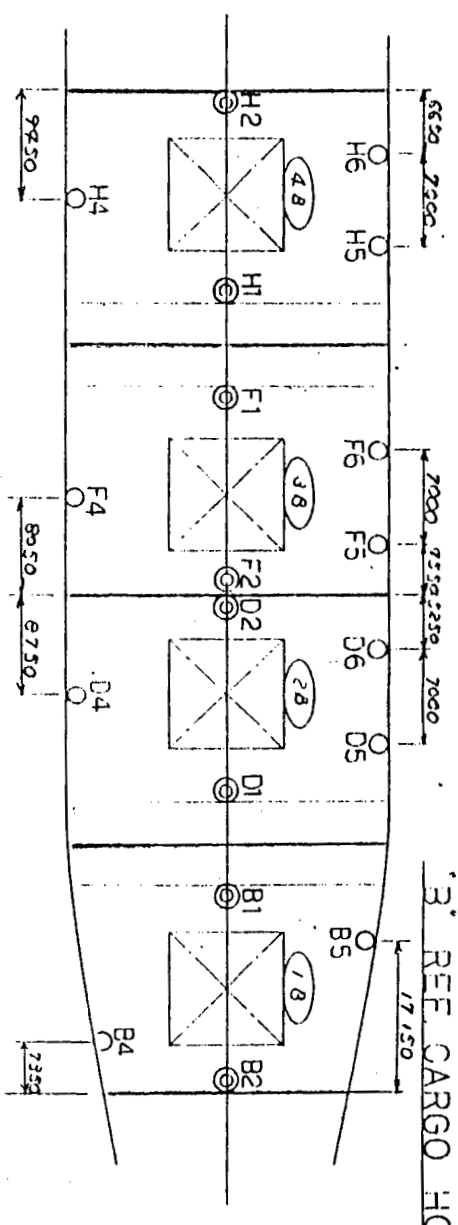
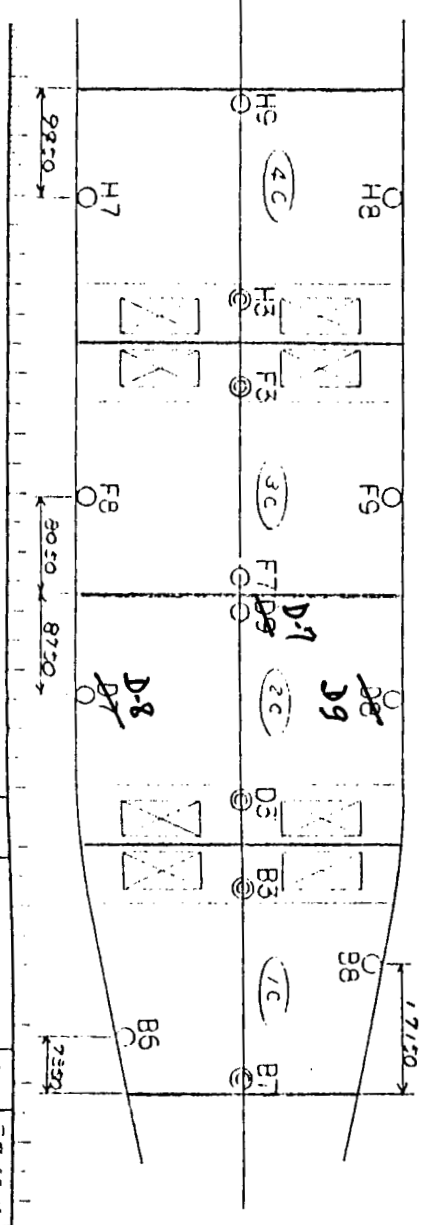


'A' REF CARGO HOLD



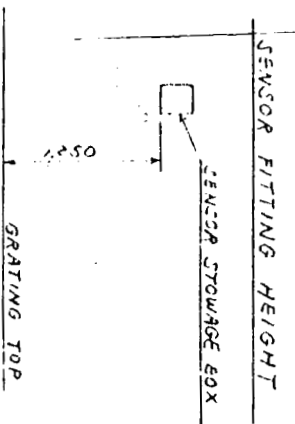
'3' REF CARGO HOLD



'C' REF CARGO HOLD

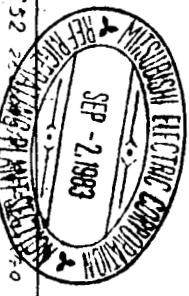
- NOTE:-
1. (C) MARKS : FIXED SENSOR
 2. (O) MARKS : NON FIXED SENSOR
 3. EXCEPT OTHERWISE SPECIFIED, BOTH TYPES ARE SYMMETRICAL.

(1A)	(1B)	(1C)	(1D)	(1E)	(1F)	(1G)	(1H)	(1I)	(1J)	(1K)	(1L)	(1M)	(1N)	(1O)	(1P)	(1Q)	(1R)	(1S)	(1T)	(1U)	(1V)	(1W)	(1X)	(1Y)	(1Z)
(2A)	(2B)	(2C)	(2D)	(2E)	(2F)	(2G)	(2H)	(2I)	(2J)	(2K)	(2L)	(2M)	(2N)	(2O)	(2P)	(2Q)	(2R)	(2S)	(2T)	(2U)	(2V)	(2W)	(2X)	(2Y)	(2Z)
(3A)	(3B)	(3C)	(3D)	(3E)	(3F)	(3G)	(3H)	(3I)	(3J)	(3K)	(3L)	(3M)	(3N)	(3O)	(3P)	(3Q)	(3R)	(3S)	(3T)	(3U)	(3V)	(3W)	(3X)	(3Y)	(3Z)



常用	3角正投影	130° ANGLE	IN	SCALE	DATE
保留			mm	(1:1)	'82. 7. 5

MITSUBISHI ELECTRIC CORPORATION



ARRANGEMENT OF SENSOR FOR TEMP. RECORDER (USDA)