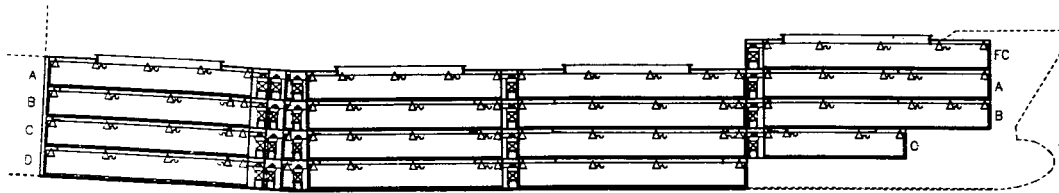
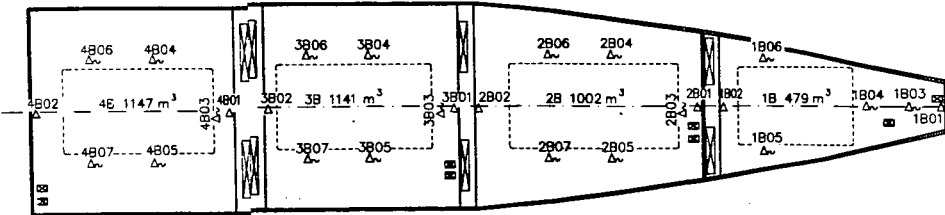
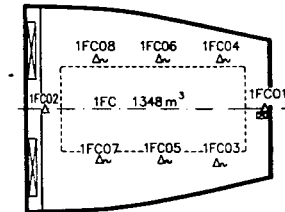
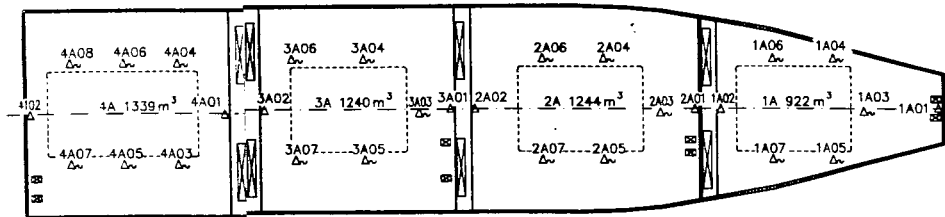


POLARLIGHT  
Hull No. 889



The number of temperature sensors are based upon the cubic capacity of the compartment, according to USDA rules section IV Part 4. Revised 8/95.

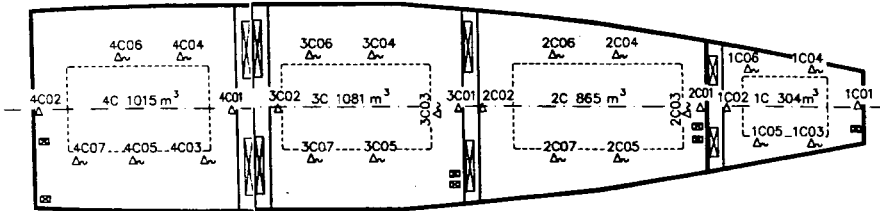
Cubic capacities		
Cubic feet	Cubic meters	No. of sensors
0 - 10,000	0 - 283	4
10,001 - 15,000	284 - 425	5
15,001 - 25,000	426 - 708	6
25,001 - 45,000	709 - 1,274	7
45,001 - 70,000	1,275 - 1,980	8
70,001 - 100,000	1,981 - 2,830	10



Air sensors (fixed)

Shall be located on the centerline on the vessel, approximately 30 centimeters from the ceiling.

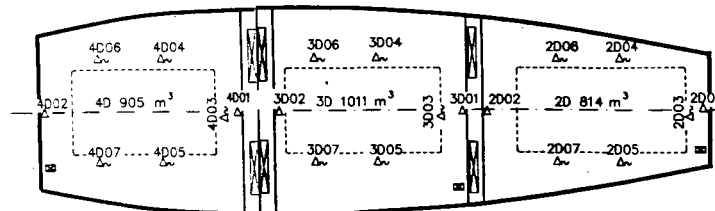
Shall be attached in such a way that they don't touch the bulkhead and are protect from damage caused by the cargo.



Fruit sensors (portable)

Shall be distributed through out the compartment so that all areas of the compartment can be reached.

Shall be stowed in recessed boxes to be protected from damage when not in use.



SYMBOL	QUANTITY	DESCRIPTION
△	32	USDA AIR SENSOR, FIXED
△~	80	USDA FRUIT SENSOR, PORTABLE