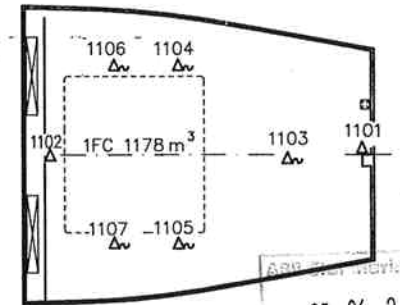
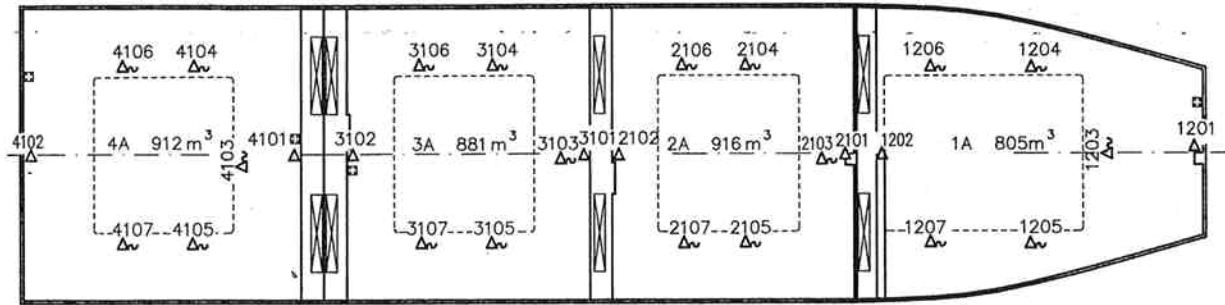
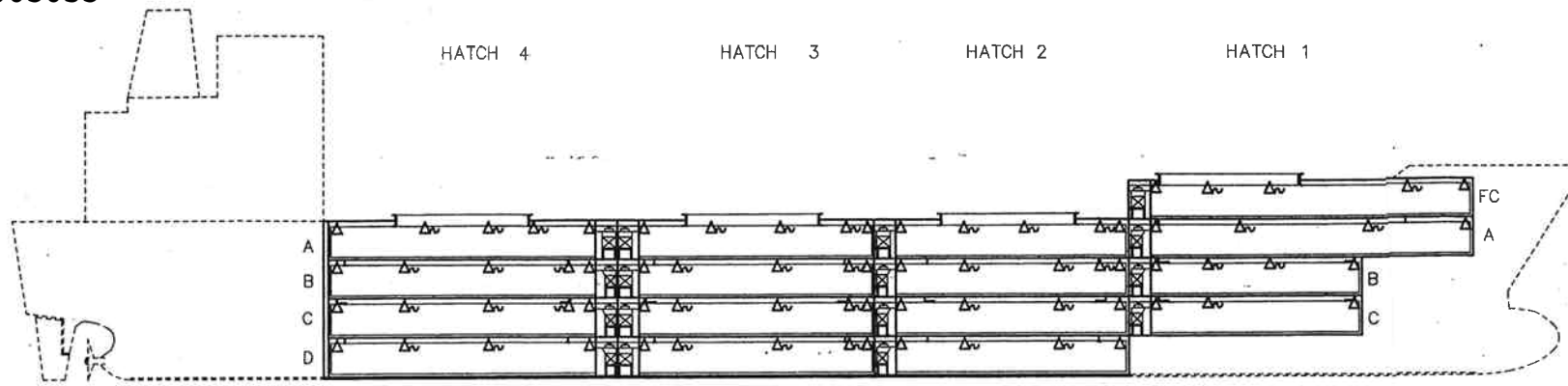
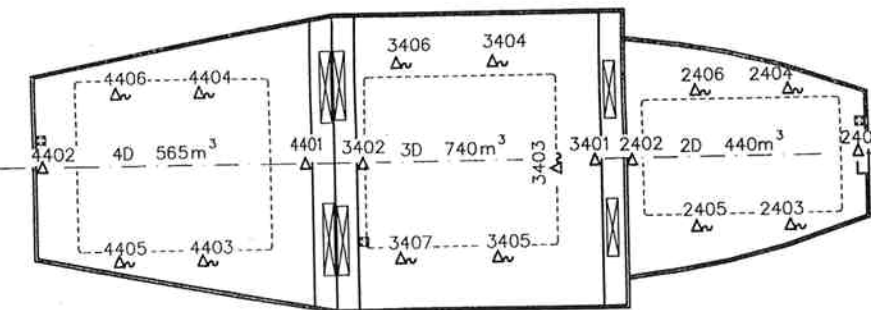
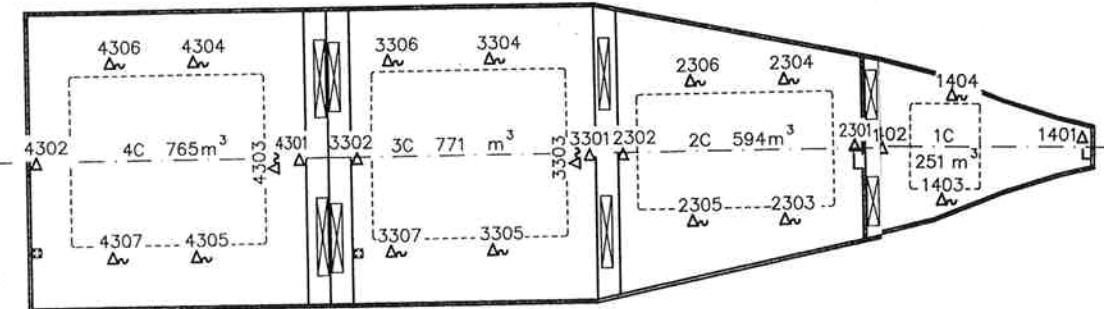
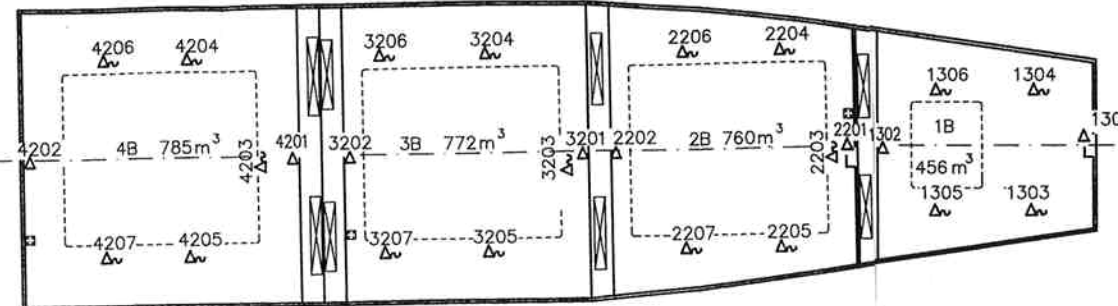


UNAUTHORIZEDLY USED. ALL DATA SUBJECT TO CHANGE WITHOUT NOTICE. STAL MARINE AB

THIS DOCUMENT MUST NOT BE COPIED WITHOUT OUR CONSENT, NOR MUST BE MADE KNOWN TO OTHERS OR OTHERWISE



95-06-26
FOR APPROVAL



TRANSLATION TABLE CARGO HOLDS	
YARD	STAL
1/0	1FC
1/1	1A
1/2	1B
1/3	1C
2/1	2A
2/2	2B
2/3	2C
2/4	2D
3/1	3A
3/2	3B
3/3	3C
3/4	3D
4/1	4A
4/2	4B
4/3	4C
4/4	4D

AIR SENSORS (FIXED)

SHALL BE LOCATED ON THE CENTERLINE OF THE VESSEL, APPROXIMATELY 30 CENTIMETERS FROM THE CEILING.

SHALL BE ATTACHED IN SUCH A WAY THAT THEY DON'T TOUCH THE BULKHEAD AND ARE PROTECTED FROM DAMAGE CAUSED BY THE CARGO.

FRUIT SENSORS (PORTABLE)

SHALL BE STOWED IN RECESSED BOXES TO BE PROTECTED FROM DAMAGE WHEN NOT IN USE.

PROPOSAL OF BOXES FOR USDA FRUIT SENSORS, SEE DRAWING F-22731.

SYMBOL	QUANTITY	DESCRIPTION
△	32	USDA AIR SENSOR, FIXED
△	73	USDA FRUIT SENSOR, PORTABLE

New building 508/31-32 at STOCZNIA GDANSKA S.A.
11591 m³ REEFER VESSEL

UNITED STATES DEPARTMENT OF AGRICULTURE
Animal and Plant Health Inspection
Plant Protection and Quarantine
APPROVED
Peter Wilhelm 6/29/95

ARKIV: E:\MLORDER\95442001
FIL: E:\MLORDER\95442001\14A.DWG
DATUM: 95.05.30 16:38

A2	Inført ändringskede Alternation No.	Ritad Drawn	PT/ GBE	Kontrollerad Checked	Godkänd Approved	Arkivnummer Archive No.	DF	UGF
		95.05.30					<input type="checkbox"/>	<input type="checkbox"/>
ABB Stal Marine		LOCATION OF USDA TEMPERATURE SENSORS IN CARGO SPACE				Ark nr Sheet No.	Ant. ark Tot.No.of sh.	
						95442001-14A		

Bet. ARK.No	Ändring Alteration	Dat. Date	Sign.