

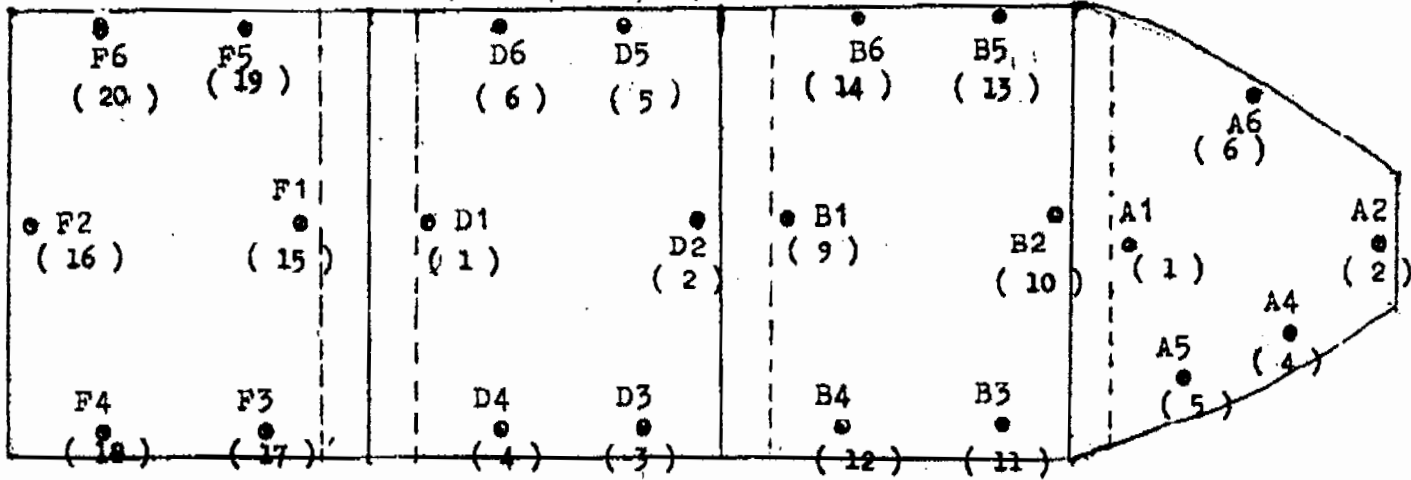
SENSOR ARRANGEMENT FOR U.S.D.A M.V OHYOH

NO.4 A CARGO HOLD

NO.3 A CARGO HOLD

NO.2 A CARGO HOLD

NO.1 A CARGO HOLD

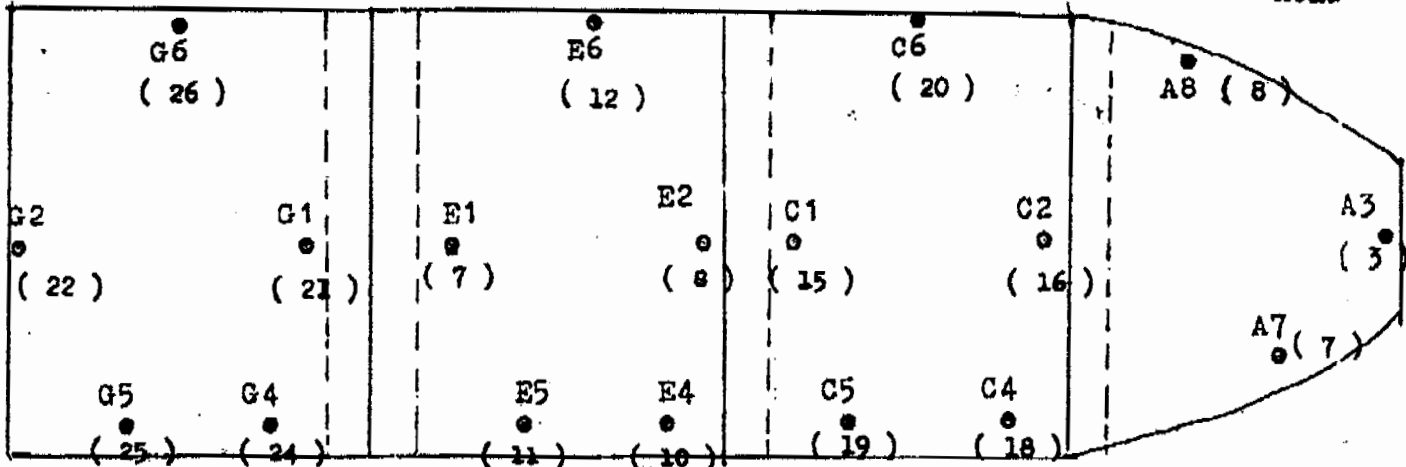


NO.4 B CARGO HOLD

NO.3 B CARGO HOLD

NO.2 B CARGO HOLD

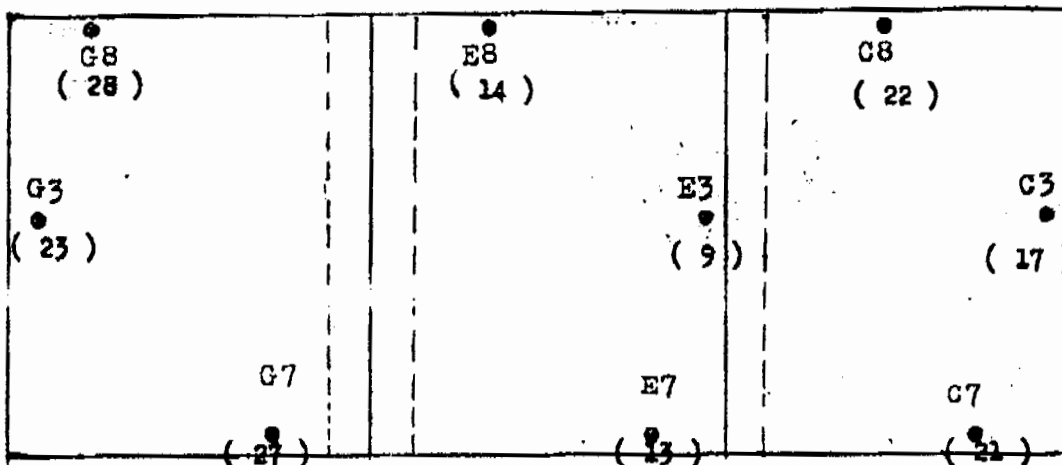
NO.1 B CARGO HOLD



NO.4 C CARGO HOLD

NO.3C CARGO HOLD

NO.2 C CARGO HOLD



○ --- FIXED SENSOR  
 ● --- NON-FIXED SENSOR