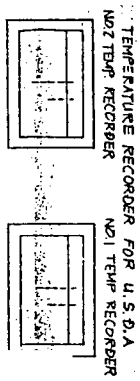
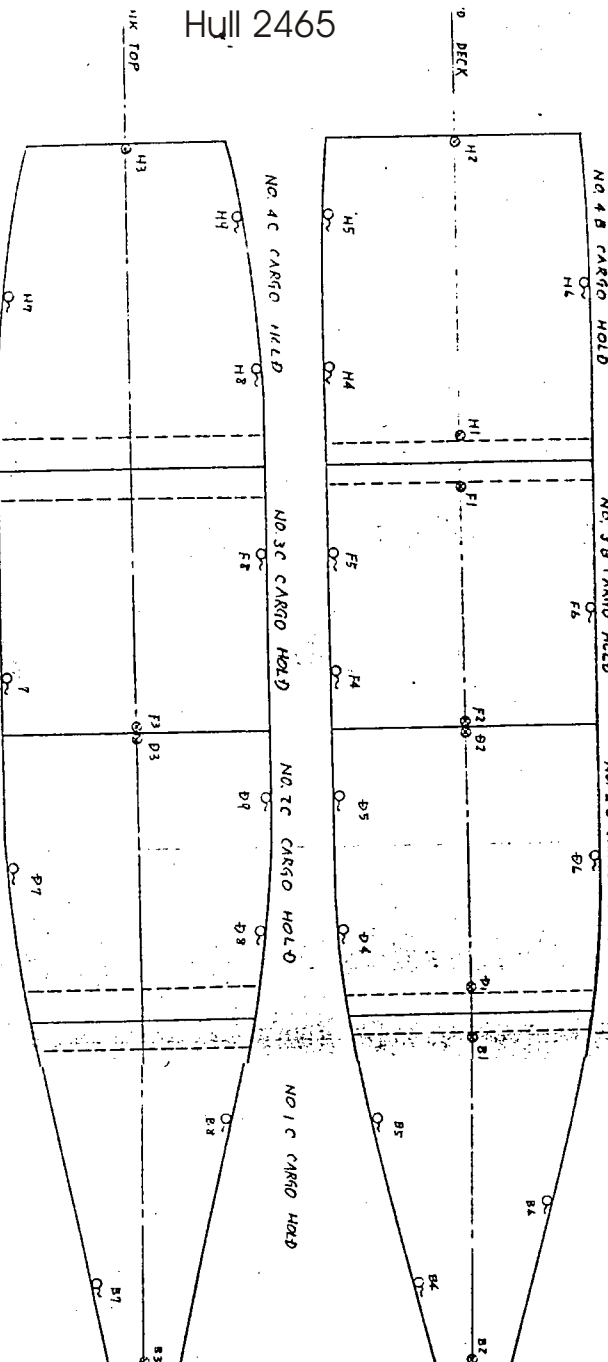
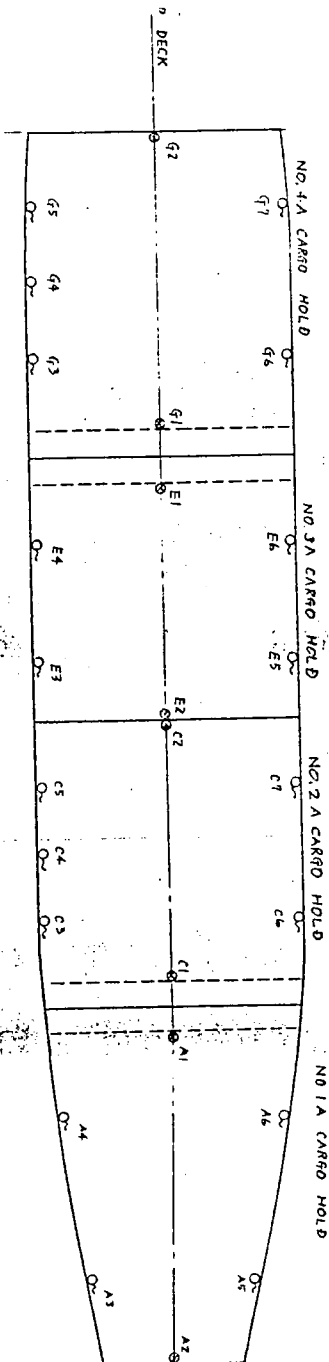
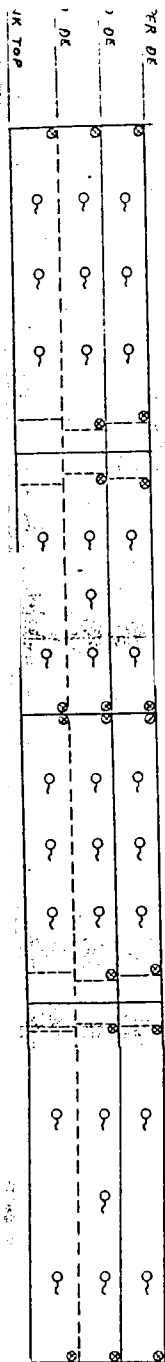


NOVA CALEDONIA  
Hull 2465



PRINTING MARK

- ⊗ E1-E6
- ⊗ F1-F7
- ⊗ G1-G7
- ⊗ H1-H9
- A1-A6
- B1-B8
- C1-C7
- D1-D9

⊗-----FIXED SENSOR  
WITH LEAD CABLE OF 5 METERS

○-----NON-FIXED SENSOR  
WITH LEAD CABLE OF 15 METERS

Size of Vessel	NOVA CALEDONIA	Deck	NO. 1 DECK
Registered & Hull No.	2465	Deck	NO. 2 DECK
Owner	KURUMATA DOCKYARD CO., LTD.	Deck	NO. 3 DECK
Operator/Agent	DAI NIPPON STEAMSHIP CO.	Deck	NO. 4 DECK
Total Berth Capacity	740	Deck	NO. 5 DECK
Instr. Type & Make	Yokohama Shipyard	Deck	NO. 6 DECK
Completion	1965	Deck	NO. 7 DECK
1A	810	Deck	NO. 8 DECK
2A	330	Deck	NO. 9 DECK
3A	710	Deck	NO. 10 DECK
4A	170	Deck	NO. 11 DECK
5A	170	Deck	NO. 12 DECK
6A	170	Deck	NO. 13 DECK
7A	170	Deck	NO. 14 DECK
8A	170	Deck	NO. 15 DECK
9A	170	Deck	NO. 16 DECK
10A	170	Deck	NO. 17 DECK
11A	170	Deck	NO. 18 DECK
12A	170	Deck	NO. 19 DECK
13A	170	Deck	NO. 20 DECK
14A	170	Deck	NO. 21 DECK
15A	170	Deck	NO. 22 DECK
16A	170	Deck	NO. 23 DECK
17A	170	Deck	NO. 24 DECK
18A	170	Deck	NO. 25 DECK
19A	170	Deck	NO. 26 DECK
20A	170	Deck	NO. 27 DECK
21A	170	Deck	NO. 28 DECK
22A	170	Deck	NO. 29 DECK
23A	170	Deck	NO. 30 DECK
24A	170	Deck	NO. 31 DECK
25A	170	Deck	NO. 32 DECK
26A	170	Deck	NO. 33 DECK
27A	170	Deck	NO. 34 DECK
28A	170	Deck	NO. 35 DECK
29A	170	Deck	NO. 36 DECK
30A	170	Deck	NO. 37 DECK
31A	170	Deck	NO. 38 DECK
32A	170	Deck	NO. 39 DECK
33A	170	Deck	NO. 40 DECK
34A	170	Deck	NO. 41 DECK
35A	170	Deck	NO. 42 DECK
36A	170	Deck	NO. 43 DECK
37A	170	Deck	NO. 44 DECK
38A	170	Deck	NO. 45 DECK
39A	170	Deck	NO. 46 DECK
40A	170	Deck	NO. 47 DECK
41A	170	Deck	NO. 48 DECK
42A	170	Deck	NO. 49 DECK
43A	170	Deck	NO. 50 DECK
44A	170	Deck	NO. 51 DECK
45A	170	Deck	NO. 52 DECK
46A	170	Deck	NO. 53 DECK
47A	170	Deck	NO. 54 DECK
48A	170	Deck	NO. 55 DECK
49A	170	Deck	NO. 56 DECK
50A	170	Deck	NO. 57 DECK
51A	170	Deck	NO. 58 DECK
52A	170	Deck	NO. 59 DECK
53A	170	Deck	NO. 60 DECK
54A	170	Deck	NO. 61 DECK
55A	170	Deck	NO. 62 DECK
56A	170	Deck	NO. 63 DECK
57A	170	Deck	NO. 64 DECK
58A	170	Deck	NO. 65 DECK
59A	170	Deck	NO. 66 DECK
60A	170	Deck	NO. 67 DECK
61A	170	Deck	NO. 68 DECK
62A	170	Deck	NO. 69 DECK
63A	170	Deck	NO. 70 DECK
64A	170	Deck	NO. 71 DECK
65A	170	Deck	NO. 72 DECK
66A	170	Deck	NO. 73 DECK
67A	170	Deck	NO. 74 DECK
68A	170	Deck	NO. 75 DECK
69A	170	Deck	NO. 76 DECK
70A	170	Deck	NO. 77 DECK
71A	170	Deck	NO. 78 DECK
72A	170	Deck	NO. 79 DECK
73A	170	Deck	NO. 80 DECK
74A	170	Deck	NO. 81 DECK
75A	170	Deck	NO. 82 DECK
76A	170	Deck	NO. 83 DECK
77A	170	Deck	NO. 84 DECK
78A	170	Deck	NO. 85 DECK
79A	170	Deck	NO. 86 DECK
80A	170	Deck	NO. 87 DECK
81A	170	Deck	NO. 88 DECK
82A	170	Deck	NO. 89 DECK
83A	170	Deck	NO. 90 DECK
84A	170	Deck	NO. 91 DECK
85A	170	Deck	NO. 92 DECK
86A	170	Deck	NO. 93 DECK
87A	170	Deck	NO. 94 DECK
88A	170	Deck	NO. 95 DECK
89A	170	Deck	NO. 96 DECK
90A	170	Deck	NO. 97 DECK
91A	170	Deck	NO. 98 DECK
92A	170	Deck	NO. 99 DECK
93A	170	Deck	NO. 100 DECK

MESSRS. KURUMATA DOCKYARD CO., LTD.  
FOR S.No. 2465 2466 2467. 2468  
DRAWING OF SENSOR ARRANGEMENT FOR U.S.D.A. REPOK

SCALE	1/5	DRAWING NO.	E 5510-68
DATE	DESIGNED BY	CHECKED	APPROVED
DRAWING OF SENSOR ARRANGEMENT FOR U.S.D.A. REPOK			
MATERAWA MARINE ENGINEERING CO., LTD.			
TOKYO JAPAN			