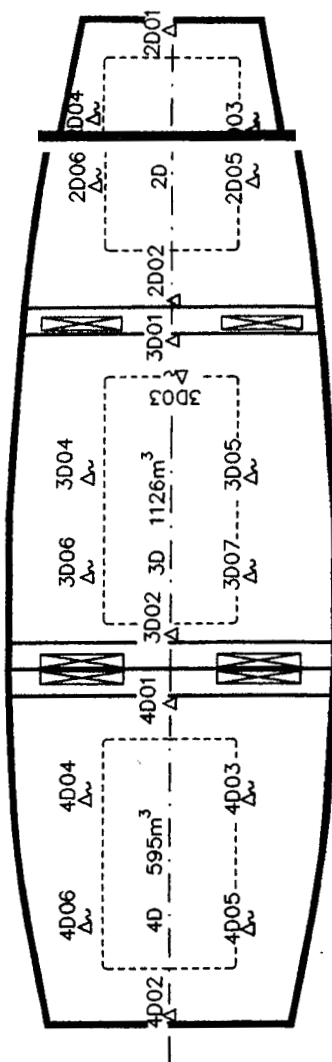
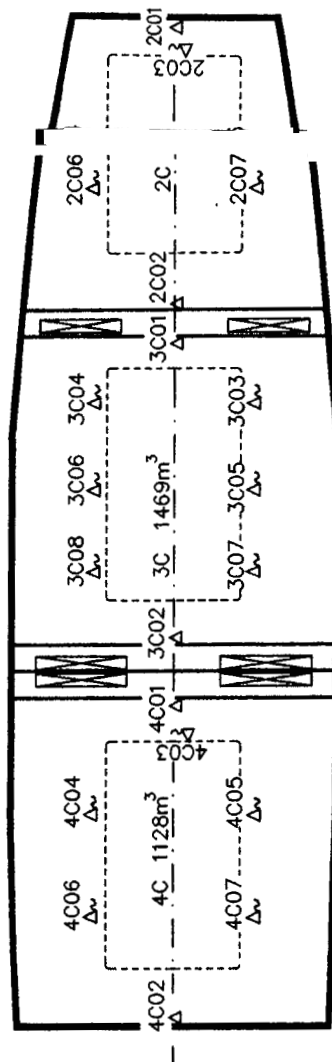
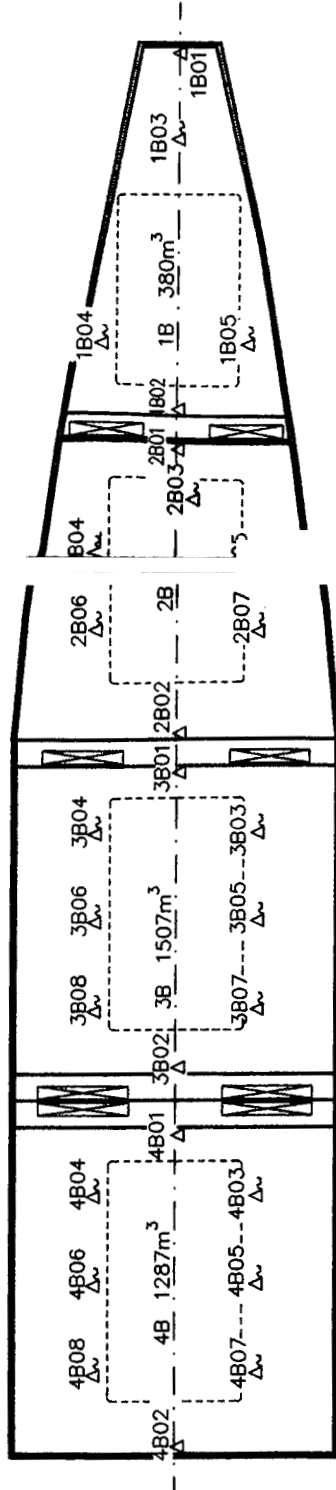
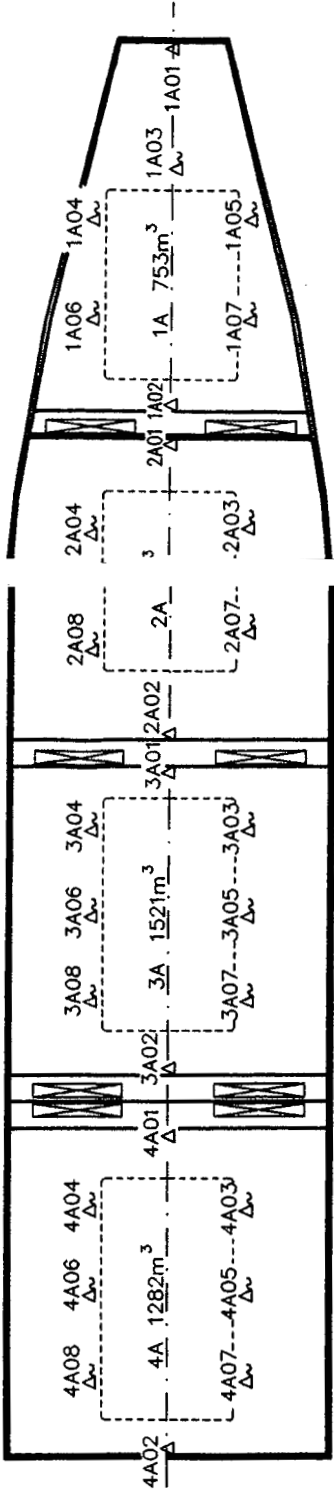
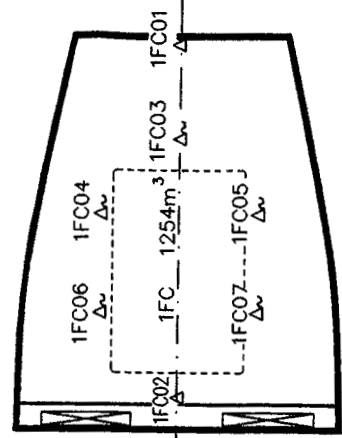
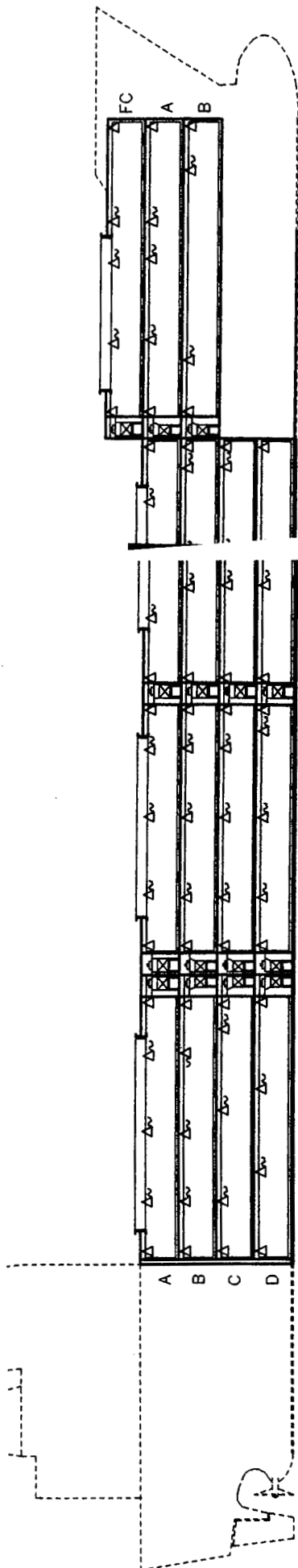


LUZON STRAIT Hull No. 730

Cubic capacities		
Cubic feet	Cubic meters	No. of sensors
0	0	4
10,001	284	5
15,001	426	6
25,001	709	7
45,001	1,275	8
70,001	1,981	10



Air sensors (fixed)

Shall be located on the centerline on the vessel, approximately 30 centimeters from the ceiling.

Shall be attached in such a way that they don't touch the bulkhead and are protected from damage caused by the cargo.

Fruit sensors (portable)

Shall be distributed throughout the compartment so that all areas of the compartment can be reached.

Shall be stowed in recessed boxes to be protected from damage when not in use.

Symbol	Quantity	Description	Drwg No.	Cable length
△	30	USDA air sensor, fixed	99442001-195	5 m
△	77	USDA fruit sensor, portable	99442001-195	15 m

16567 m³ reefer vessel

Project	CSBC HNO 729/730			Sheet No.	Tot.No.of sh.
Drawn	FC/TS	Checked	Approved	Template No.	Part list
Date	99.06.10			53170170-32	<input type="checkbox"/>
Denomination	LOCATION OF USDA TEMPERATURE SENSORS IN CARGO SPACE			50090541-58	
				Sabroe Marine AE	
				P O Box 667, S-60115 NORRCKÖPING, Sweden	
				Phone +46 11214500	
				Drawing No.	
				99442001-17	
				Rev. No.	
				1	