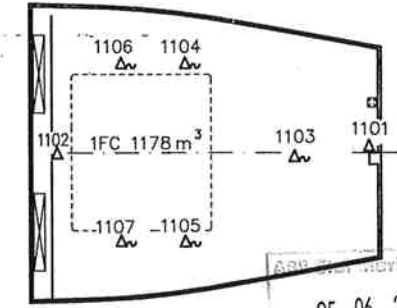
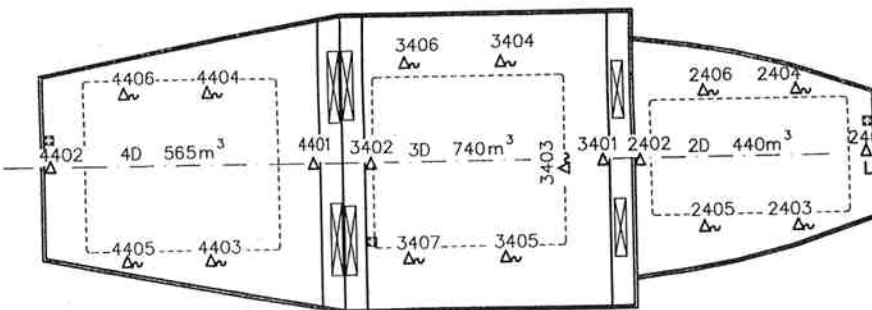
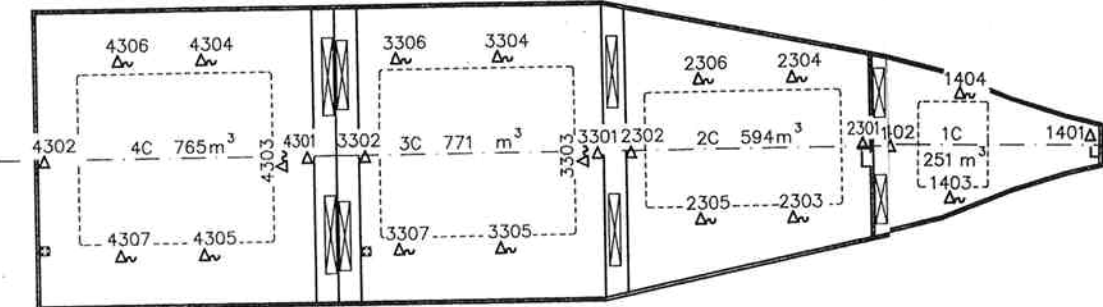
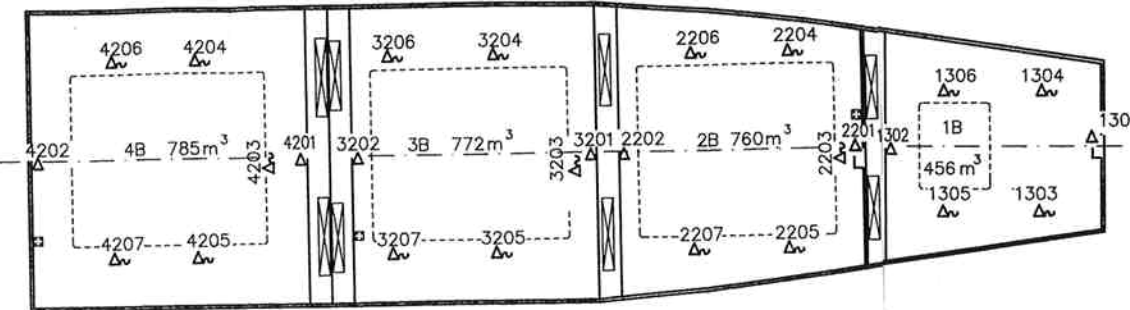
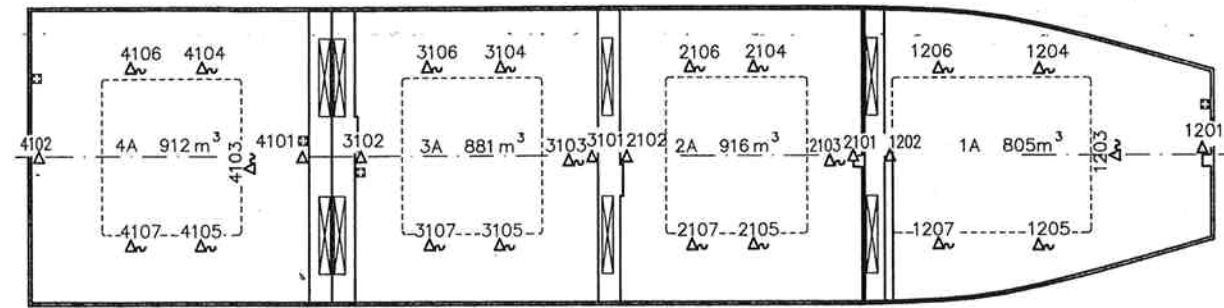
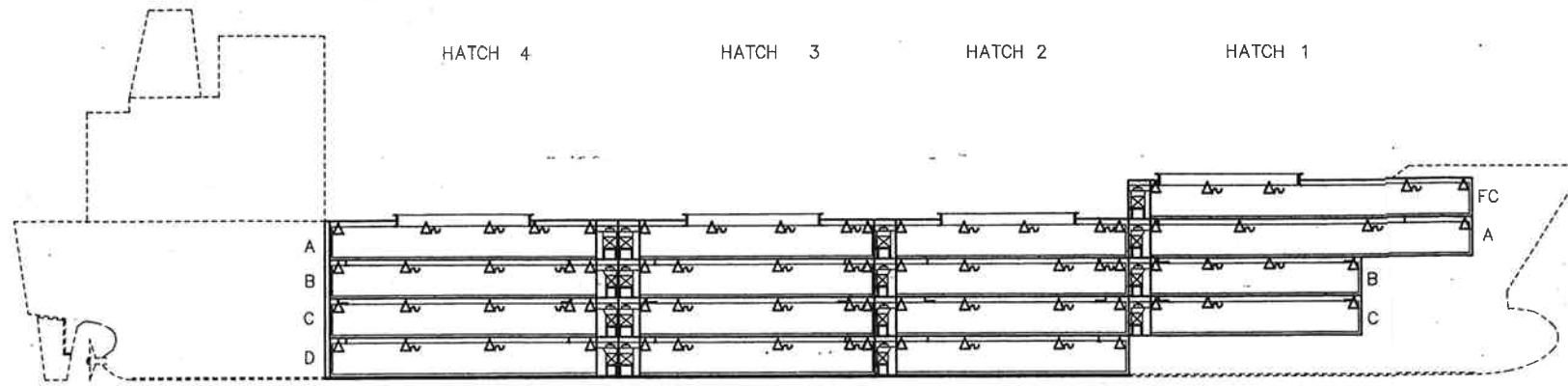


MV Louis Pasteur
 IMO# 9063665
 Hull # B508\32

UNAUTHORIZEDLY USED. ALL DATA SUBJECT TO CHANGE WITHOUT NOTICE. STAL MARINE AB

THIS DOCUMENT MUST NOT BE COPIED WITHOUT OUR CONSENT, NOR MUST BE MADE KNOWN TO OTHERS OR OTHERWISE



Approved Revision 033
 95-06-26
 FOR APPROVAL

TRANSLATION TABLE CARGO HOLDS	
YARD	STAL
1/0	1FC
1/1	1A
1/2	1B
1/3	1C
2/1	2A
2/2	2B
2/3	2C
2/4	2D
3/1	3A
3/2	3B
3/3	3C
3/4	3D
4/1	4A
4/2	4B
4/3	4C
4/4	4D

AIR SENSORS (FIXED)

SHALL BE LOCATED ON THE CENTERLINE OF THE VESSEL, APPROXIMATELY 30 CENTIMETERS FROM THE CEILING.

SHALL BE ATTACHED IN SUCH A WAY THAT THEY DON'T TOUCH THE BULKHEAD AND ARE PROTECTED FROM DAMAGE CAUSED BY THE CARGO.

FRUIT SENSORS (PORTABLE)

SHALL BE STOWED IN RECESSED BOXES TO BE PROTECTED FROM DAMAGE WHEN NOT IN USE.

PROPOSAL OF BOXES FOR USDA FRUIT SENSORS, SEE DRAWING F-22731.

SYMBOL	QUANTITY	DESCRIPTION
△	32	USDA AIR SENSOR, FIXED
△	73	USDA FRUIT SENSOR, PORTABLE

New building 508/31-32 at STOCZNIA GDANSKA S.A.
 11591 m³ REEFER VESSEL

APPROVED
 UNITED STATES DEPARTMENT OF AGRICULTURE
 Animal and Plant Health Inspection Service
 Fruit Protection and Quarantine

Est. No.	Andring	Alteration	Dat.	Sign.

ARKIV: E:\MLORDER\95442001-14A.DWG
 FIL: E:\MLORDER\95442001-14A.DWG
 DATUM: 95.05.30 16:38

A2	Infört ändringsskede Alternation No.	Ritad Drawn	PT/GBE	Kontrollerad Checked	Godkänd Approved	Arkivnummer Archive No.	DF	UGF
			95.05.30				<input type="checkbox"/>	<input type="checkbox"/>
ABB Stal Marine						LOCATION OF USDA TEMPERATURE SENSORS IN CARGO SPACE	Ark nr Sheet No.	Ant. ark Tot.No. of sh.
						95442001-14A		