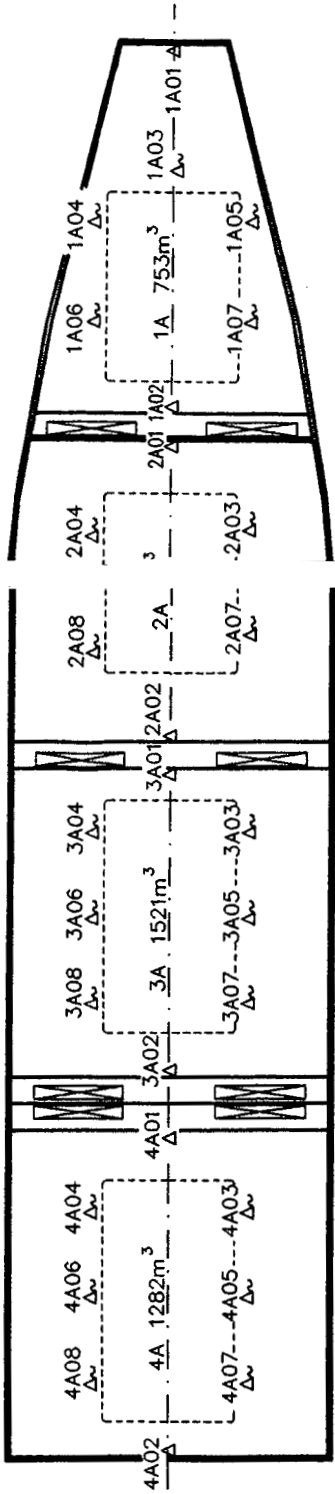


Cubic capacities		
Cubic feet	Cubic meters	No. of sensors
0	0	4
10,000	283	5
15,000	425	6
25,000	708	7
45,000	1,274	8
70,000	1,980	10



Air sensors (fixed)

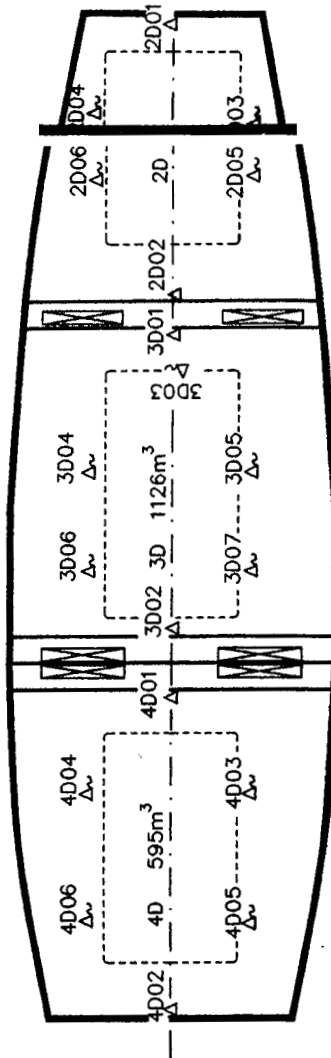
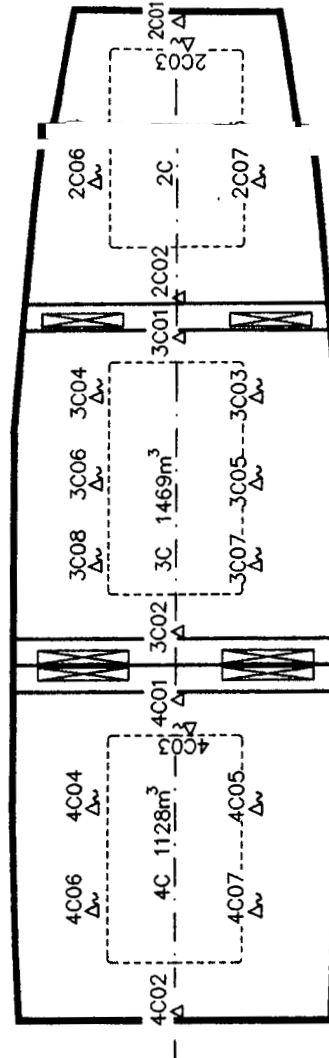
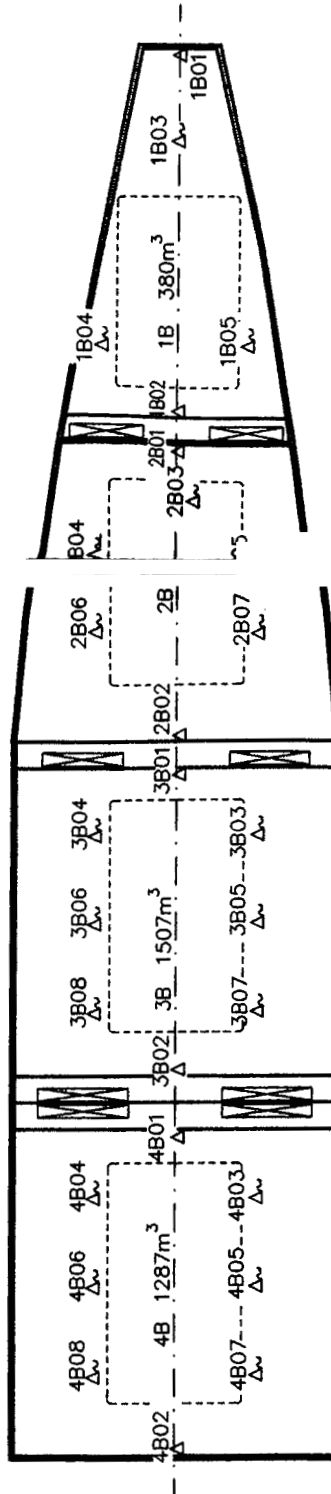
Shall be located on the centerline on the vessel, approximately 30 centimeters from the ceiling.

Shall be attached in such a way that they don't touch the bulkhead and are protected from damage caused by the cargo.

Fruit sensors (portable)

Shall be distributed through out the compartment so that all areas of the compartment can be reached.

Shall be stowed in recessed boxes to be protected from damage when not in use.



Symbol	Quantity	Description	Drwg No.	Cable length
△	30	USDA air sensor, fixed	99442001-195	5 m
△	77	USDA fruit sensor, portable	99442001-195	15 m

16567 m³ reefer vessel

Project	CSBC HNO 729/730			Part list	<input type="checkbox"/>
Drawn	FC/TS	Checked	Approved	Template No.	53170170-32
Date	99.06.10				
Denomination	LOCATION OF USDA TEMPERATURE SENSORS IN CARGO SPACE			Sheet No.	00412001 17
Project	Sabroe Marine AE			Phone	+46 11214500
			P O Box 667, S-60115 NORRBYGPNN Sweden		