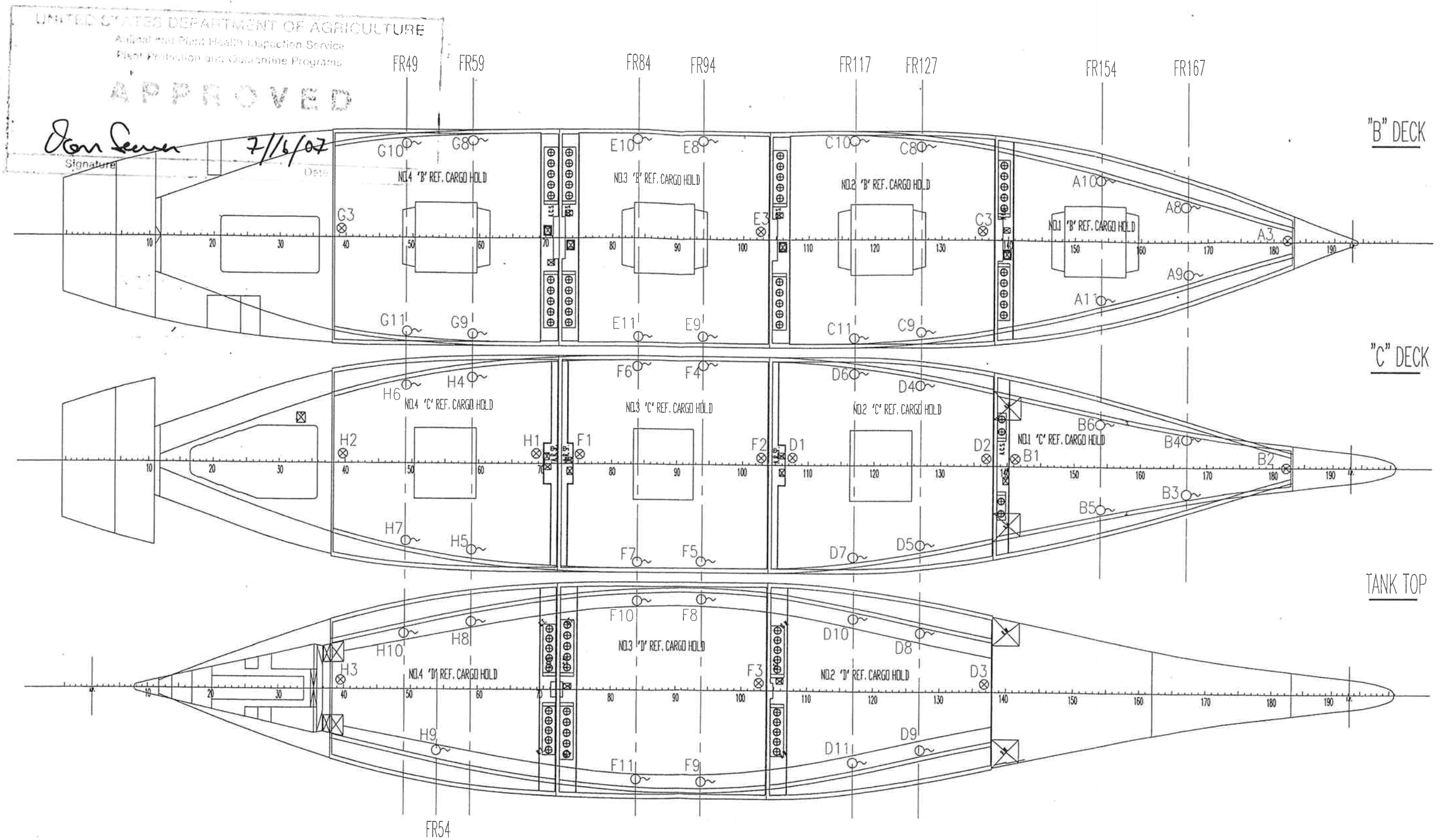


Lady Rose
 IMO # 9355302
 Hull # 373



⊗ FIXED SENSOR WITH LEAD CABLE OF 5 METERS
 ○ NON-FIXED SENSOR WITH LEAD CABLE OF 15 METERS

管理No. X40300

Rev No.	Description	Date	By	Appr.
△				
△				
△				
△				

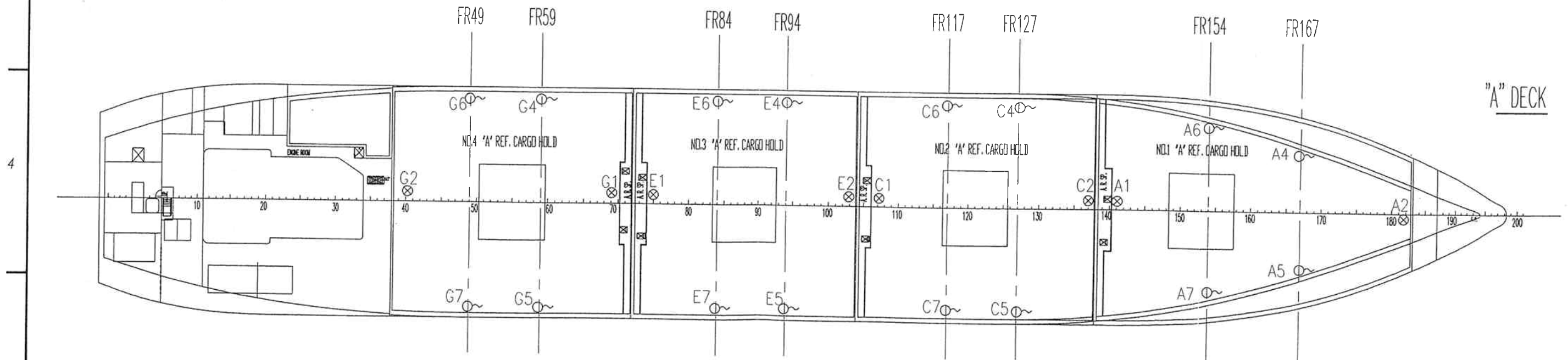
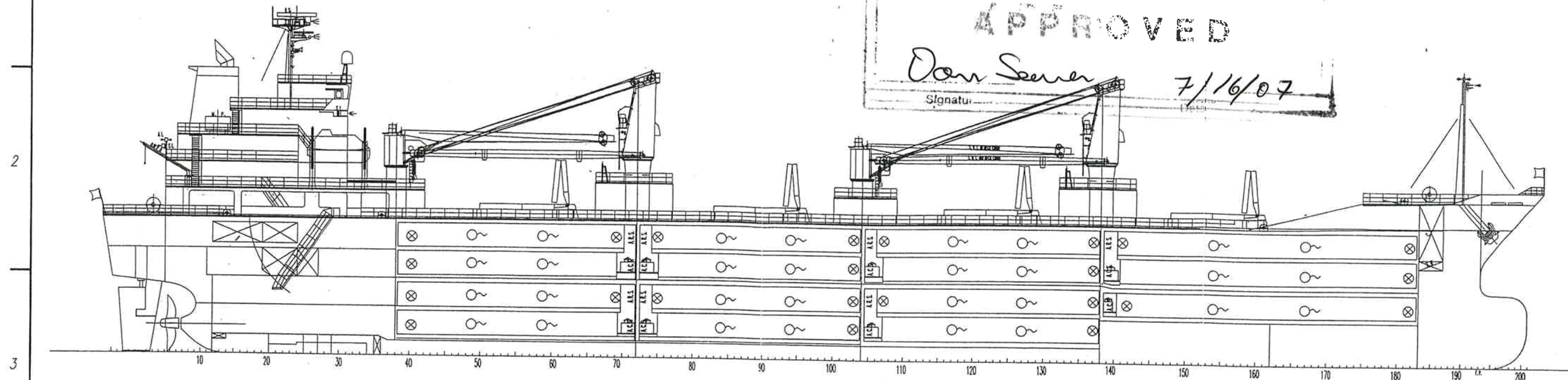
Messrs. KITANIHON SHIP BUILDING CO., LTD SHIP No.373/376	For SENSOR ARRANGEMENT FOR USDA REPORT (2)			
Title SENSOR ARRANGEMENT	Q'ty	Scale 1 / 400	Dwg No. 1200 07-W0200	
MYCOM 株式会社 前川製作所	Designed By	Drawn By	Checked By	Appr. By
	Name KIMOTO	FUKUDA	INOUE	INAGAKI
	Date 10-May-2006	12-May-2006	16-May-2006	17-May-2006

Lady Rose
IMO # 9355032
Hull # 373

UNITED STATES DEPARTMENT OF AGRICULTURE
Animal and Plant Health Inspection Service
Plant Protection and Quarantine Programs

APPROVED

Don Sever
Signature: _____ Date: 7/16/07



管理 No. X40300

⊗ FIXED SENSOR WITH LEAD CABLE OF 5 METERS
○ NON-FIXED SENSOR WITH LEAD CABLE OF 15 METERS

Rev No.	Description	Date	By	Appr.	Messrs. <i>KITANIHON SHIP BUILDING CO., LTD SHIP No. 373/376</i>	For <i>SENSOR ARRANGEMENT FOR USDA REPORT (1)</i>							
					Title <i>SENSOR ARRANGEMENT</i>					Q'ty	Scale <i>1/400</i>	Dwg No. <i>1200 07-W0100</i>	
					MYCOM 株式会社 前川製作所					Designed By	Drawn By	Checked By	Appr. By
										Name <i>KIMOTO</i>	<i>FUKUDA</i>	<i>INOUE</i>	<i>INAGAKI</i>
					Date	<i>10-May-2006</i>	<i>12-May-2006</i>	<i>16-May-2006</i>	<i>17-May-2006</i>				