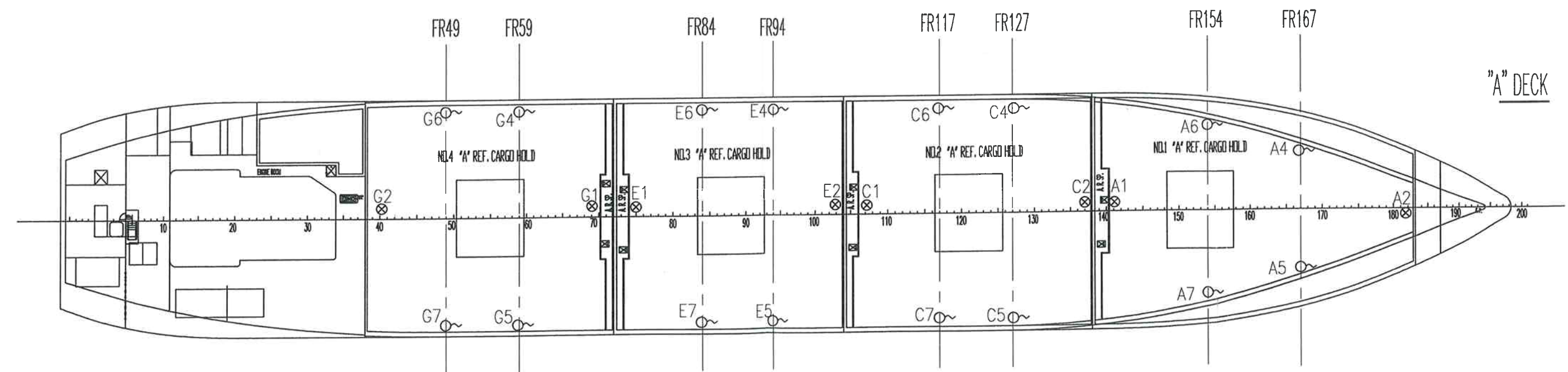
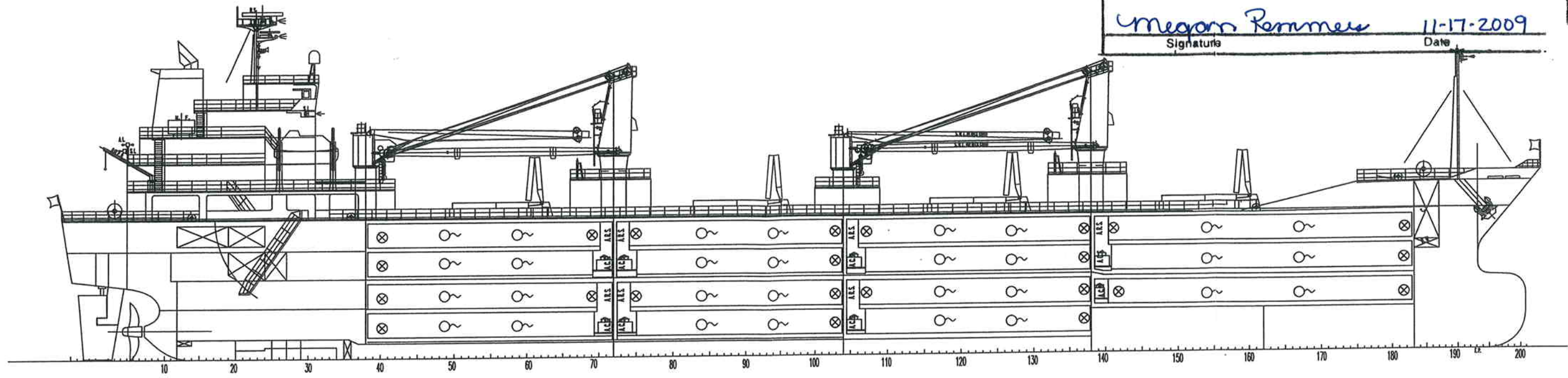


A B C D E F G H J K

UNITED STATES DEPARTMENT OF AGRICULTURE  
 Animal and Plant Health Inspection Service  
 Plant Protection and Quarantine Programs

**APPROVED**

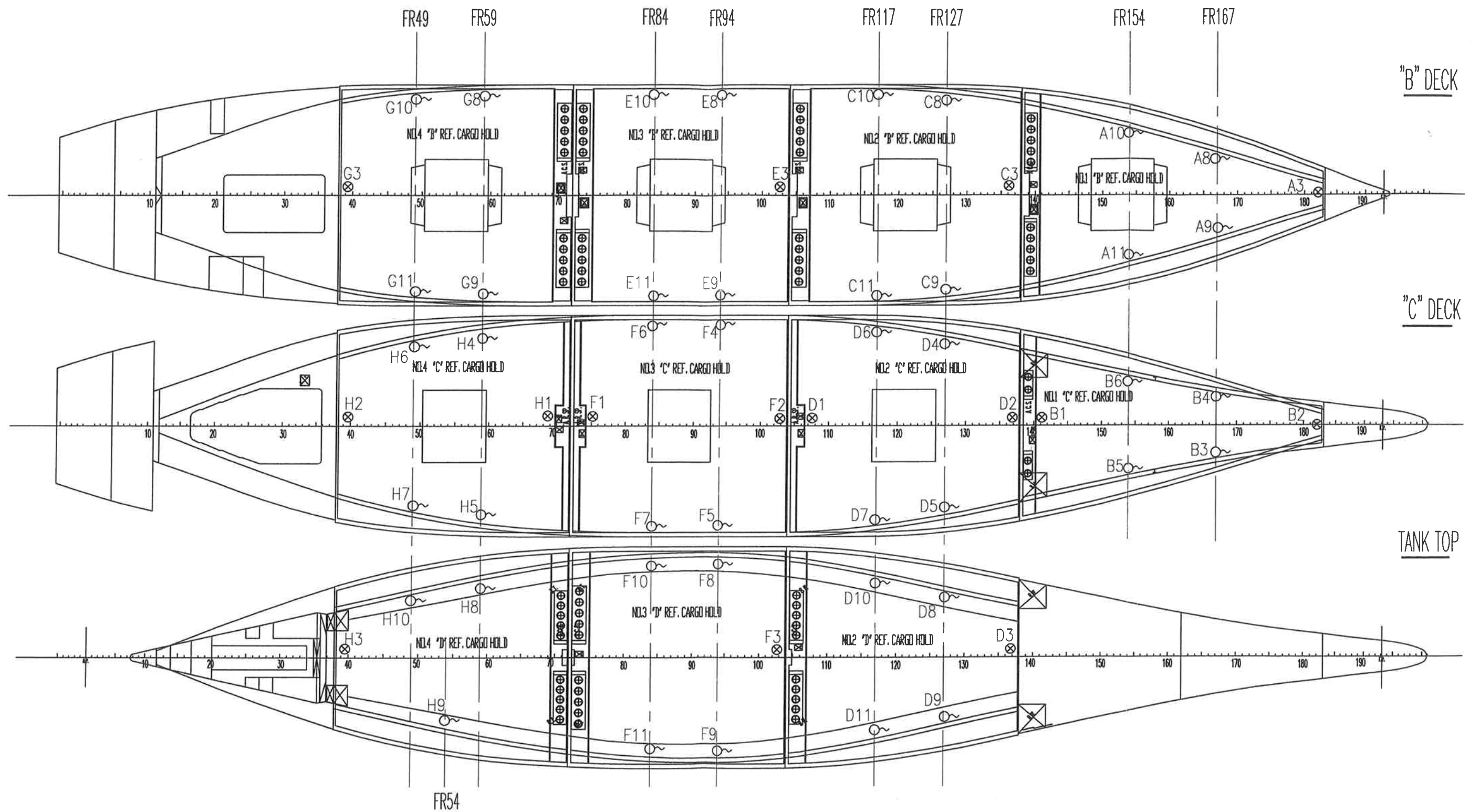
*Megorn Remmes* 11-17-2009  
 Signature Date



⊗ FIXED SENSOR WITH LEAD CABLE OF 5 METERS  
 ○ NON-FIXED SENSOR WITH LEAD CABLE OF 15 METERS

▲ ▲ ▲ ▲	Rev No.	Description	Date	By	Appr.	Messrs. <i>KITANIHON SHIP BUILDING CO., LTD. SHIP No.507/508</i>	For <i>SENSOR ARRANGEMENT FOR USDA REPORT (1)</i>				
	Title <i>SENSOR ARRANGEMENT</i>						Q'ty	Scale <i>1/400</i>	Dwg No. <i>0736 07-W0100</i>		
	株式会社 前川製作所						Designed By	Drawn By	Checked By	Appr. By	
							Name	<i>WATANABE KATAHIRA</i>	<i>KIMOTO</i>	<i>UMAMICHI</i>	
						Date	<i>20-Oct-2008</i>	<i>20-Oct-2008</i>	<i>21-Oct-2008</i>	<i>22-Oct-2008</i>	

管理 No.X40701



⊗ FIXED SENSOR WITH LEAD CABLE OF 5 METERS  
 ○ NON-FIXED SENSOR WITH LEAD CABLE OF 15 METERS

▲ ▲ ▲ ▲	Rev No.	Description	Date	By	Appr.	Messrs. <b>KITANIHON SHIP BUILDING CO., LTD.</b> SHIP No.507/508 Title <b>SENSOR ARRANGEMENT</b> <b>MAYEKAWA</b> 株式会社 前川製作所	For <b>SENSOR ARRANGEMENT FOR USDA REPORT (2)</b>				
							Q'ty	Scale 1/400	Dwg No. 0736 07-W0200		
							Designed By	Drawn By	Checked By	Appr. By	
							Name	WATANABE	KATAHIRA	KIMOTO	UMAMICHI
						Date	20-Oct-2008	20-Oct-2008	21-Oct-2008	22-Oct-2008	

管理 No.X40701