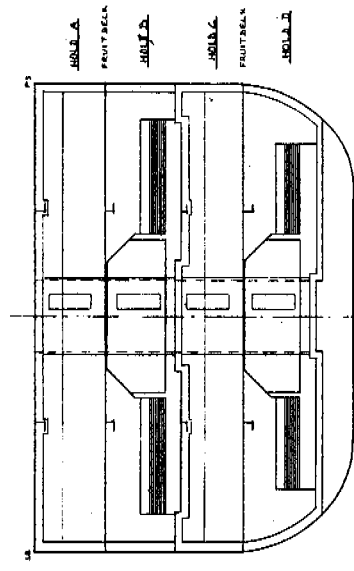
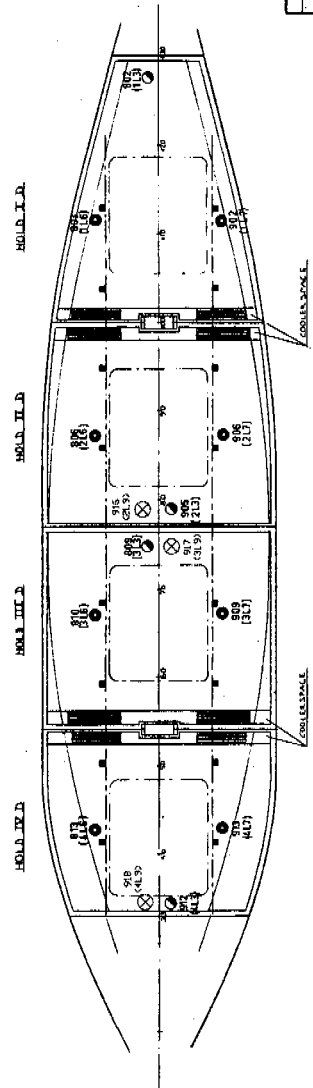
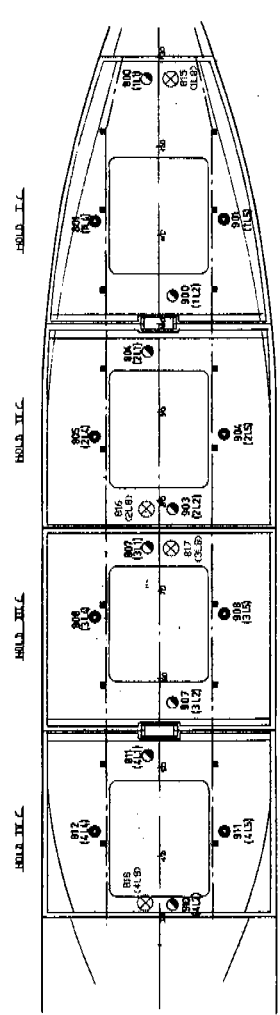
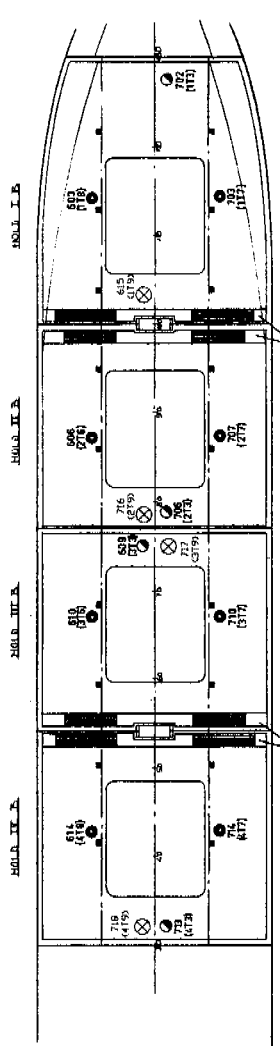
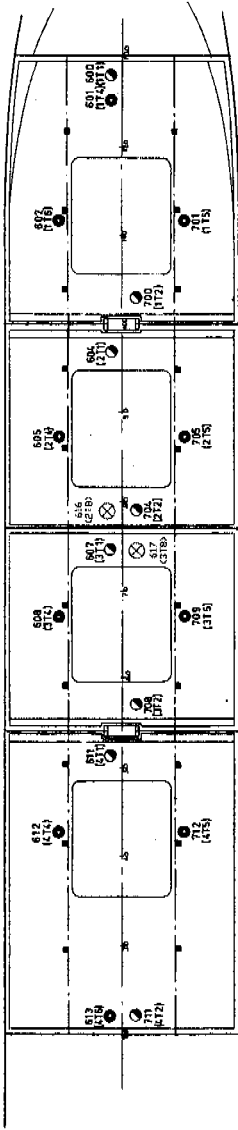


- PILLAR
- FIXED SENSOR FOR MEASURING AIR TEMPERATURE (DINW 631 (50, 100))
- ⊗ MOVABLE SENSOR WITH IIR CABLE FOR MEASURING CARGO TEMPERATURE
- DIMENSIONS OF CARGO TEMPERATURE
- DIMENSIONS OF CARGO TEMPERATURE



- HOLD I.A. 753 P3
- HOLD I.B. 753 P4
- HOLD I.C. 753 P5
- HOLD I.D. 753 P6
- HOLD II.A. 753 P7
- HOLD II.B. 753 P8
- HOLD II.C. 753 P9
- HOLD II.D. 753 P10
- HOLD III.A. 753 P11
- HOLD III.B. 753 P12
- HOLD III.C. 753 P13
- HOLD III.D. 753 P14
- HOLD IV.A. 753 P15
- HOLD IV.B. 753 P16
- HOLD IV.C. 753 P17
- HOLD IV.D. 753 P18

NO.	DATE	BY	DESCRIPTION
C	17-06-2006	N.E.	EXTRA SENSORS HOLD I.B.
B	14-05-05	N.E.	POSITION EXTRA USA SENSORS
A	18-08-05	N.E.	EXTRA USA SENSORS

PROJECT	633.1516-P-06
SCALE	A1
DESIGNER	HERTOEGHONCH - THE NETHERLANDS
DATE	23.11.2005

POSITIONS OF TEMPERATURE SENSORS TO MEET U.S.D.A. REQUIREMENTS



HERTOEGHONCH - THE NETHERLANDS



100 Feet

Holds overview PPECB / USDA sensors

<ul style="list-style-type: none"> ● 812= 0,0 ○ 813= 0,0 ○ 711= 0,0 	<ul style="list-style-type: none"> ○ 0,0 =811 	<ul style="list-style-type: none"> ● 808= 0,0 ○ 0,0 =817 ○ 708= 0,0 	<ul style="list-style-type: none"> ○ 0,0 =807 	<ul style="list-style-type: none"> ● 805= 0,0 ○ 0,0 =804 ○ 616= 0,0 ○ 704= 0,0 	<ul style="list-style-type: none"> ● 802= 0,0 ○ 0,0 =800 ○ 0,0 =801 ○ 700= 0,0 	<ul style="list-style-type: none"> ● 712= 0,0 ● 814= 0,0 	<ul style="list-style-type: none"> ● 709= 0,0 ● 810= 0,0 	<ul style="list-style-type: none"> ○ 0,0 =809 ○ 706= 0,0 ○ 716= 0,0 	<ul style="list-style-type: none"> ● 806= 0,0 ○ 0,0 =803 ○ 707= 0,0 	<ul style="list-style-type: none"> ● 803= 0,0 ○ 0,0 =702 ○ 0,0 =815 ● 703= 0,0
HOLD No. 4B		HOLD No. 3B		HOLD No. 2B		HOLD No. 1B				
<ul style="list-style-type: none"> ○ 713= 0,0 ● 718= 0,0 	<ul style="list-style-type: none"> ○ 0,0 =811 	<ul style="list-style-type: none"> ○ 907= 0,0 ● 808= 0,0 ○ 0,0 =817 ○ 903= 0,0 	<ul style="list-style-type: none"> ○ 0,0 =807 ○ 816= 0,0 ○ 903= 0,0 	<ul style="list-style-type: none"> ● 805= 0,0 ○ 0,0 =804 ○ 900= 0,0 	<ul style="list-style-type: none"> ● 801= 0,0 ○ 0,0 =815 ○ 0,0 =800 ● 901= 0,0 	<ul style="list-style-type: none"> ● 812= 0,0 ○ 910= 0,0 	<ul style="list-style-type: none"> ○ 911= 0,0 ● 813= 0,0 ○ 912= 0,0 ● 918= 0,0 	<ul style="list-style-type: none"> ○ 907= 0,0 ○ 908= 0,0 ○ 909= 0,0 	<ul style="list-style-type: none"> ○ 905= 0,0 ○ 916= 0,0 ○ 906= 0,0 	<ul style="list-style-type: none"> ○ 902= 0,0
HOLD No. 4C		HOLD No. 3C		HOLD No. 2C		HOLD No. 1C				
HOLD No. 4D		HOLD No. 3D		HOLD No. 2D		HOLD No. 1D				

Fixed Sensor

Non Fixed Sensor

AI Overview 1

AI Overview 2

PPECB / USDA holds

Other sensors

Date

Time

Status

Number

Message text

F1: AR + F1: Log in / out

F2: Menu

F3: Alerts

F4: Trending

F5: System

F6: Sensor Overview

F10: Reports

F11: Print Screen

F12: RESE