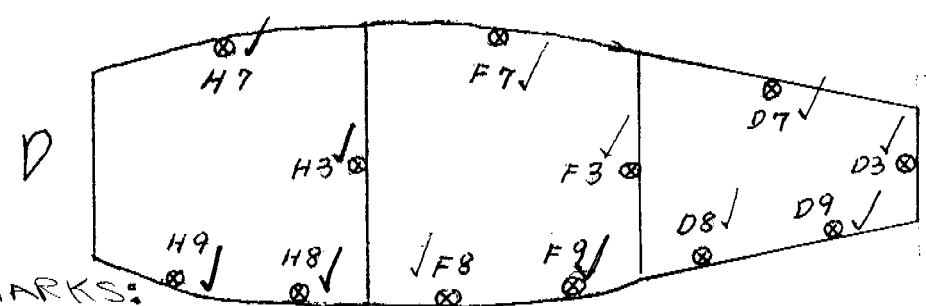
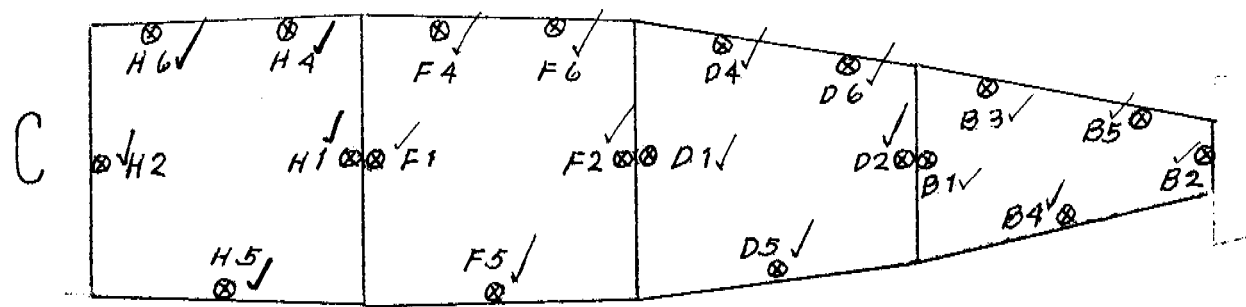
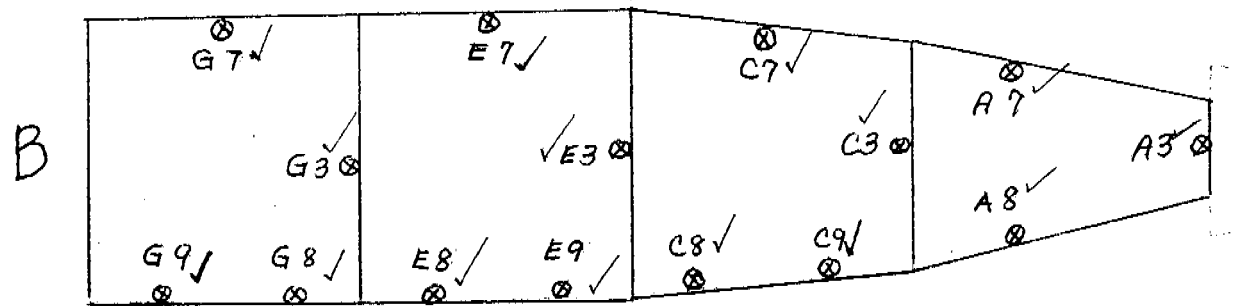
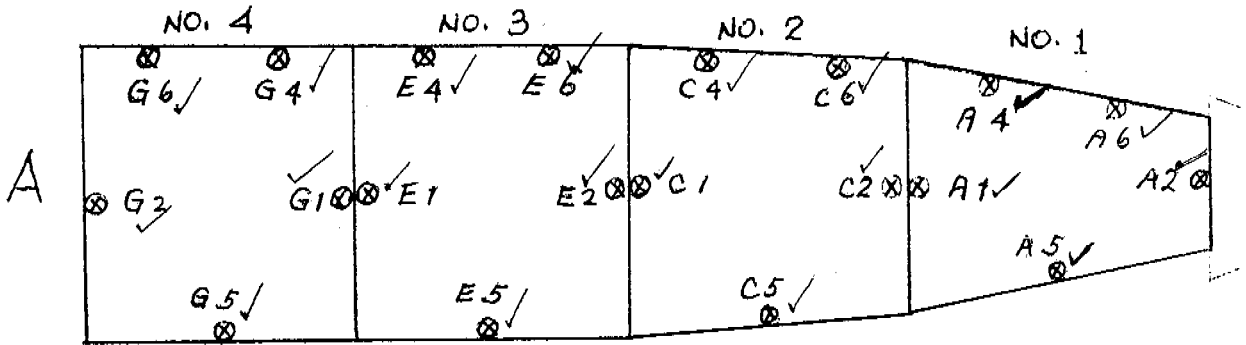


M.V. CHIQUITA ROMA
NASSAU, BAHAMAS

LOCATION OF CARGO HOLD SENSORS



REMARKS:

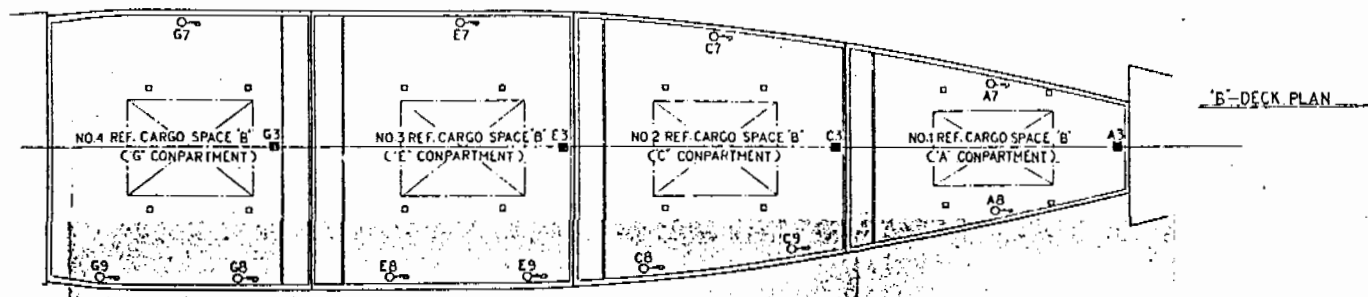
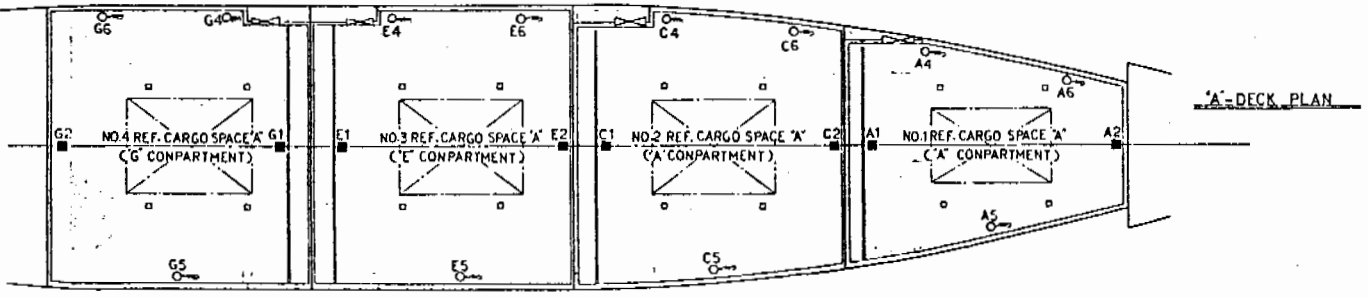
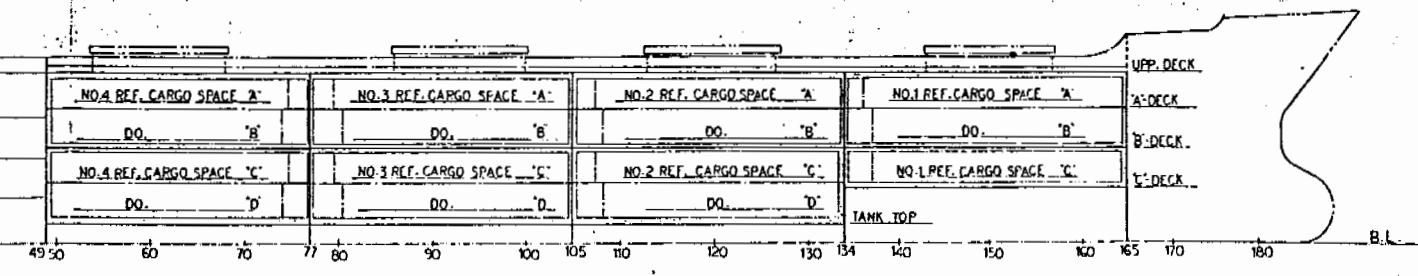
REMARKS:

F1, E6, E7, G1
WERE RE-LABELLED
ON 5/14/91

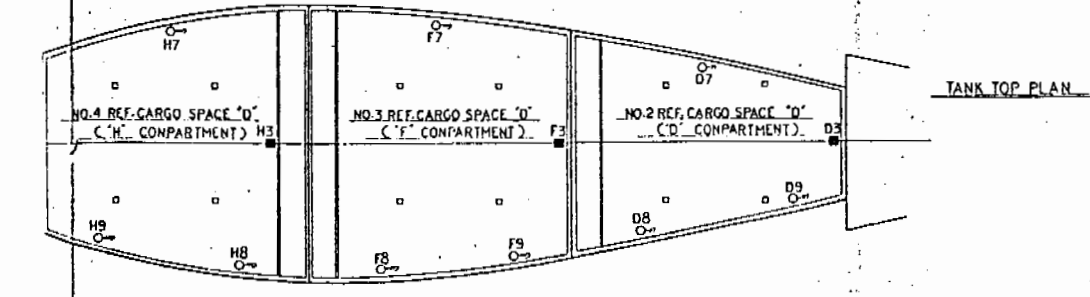
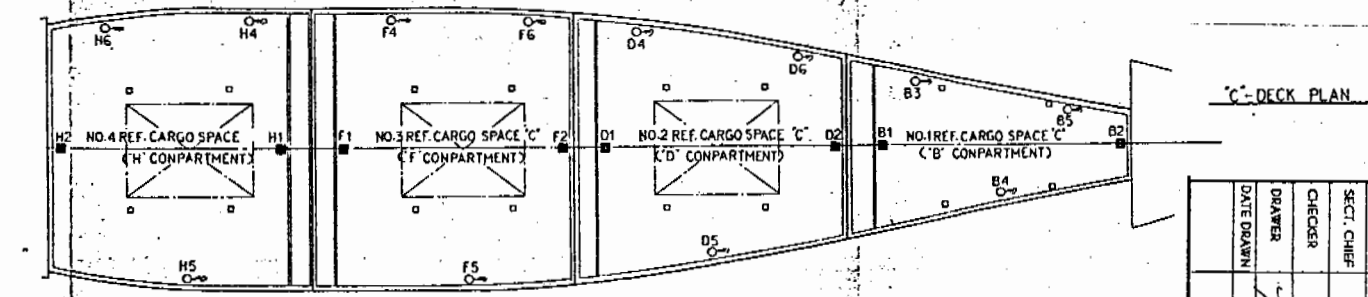
G3 - NEEDS
TO BE
RE-LABELLED
ON WALL;

F1 = NEEDS
TO BE RE-
LABELLED

E6 = NEEDS TO BE
RE-LABELLED
E7 = NEEDS TO BE



■ SHOWS FIXED SENSOR
○ SHOWS NON-FIXED SENSOR



DESIGN DEPARTMENT		NIPPON SABROE CO., LTD.		SNO.266.267	
DESIGNER	SECT. CHIEF	DR. CHIEF	ARRANGEMENT OF SENSOR		
CHECKER	(FOR REF. CARGO. PLANT)				
DATE DRAWN	SCALE	CODE No.	DRAWING No.	REVISED	
		12-7737	33486		

