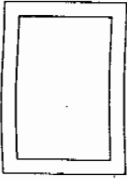
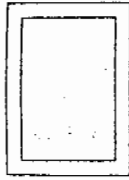


No. 1 U.S.D.A. TEMP. RECORDER



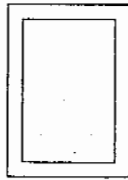
A1~A6
B1~B6
C1~C7

No. 2 U.S.D.A. TEMP. RECORDER



D1~D9
E1~E7
F1~F8

No. 3 U.S.D.A. TEMP. RECORDER



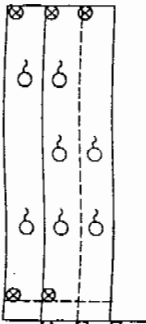
G1~G7
H1~H9

APPROVED
Michael P. [Signature]

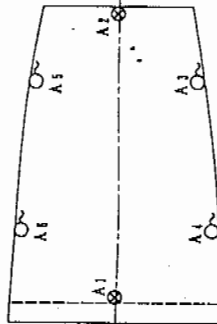
⊗ --- FIXED SENSOR
WITH LEAD CABLE OF 5 METERS

○ --- NON-FIXED SENSOR
WITH LEAD CABLE OF 15 METERS

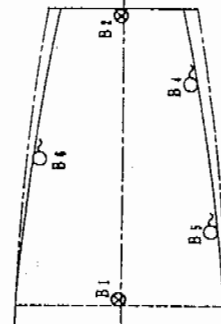
No. 1 CARGO HOLD



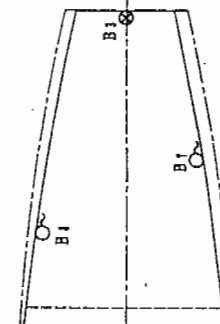
No. 1A CARGO HOLD



No. 1B CARGO HOLD



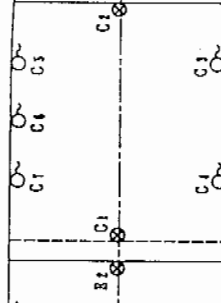
No. 1C CARGO HOLD



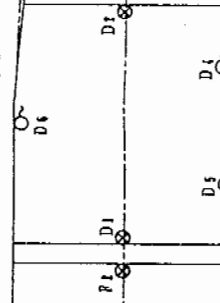
No. 2 CARGO HOLD



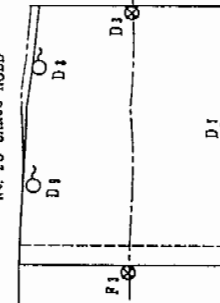
No. 2A CARGO HOLD



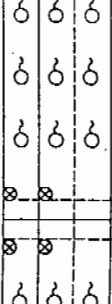
No. 2B CARGO HOLD



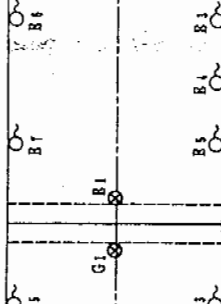
No. 2C CARGO HOLD



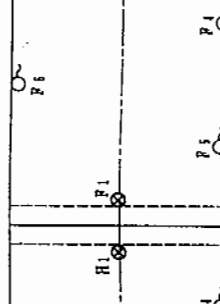
No. 3 CARGO HOLD



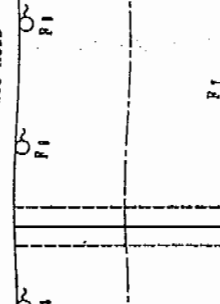
No. 3A CARGO HOLD



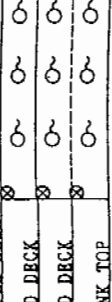
No. 3B CARGO HOLD



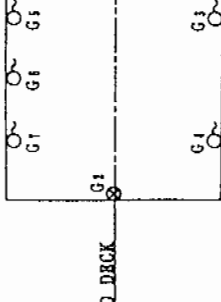
No. 3C CARGO HOLD



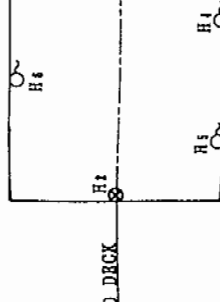
No. 4 CARGO HOLD



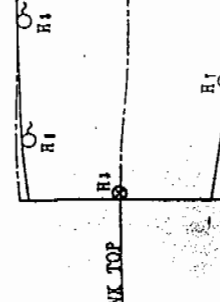
No. 4A CARGO HOLD



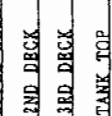
No. 4B CARGO HOLD



No. 4C CARGO HOLD



UPPER DECK



UPPER DECK



2ND DECK



3RD DECK



TANK TOP



MESSER	S. No.	F-1168
DRAWING OF SENSOR ARRANGEMENT FOR U.S.D.A. REPORT		
SCALE	N.S.	DRAWING NO. E 59101-68
NAME	DESIGNED	BY <i>Katada</i> CHECKED <i>APPROVED</i>
DATE	DRAWN	BY <i>Yama</i> DATE <i>1987</i>
MTCOM MATSUYAMA MARINE ENGINEERING CO. LTD. TOKYO JAPAN		

Pa m/v Kamishima