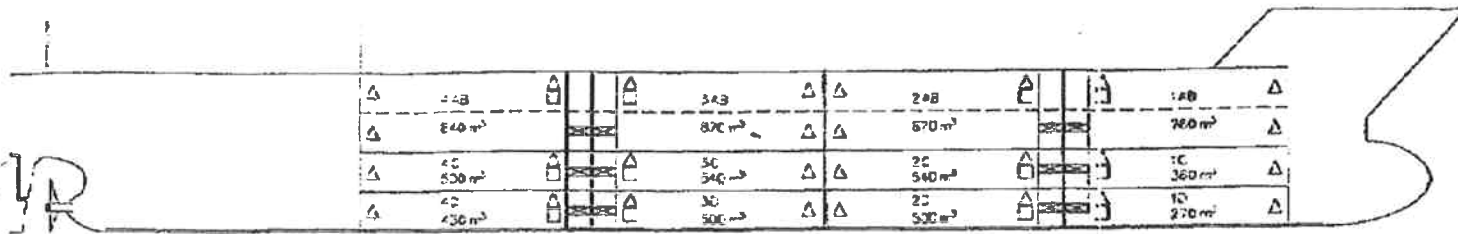


Green Freezer

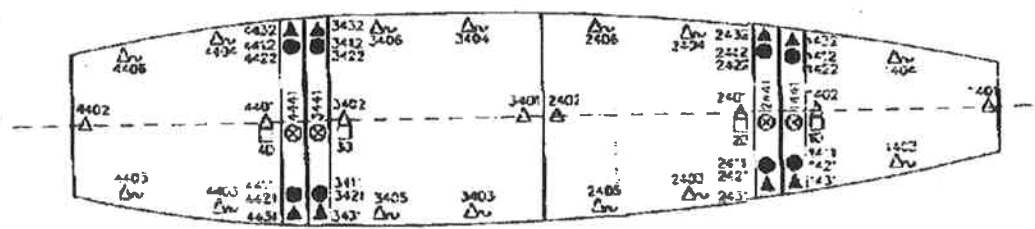
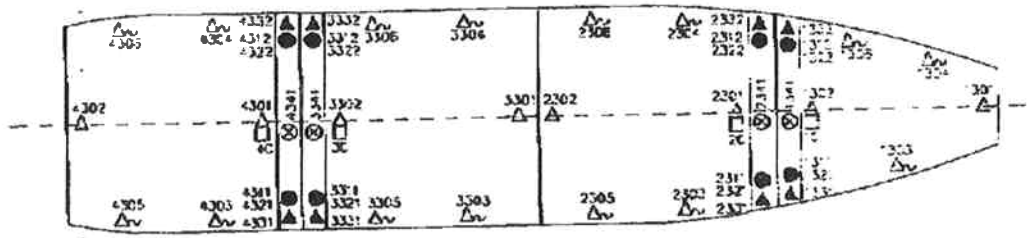
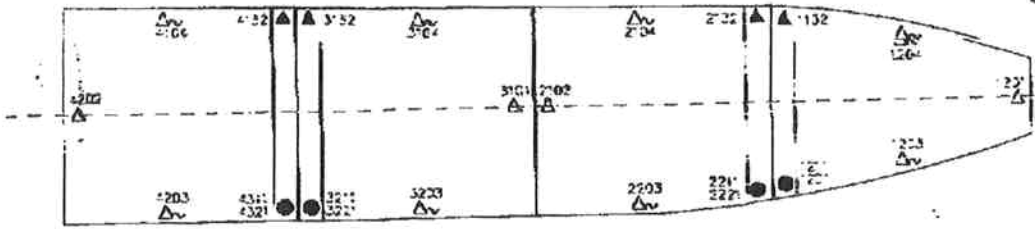
Hull#114

IMO# 8819304

P.02
SEP-15-94 THU 8:44



11 - 100000 = MAIN NUMBER
 12 - 100000 = HOLD NUMBER
 13 - 100000 = C 2500 SENSOR
 14 - 100000 = DELIVERY SENSOR
 15 - 100000 = CONTROL SENSOR
 16 - 100000 = RETURN SENSOR
 17 - 100000 = RECEIPT SENSOR
 18 - 100000 = SENSING SENSOR



△	28	SEDA NR SENSOR, FIXED - ON A LOCKER
▲	24	RETURN NR SENSOR
⊗	12	RELIABILITY SENSOR
●	24	CONTROL SENSOR - DELIVERY SENSOR
□	12	CO ₂ MEASURING INPU

- ALL SENSORS (Per 12)
- Shall be located on the center line of the vessel (crossmembers) 30° maximum from the ceiling
 - Shall be equipped with a tamper proof device to prevent the release of air or pressure from damage from the cargo tank during F-2273
- FAULT SENSORS (Per 12)
- Shall be located in "recessed" compartments to protect from damage when not in use. See drawing F-2273

NO ONE IS TO ENTER VESSEL
 AT ANY TIME UNLESS THE
 SUPERVISOR IS PRESENT AND
 THE VESSEL IS UNDER
 SUPERVISOR CONTROL
 BY THE SUPERVISOR
 AT ALL TIMES

APPROVED
 [Signature]

Approval	Date	Signature	Signature	Signature
STAL	09.08.16	[Signature]	[Signature]	[Signature]

M/V ERIKSON Freezer

1/V ERIKSON FREEZER

USDA - SENSOR TEST

DATE:

4 A		3 A		2 A		1 A	
4104		3104		2104		1104	
0.0		-0.1		0.1		0.1	
0.0		-0.1		0.0		0.1	
102 Fix	4101 Fix	3102 Fix	3101 Fix	2102 Fix	2101 Fix	1102 Fix	1101 Fix
0.0	0.1	0.1	0.1	0.1	0.1	0.1	0.0
0.0	0.1	0.1	0.0	0.1	0.1	0.1	0.0
105	4103	3105	3103	2105	2103	1105	1103
0.0	0.0	0.0	0.1	0.1	0.1	0.1	0.1
0.0	0.0	0.0	0.1	0.1	0.1	0.1	0.1
4 B		3 B		2 B		1 B	
4204		3204		2204		1204	
0.0		0.0		0.0		0.1	
0.0		0.0		0.0		0.1	
202 Fix		3201 Fix	2202 Fix				1201 Fix
0.0		0.1	0.0				0.1
0.0		0.0	0.0				0.0
4203		3203		2203		1203	
0.0		0.1		0.1		0.1	
0.0		0.1		0.1		0.0	

Marvin Felder
 Certified Ok for
 Cold Treatment
 09/21/92

m/v ERIKSON FREEZER

Chief Engineer

