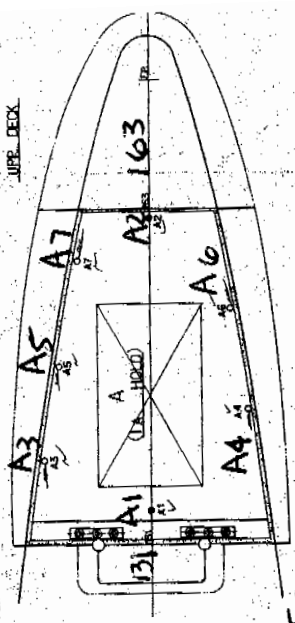
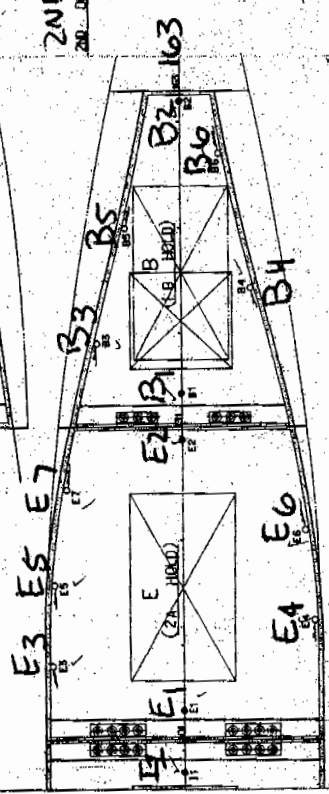


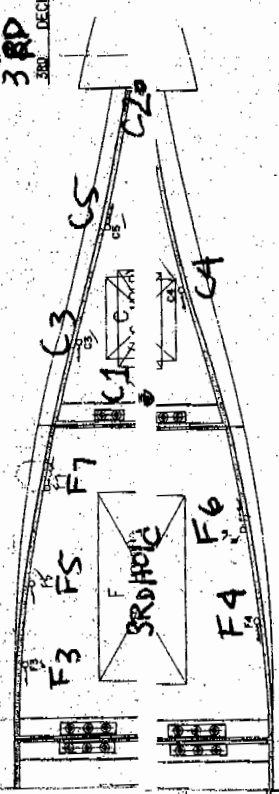
UPPER DECK



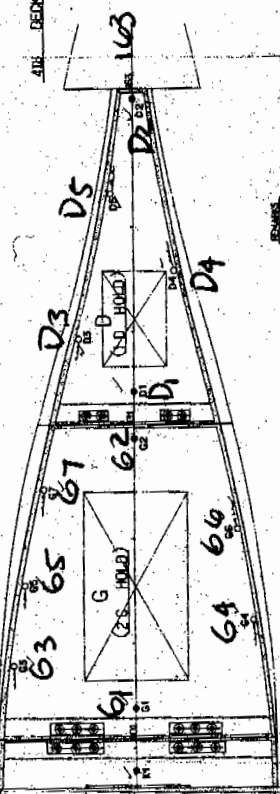
2ND DECK



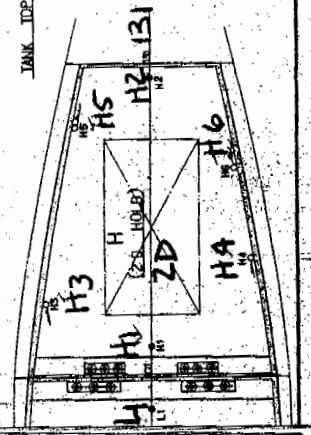
3RD DECK



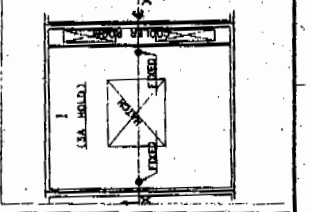
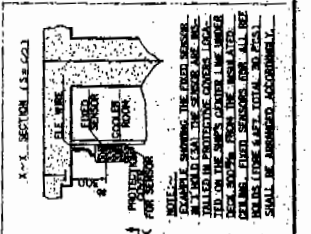
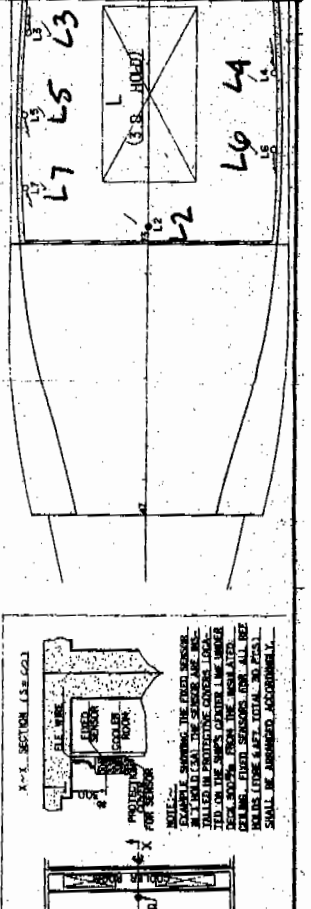
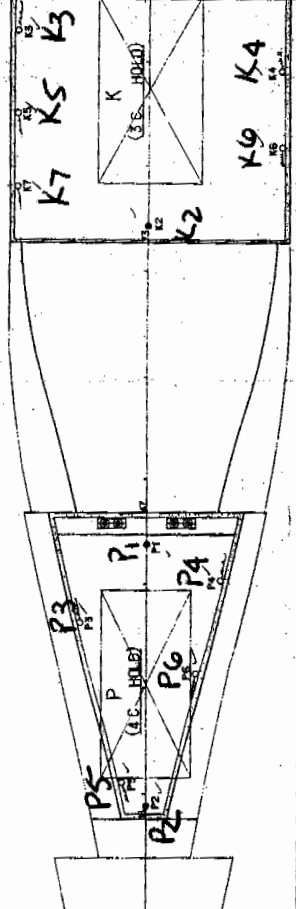
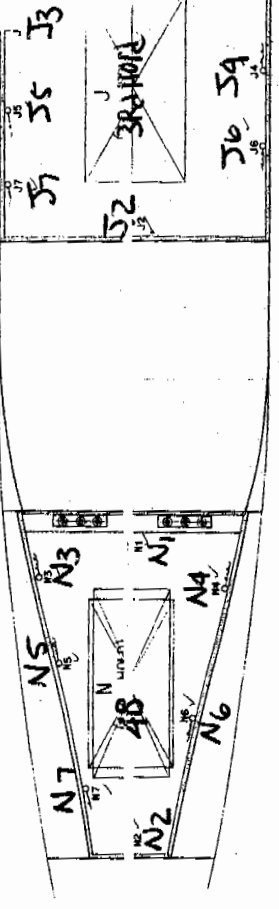
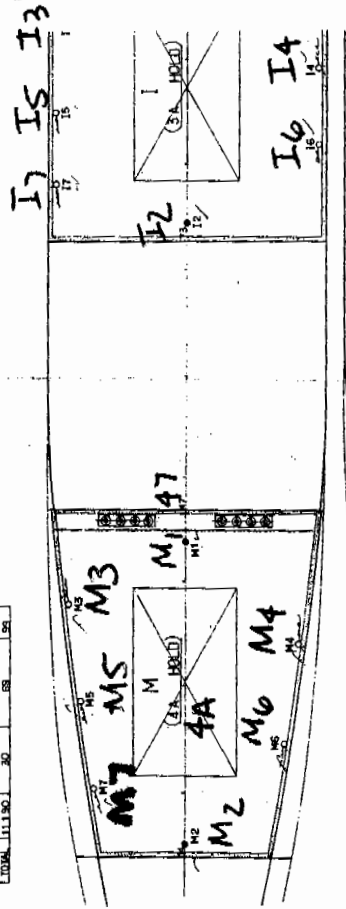
4TH DECK



TANK TOP



MEMBER	VOLUME (CUBIC FEET)	WEIGHT (POUNDS)	TOTAL WEIGHT (POUNDS)
1.A	564	2	1132
1.B	564	2	1132
1.C	457	2	914
1.D	338	2	676
1.E	338	2	676
2.A	404	2	808
2.B	293	2	586
2.C	661	2	1322
2.D	500	2	1000
2.E	500	2	1000
2.F	404	2	808
2.G	293	2	586
2.H	1029	2	2058
2.I	743	2	1486
2.J	481	2	962
TOTAL	11130	40	22260



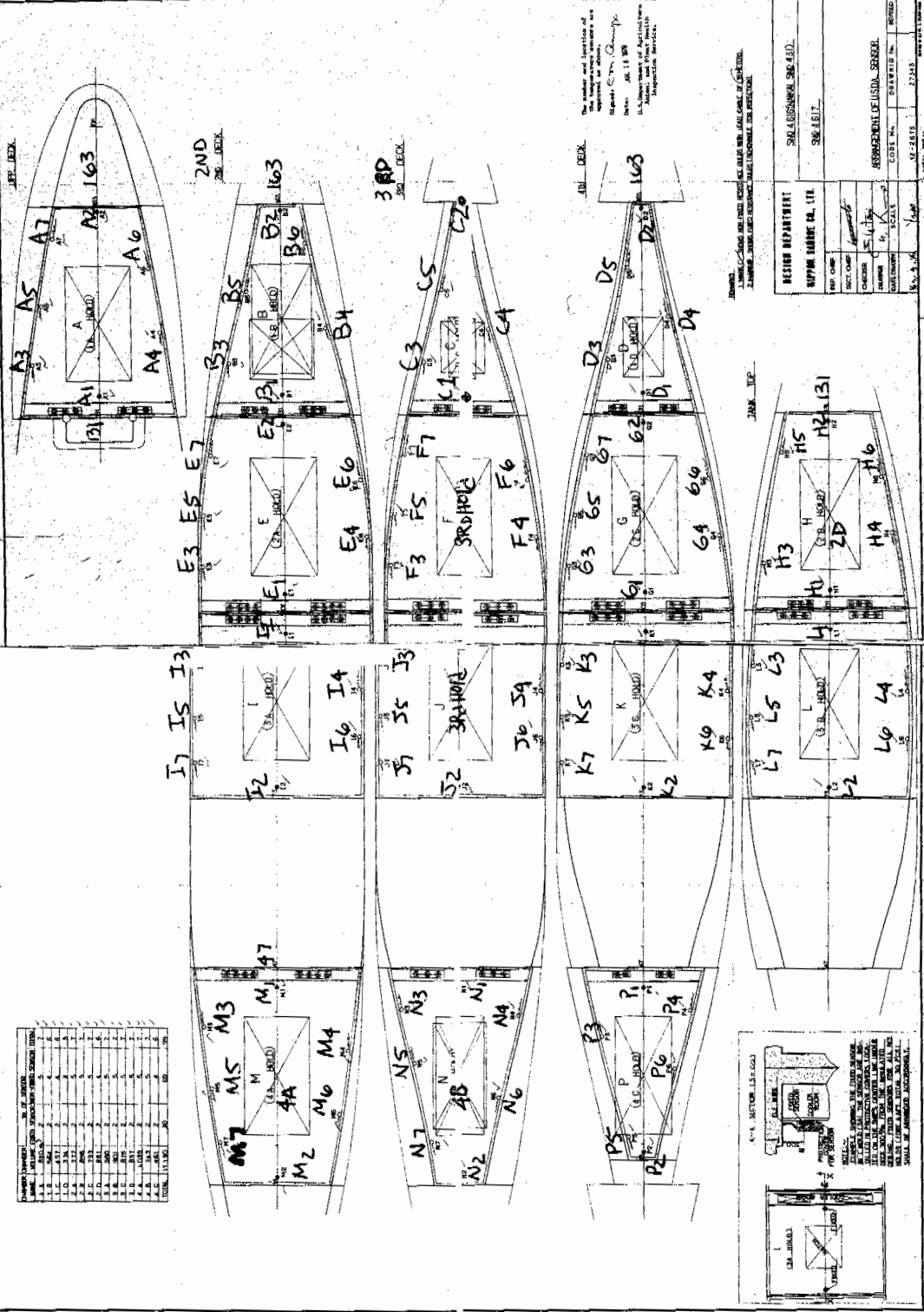
This drawing was prepared as per approved as per Request No. 1 Date: JUL 1 1963 U.S. Department of Defense, Naval and Air Force

REMARKS: 1. MEMBERS SHOWN WITH HOLD BEARING BARS WITH LEAK CHECK PLATE 2. MEMBER WEIGHTS LISTED ARE RESPONSIBLE FOR STRUCTURE

DESIGN DEPARTMENT  
 HUPPARD SURFACE CO., LTD.  
 NO. 0496  
 SECT. 0496  
 CHECKER: [Signature]  
 DRAWN: [Signature]  
 DATE DRAWN: 6-1-63  
 SCALE: 1/4" = 1'-0"

NO. 4818/ANNAKAL SNA 2  
 SNO 4817  
 ARRANGEMENT OF HULL, SEER  
 CODE NO. 12-2672  
 DRAWING NO. 27343  
 SHEET NO. 4

Goose Bay  
Hull No. 4617



NO.	SECTION	WIDTH	HEIGHT	AREA	PERIMETER
1	A1	1.0	1.0	1.0	4.0
2	A2	1.0	1.0	1.0	4.0
3	A3	1.0	1.0	1.0	4.0
4	A4	1.0	1.0	1.0	4.0
5	A5	1.0	1.0	1.0	4.0
6	A6	1.0	1.0	1.0	4.0
7	A7	1.0	1.0	1.0	4.0
8	B1	1.0	1.0	1.0	4.0
9	B2	1.0	1.0	1.0	4.0
10	B3	1.0	1.0	1.0	4.0
11	B4	1.0	1.0	1.0	4.0
12	B5	1.0	1.0	1.0	4.0
13	B6	1.0	1.0	1.0	4.0
14	B7	1.0	1.0	1.0	4.0
15	C1	1.0	1.0	1.0	4.0
16	C2	1.0	1.0	1.0	4.0
17	C3	1.0	1.0	1.0	4.0
18	C4	1.0	1.0	1.0	4.0
19	C5	1.0	1.0	1.0	4.0
20	C6	1.0	1.0	1.0	4.0
21	C7	1.0	1.0	1.0	4.0
22	D1	1.0	1.0	1.0	4.0
23	D2	1.0	1.0	1.0	4.0
24	D3	1.0	1.0	1.0	4.0
25	D4	1.0	1.0	1.0	4.0
26	D5	1.0	1.0	1.0	4.0
27	D6	1.0	1.0	1.0	4.0
28	D7	1.0	1.0	1.0	4.0
29	E1	1.0	1.0	1.0	4.0
30	E2	1.0	1.0	1.0	4.0
31	E3	1.0	1.0	1.0	4.0
32	E4	1.0	1.0	1.0	4.0
33	E5	1.0	1.0	1.0	4.0
34	E6	1.0	1.0	1.0	4.0
35	E7	1.0	1.0	1.0	4.0
36	F1	1.0	1.0	1.0	4.0
37	F2	1.0	1.0	1.0	4.0
38	F3	1.0	1.0	1.0	4.0
39	F4	1.0	1.0	1.0	4.0
40	F5	1.0	1.0	1.0	4.0
41	F6	1.0	1.0	1.0	4.0
42	F7	1.0	1.0	1.0	4.0
43	G1	1.0	1.0	1.0	4.0
44	G2	1.0	1.0	1.0	4.0
45	G3	1.0	1.0	1.0	4.0
46	G4	1.0	1.0	1.0	4.0
47	G5	1.0	1.0	1.0	4.0
48	G6	1.0	1.0	1.0	4.0
49	G7	1.0	1.0	1.0	4.0
50	H1	1.0	1.0	1.0	4.0
51	H2	1.0	1.0	1.0	4.0
52	H3	1.0	1.0	1.0	4.0
53	H4	1.0	1.0	1.0	4.0
54	H5	1.0	1.0	1.0	4.0
55	H6	1.0	1.0	1.0	4.0
56	I1	1.0	1.0	1.0	4.0
57	I2	1.0	1.0	1.0	4.0
58	I3	1.0	1.0	1.0	4.0
59	I4	1.0	1.0	1.0	4.0
60	J1	1.0	1.0	1.0	4.0
61	J2	1.0	1.0	1.0	4.0
62	J3	1.0	1.0	1.0	4.0
63	J4	1.0	1.0	1.0	4.0
64	J5	1.0	1.0	1.0	4.0
65	J6	1.0	1.0	1.0	4.0
66	J7	1.0	1.0	1.0	4.0
67	K1	1.0	1.0	1.0	4.0
68	K2	1.0	1.0	1.0	4.0
69	K3	1.0	1.0	1.0	4.0
70	K4	1.0	1.0	1.0	4.0
71	K5	1.0	1.0	1.0	4.0
72	K6	1.0	1.0	1.0	4.0
73	K7	1.0	1.0	1.0	4.0
74	L1	1.0	1.0	1.0	4.0
75	L2	1.0	1.0	1.0	4.0
76	L3	1.0	1.0	1.0	4.0
77	L4	1.0	1.0	1.0	4.0
78	L5	1.0	1.0	1.0	4.0
79	L6	1.0	1.0	1.0	4.0
80	L7	1.0	1.0	1.0	4.0
81	M1	1.0	1.0	1.0	4.0
82	M2	1.0	1.0	1.0	4.0
83	M3	1.0	1.0	1.0	4.0
84	M4	1.0	1.0	1.0	4.0
85	M5	1.0	1.0	1.0	4.0
86	M6	1.0	1.0	1.0	4.0
87	M7	1.0	1.0	1.0	4.0
88	N1	1.0	1.0	1.0	4.0
89	N2	1.0	1.0	1.0	4.0
90	N3	1.0	1.0	1.0	4.0
91	N4	1.0	1.0	1.0	4.0
92	N5	1.0	1.0	1.0	4.0
93	N6	1.0	1.0	1.0	4.0
94	N7	1.0	1.0	1.0	4.0
95	O1	1.0	1.0	1.0	4.0
96	O2	1.0	1.0	1.0	4.0
97	O3	1.0	1.0	1.0	4.0
98	O4	1.0	1.0	1.0	4.0
99	O5	1.0	1.0	1.0	4.0
100	O6	1.0	1.0	1.0	4.0
101	O7	1.0	1.0	1.0	4.0
102	P1	1.0	1.0	1.0	4.0
103	P2	1.0	1.0	1.0	4.0
104	P3	1.0	1.0	1.0	4.0
105	P4	1.0	1.0	1.0	4.0
106	P5	1.0	1.0	1.0	4.0
107	P6	1.0	1.0	1.0	4.0
108	P7	1.0	1.0	1.0	4.0
109	Q1	1.0	1.0	1.0	4.0
110	Q2	1.0	1.0	1.0	4.0
111	Q3	1.0	1.0	1.0	4.0
112	Q4	1.0	1.0	1.0	4.0
113	Q5	1.0	1.0	1.0	4.0
114	Q6	1.0	1.0	1.0	4.0
115	Q7	1.0	1.0	1.0	4.0
116	R1	1.0	1.0	1.0	4.0
117	R2	1.0	1.0	1.0	4.0
118	R3	1.0	1.0	1.0	4.0
119	R4	1.0	1.0	1.0	4.0
120	R5	1.0	1.0	1.0	4.0
121	R6	1.0	1.0	1.0	4.0
122	R7	1.0	1.0	1.0	4.0

The number and location of  
hatch covers are shown on this  
drawing and are to be used as  
a guide only. All hatch covers  
are to be of the type shown on  
this drawing. All hatch covers  
are to be of the type shown on  
this drawing. All hatch covers  
are to be of the type shown on  
this drawing.

SHIP NAME: SHALISSAWAL SHIP  
SHIP NO.: 111  
SHIP TYPE: SHIP  
DESIGN: SHIP  
SCALE: 1/4" = 1'-0"  
DATE: 12-28-15  
DRAWN BY: [Signature]  
CHECKED BY: [Signature]  
APPROVED BY: [Signature]

