

# EMERALD

## Hull No. 181

UNITED STATES DEPARTMENT OF COMMERCE

**ACCEPTED**

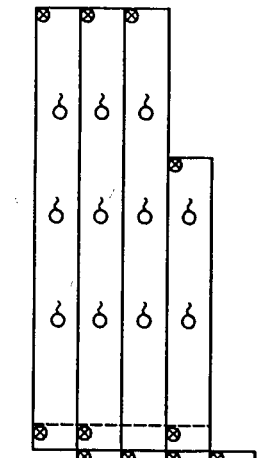
*P. F. Emerald*  
Signature  
Date

○ — NON-FIXED SENSOR  
WITH LEAD CABLE OF 15 METERS

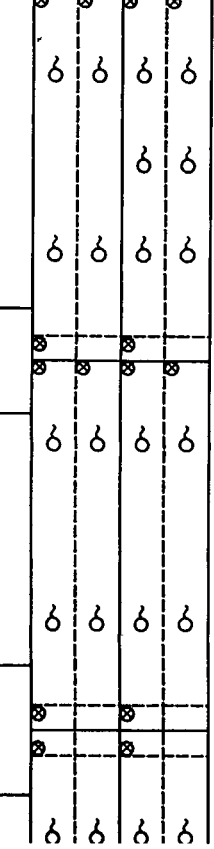
⊗ — FIXED SENSOR  
WITH LEAD CABLE OF 5 METERS

VESSEL		S. NO. 2181/88	
FOR		DRAWING OF SENSOR ARRANGEMENT FOR U.S.D.A. REPORT	
SCALE	N.S.	DRAWING NO.	B59903 - 80
NAME	DESIGNED	DRAWN	CHECKED
DATE			APPROVED
MYCOM MAYEKAWA MARINE ENGINEERING CO., LTD. TOKYO, JAPAN			

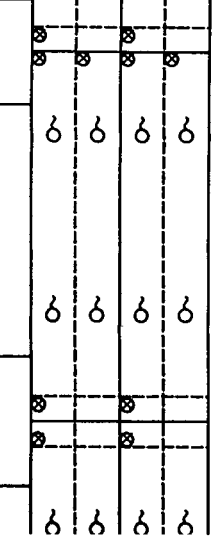
NO. 1 CARGO HOLD



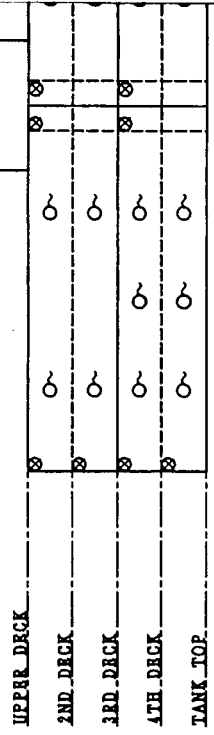
NO. 2 CARGO HOLD



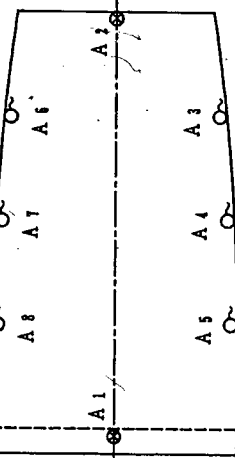
NO. 3 CARGO HOLD



NO. 4 CARGO HOLD

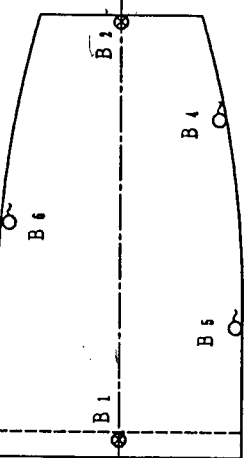


NO. 1A CARGO HOLD



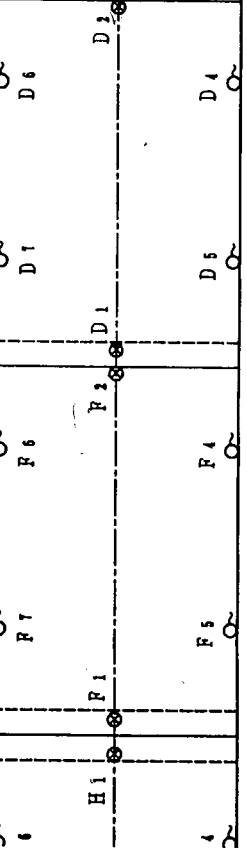
UPPER DECK

NO. 1B CARGO HOLD

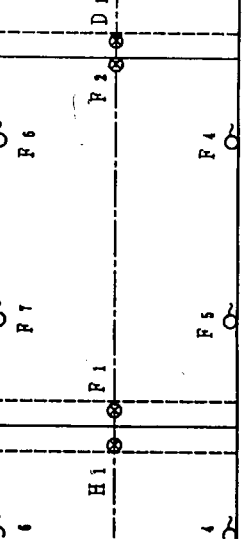


2ND DECK

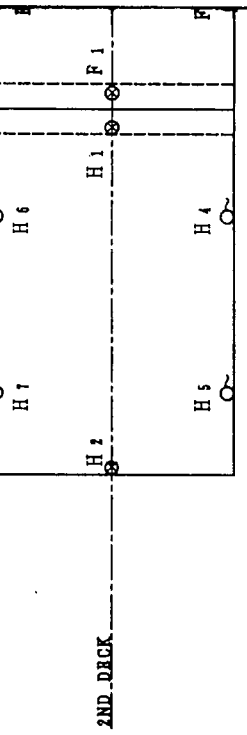
NO. 2A CARGO HOLD



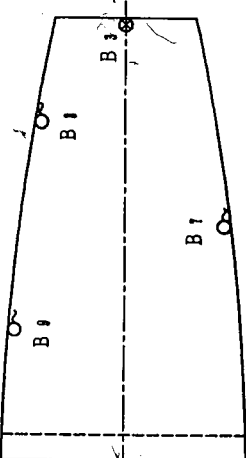
NO. 3A CARGO HOLD



NO. 4A CARGO HOLD

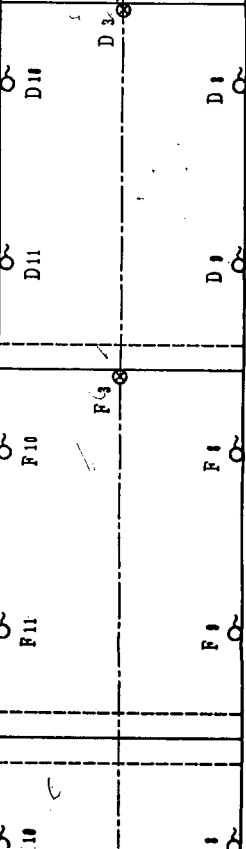


NO. 1C CARGO HOLD

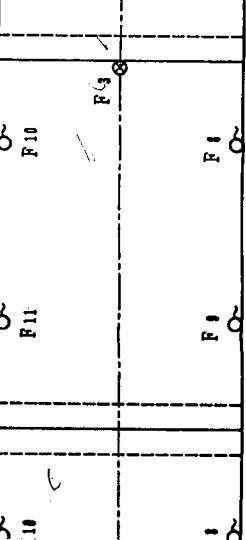


3RD DECK

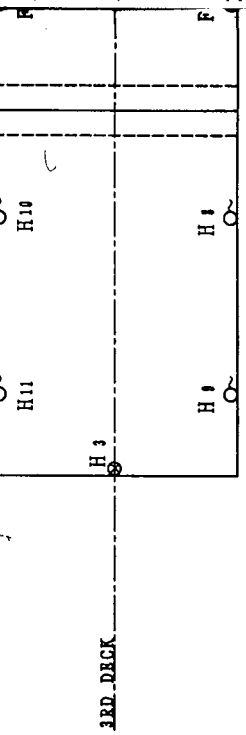
NO. 2B CARGO HOLD



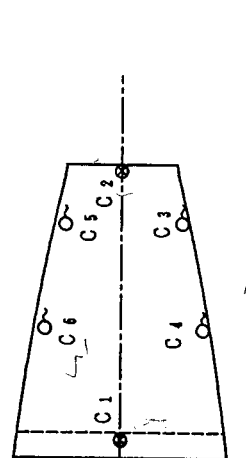
NO. 3B CARGO HOLD



NO. 4B CARGO HOLD

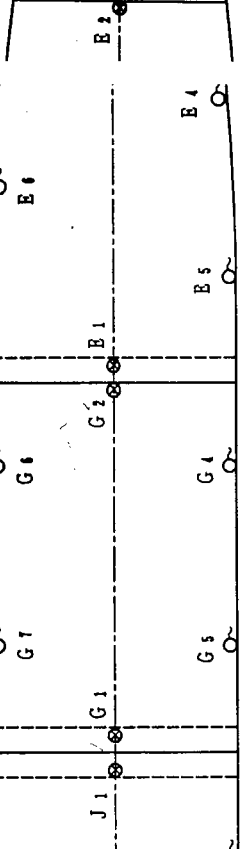


NO. 1D CARGO HOLD

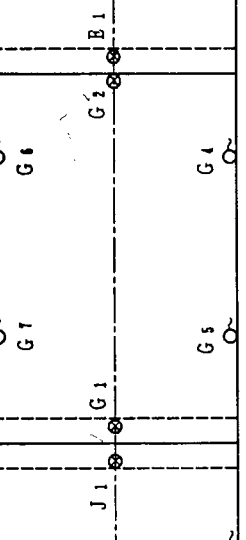


4TH DECK

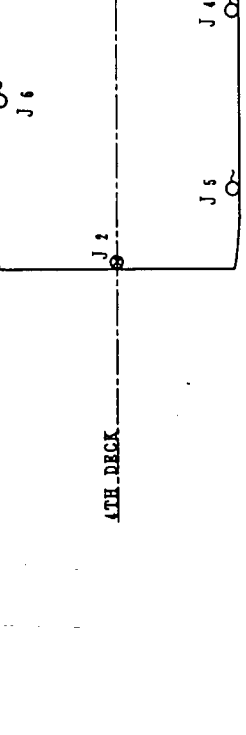
NO. 2C CARGO HOLD



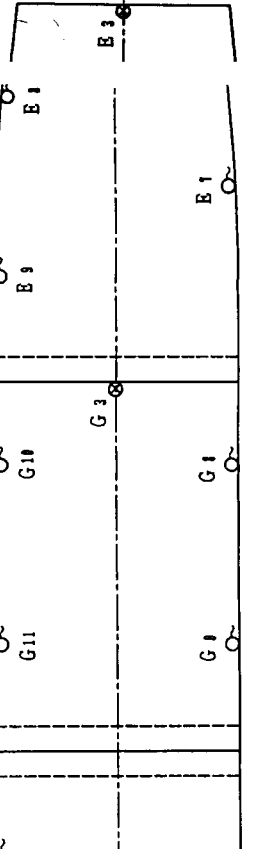
NO. 3C CARGO HOLD



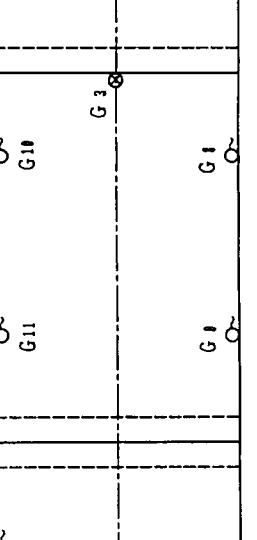
NO. 4C CARGO HOLD



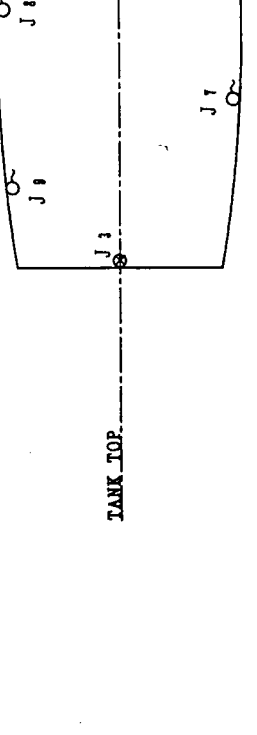
NO. 2D CARGO HOLD



NO. 3D CARGO HOLD



NO. 4D CARGO HOLD



TANK TOP