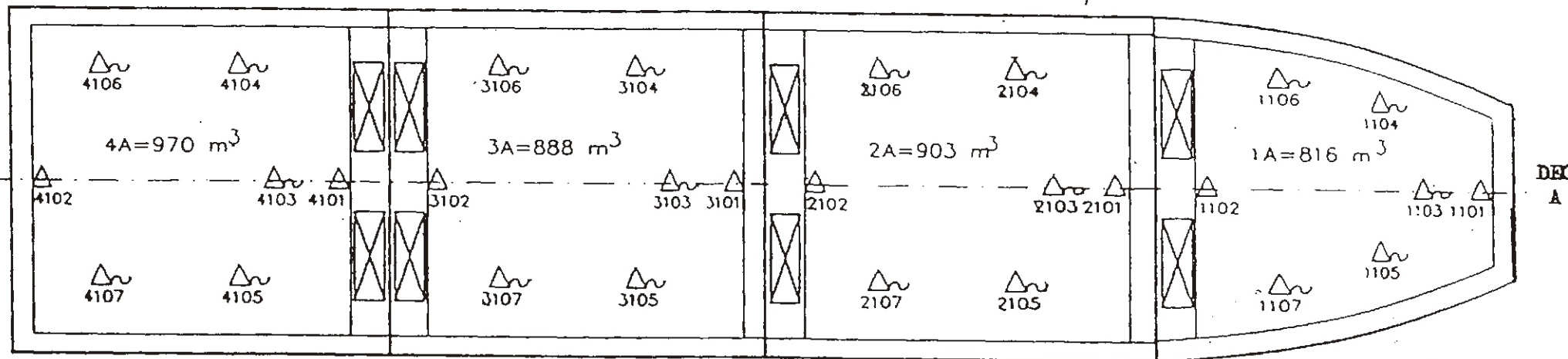
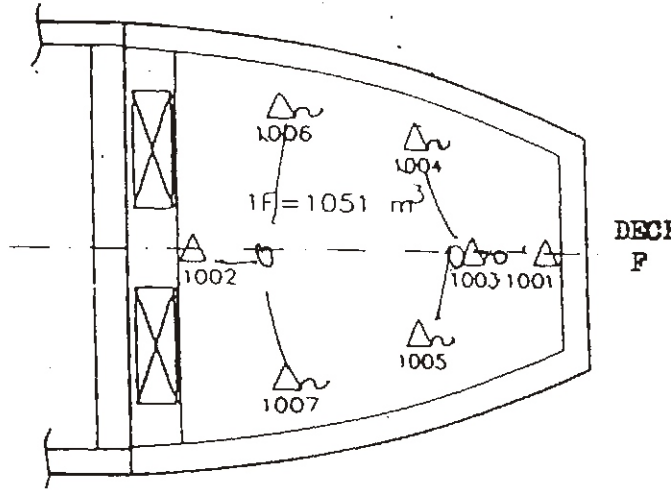
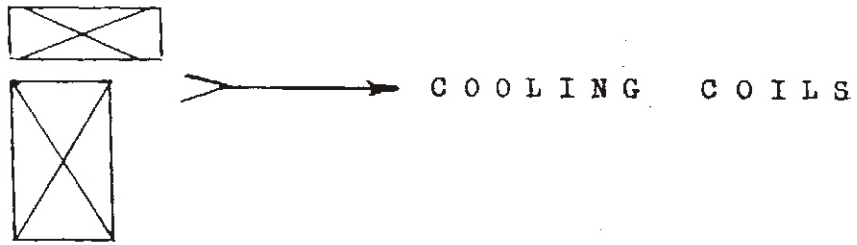
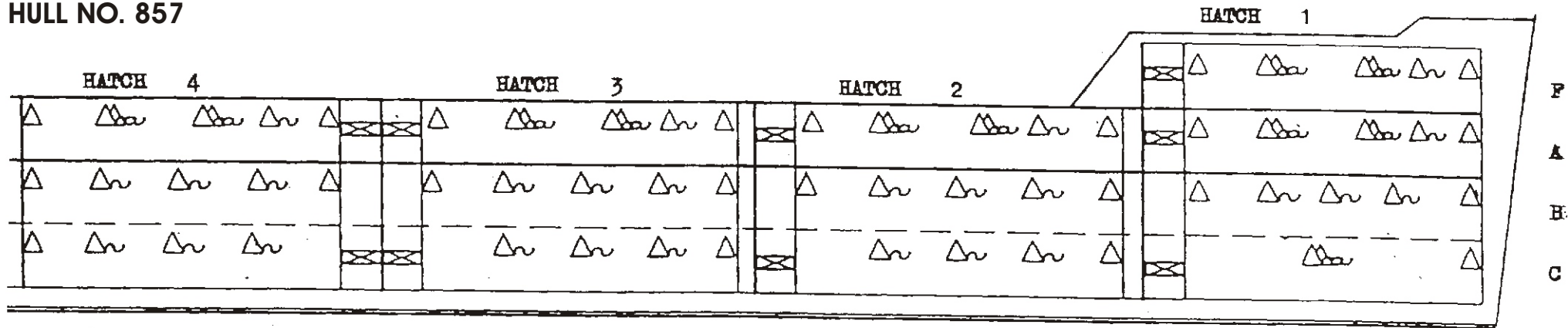
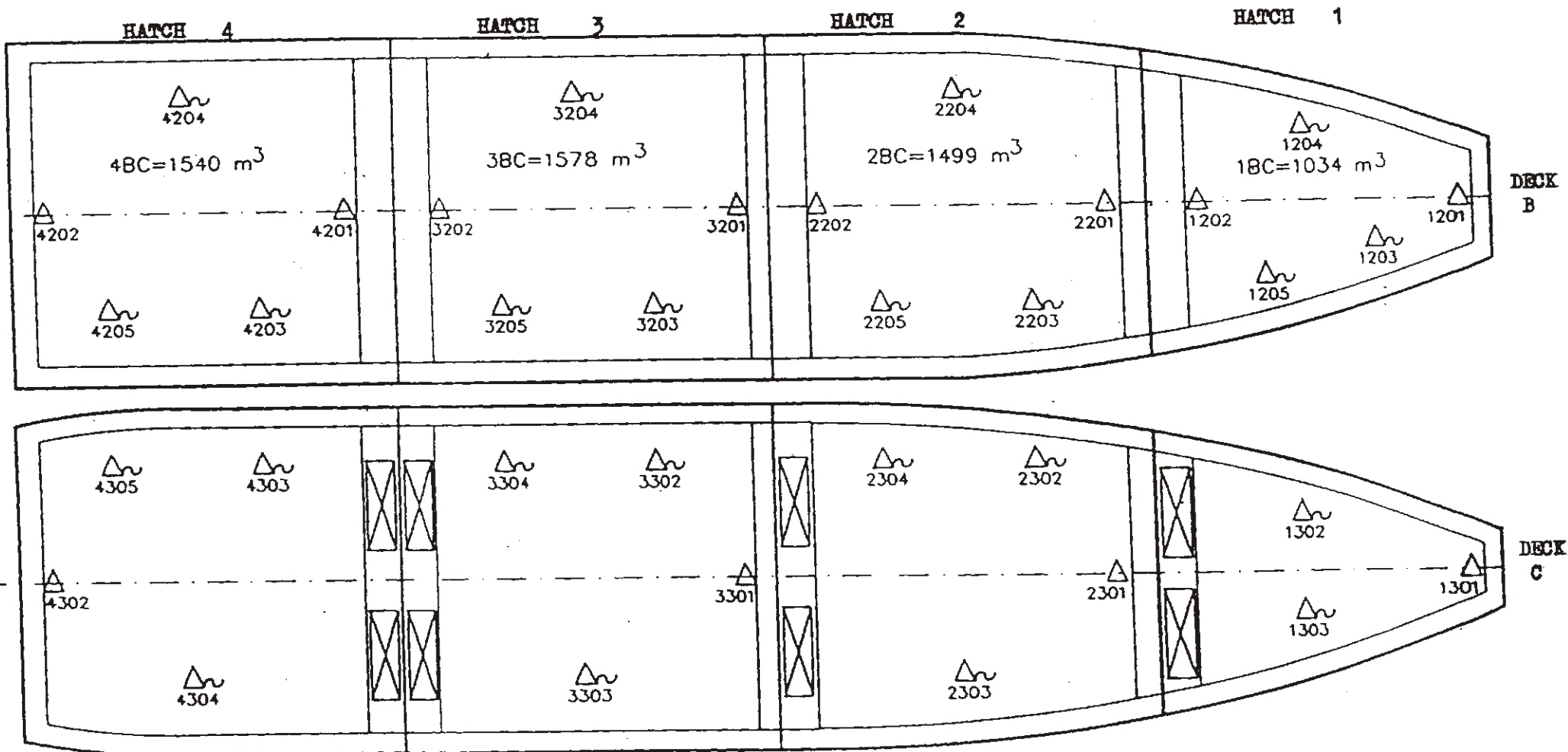


ELBRUS
HULL NO. 857





AIR SENSORS (FIXED)

SHALL BE LOCATED ON THE CENTERLINE OF THE VESSEL, APPROXIMATELY 30 CENTIMETERS FROM THE CEILING.

SHALL BE ATTACHED IN SUCH A WAY THAT THEY DON'T TOUCH THE BULKHEAD AND ARE PROTECTED FROM DAMAGE CAUSED BY THE CARGO.

NB 857

363 000 cu.ft REEFER VESSEL

YARD: SHIKOKU, JAPAN

OWNER: YASHIMA SHIPPING CO. LTD, JAPAN

STAL'S NO: B-9673.0055

FRUIT SENSORS (PORTABLE)

SHALL BE STOWED IN RECESSED BOXES TO BE PROTECTED FROM DAMAGE WHEN NOT IN USE.

PROPOSAL OF BOXES FOR USDA FRUIT SENSORS, SEE DRAWING F-22731

SYMBOL	QUANTITY	DESCRIPTION
△	22	USDA AIR SENSOR, FIXED DATA LOGGER
⋈	48	USDA FRUIT SENSOR, PORTABLE DATA LOGGER