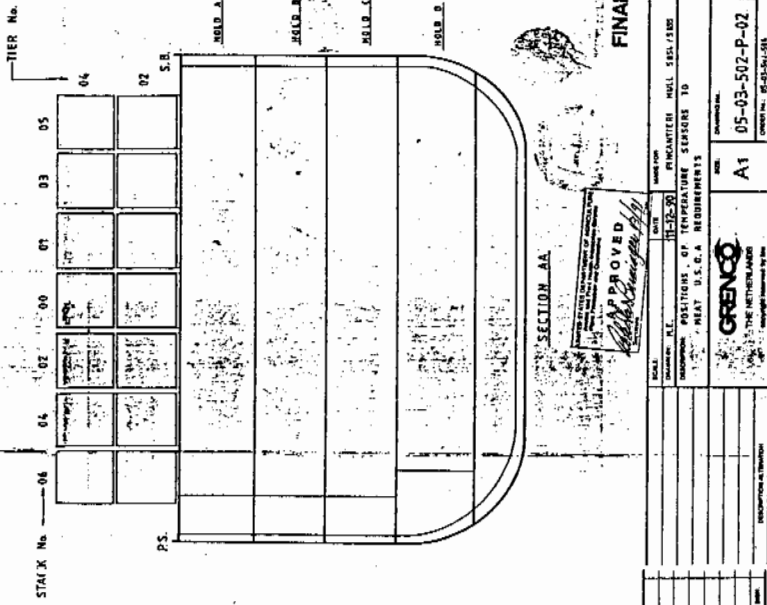


HOLD 1A	-	14.62 m ³
HOLD 1B	-	14.06 m ³
HOLD 1C	-	1180 m ³
HOLD 1D	-	636 m ³
HOLD 2A	-	1160 m ³
HOLD 2B	-	1129 m ³
HOLD 2C	-	1116 m ³
HOLD 2D	-	1005 m ³

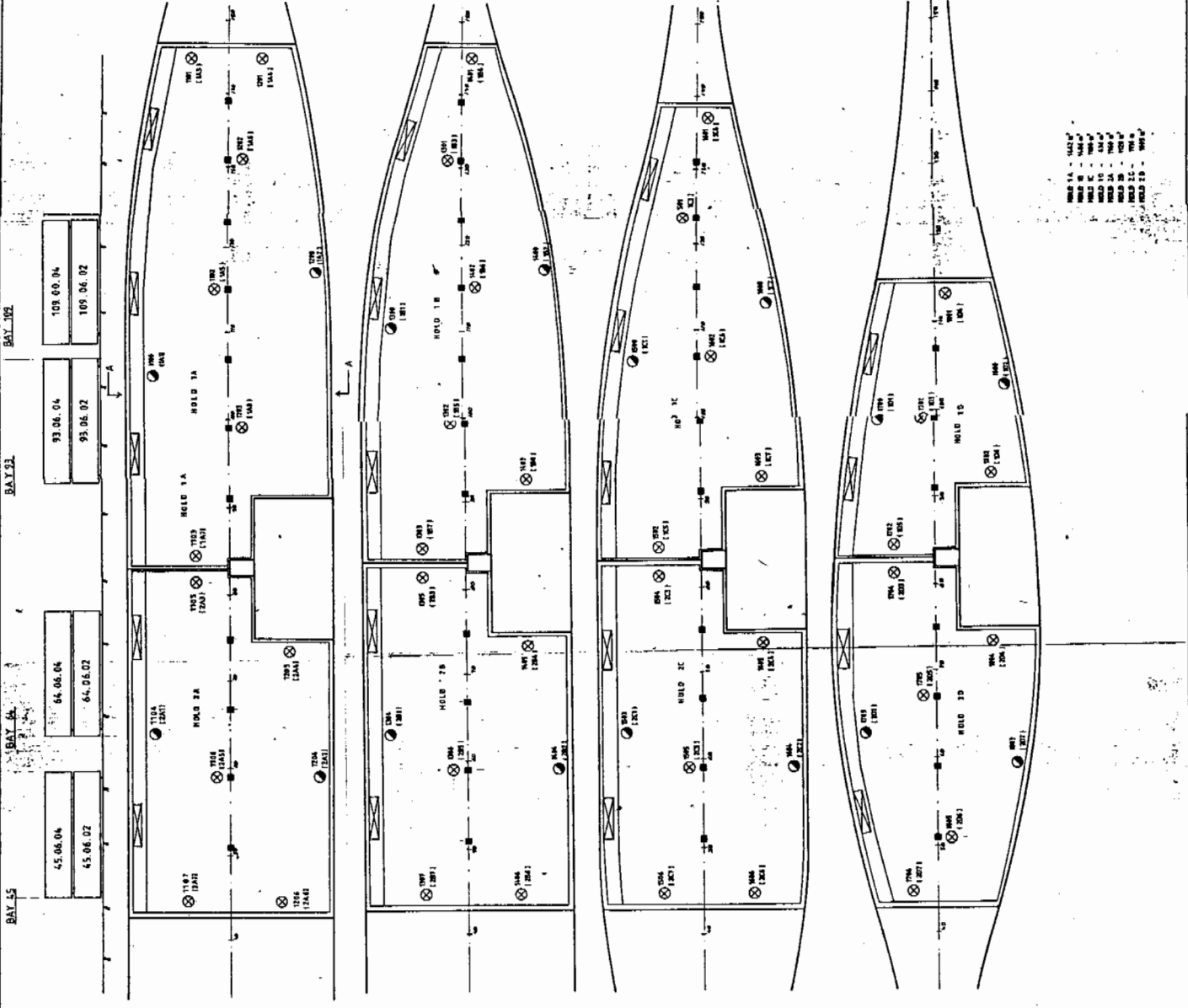
IN PINK
CROSS CHECKED FOR WELDING AIR TEMPERATURE DRAWN REASON
CROSS CHECKED WITH WELDER'S LIST OF DUMPS DRAWN REASON
FOR WELDING AIR TEMPERATURE

BAY	CONTAINERS				
	04	05	06	07	08
45	X	X	X	X	X
46	X	X	X	X	X
47	X	X	X	X	X
48	X	X	X	X	X
49	X	X	X	X	X
50	X	X	X	X	X
51	X	X	X	X	X
52	X	X	X	X	X
53	X	X	X	X	X
54	X	X	X	X	X
55	X	X	X	X	X
56	X	X	X	X	X
57	X	X	X	X	X
58	X	X	X	X	X
59	X	X	X	X	X
60	X	X	X	X	X
61	X	X	X	X	X
62	X	X	X	X	X
63	X	X	X	X	X
64	X	X	X	X	X
65	X	X	X	X	X
66	X	X	X	X	X
67	X	X	X	X	X
68	X	X	X	X	X
69	X	X	X	X	X
70	X	X	X	X	X
71	X	X	X	X	X
72	X	X	X	X	X
73	X	X	X	X	X
74	X	X	X	X	X
75	X	X	X	X	X
76	X	X	X	X	X
77	X	X	X	X	X
78	X	X	X	X	X
79	X	X	X	X	X
80	X	X	X	X	X
81	X	X	X	X	X
82	X	X	X	X	X
83	X	X	X	X	X
84	X	X	X	X	X
85	X	X	X	X	X
86	X	X	X	X	X
87	X	X	X	X	X
88	X	X	X	X	X
89	X	X	X	X	X
90	X	X	X	X	X
91	X	X	X	X	X
92	X	X	X	X	X
93	X	X	X	X	X
94	X	X	X	X	X
95	X	X	X	X	X
96	X	X	X	X	X
97	X	X	X	X	X
98	X	X	X	X	X
99	X	X	X	X	X
100	X	X	X	X	X

X = CONTAINER PER WELDING CONTAINER No. 20 04 05
BAY STACK TIER



HOLD 1A - 142' 6"
HOLD 1B - 142' 6"
HOLD 1C - 142' 6"
HOLD 1D - 142' 6"
HOLD 1E - 142' 6"
HOLD 1F - 142' 6"
HOLD 1G - 142' 6"
HOLD 1H - 142' 6"
HOLD 1I - 142' 6"
HOLD 1J - 142' 6"



APPROVED
[Signature]

DATE: 11-28-58

POSITIONS OF TEMPERATURE SENSORS TO MEET U.S.C.A. REQUIREMENTS

CRESCO THE HETTERLAND

A1

05-03-502-P-02