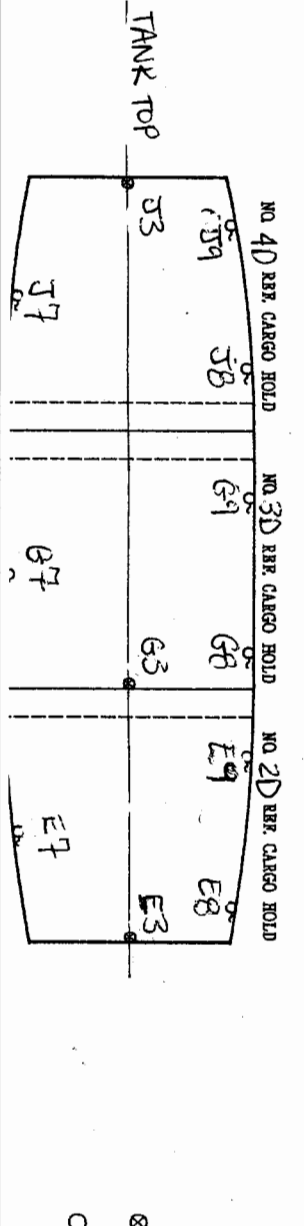
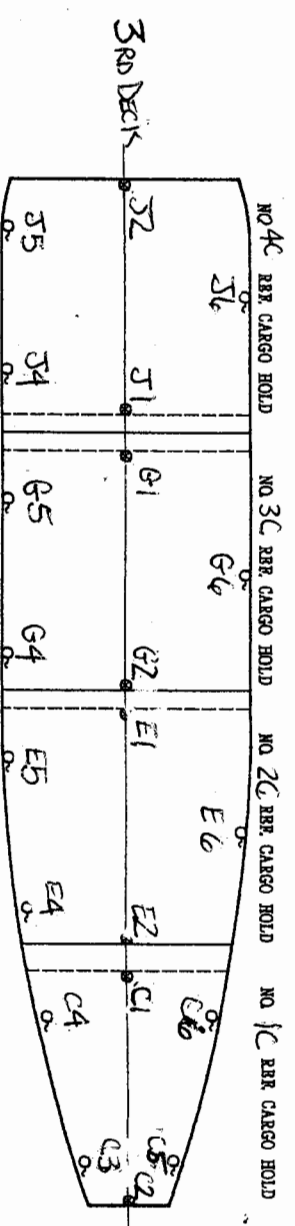
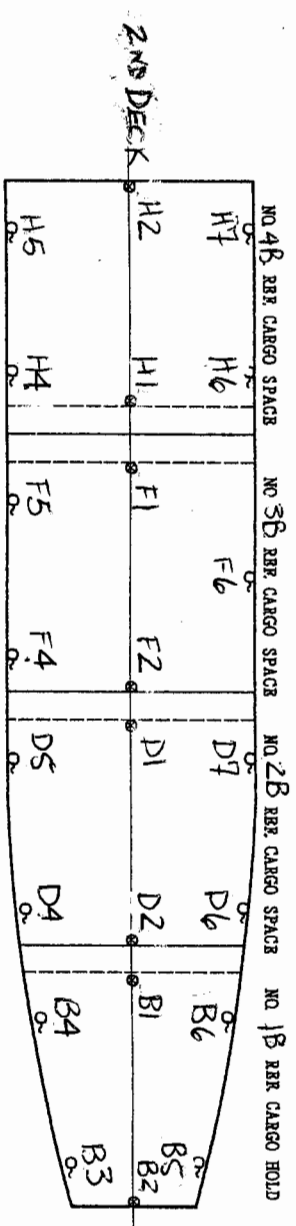
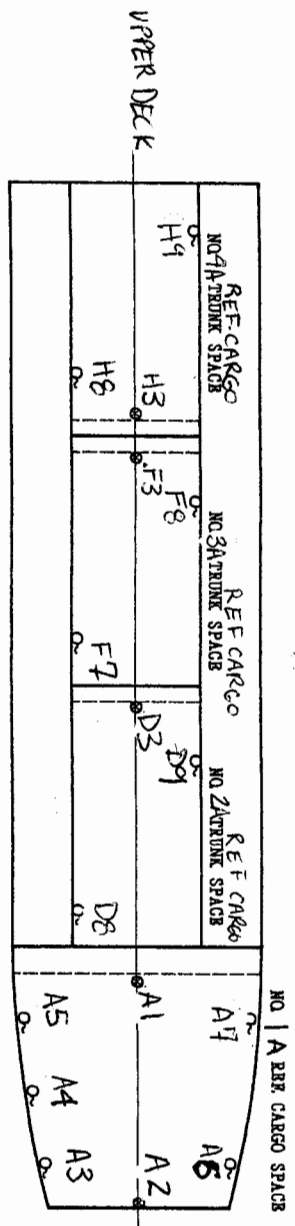
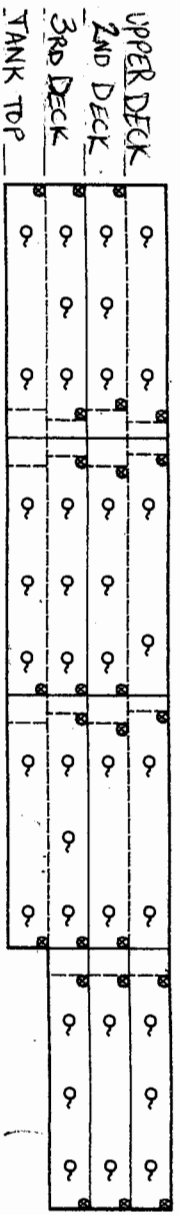


SENSOR ARRANGEMENT FOR U. S. D. A. REPORT

Prince of Seas  
Hull No. 266



○ ——— FIXED SENSOR  
○ ——— NON-FIXED SEN

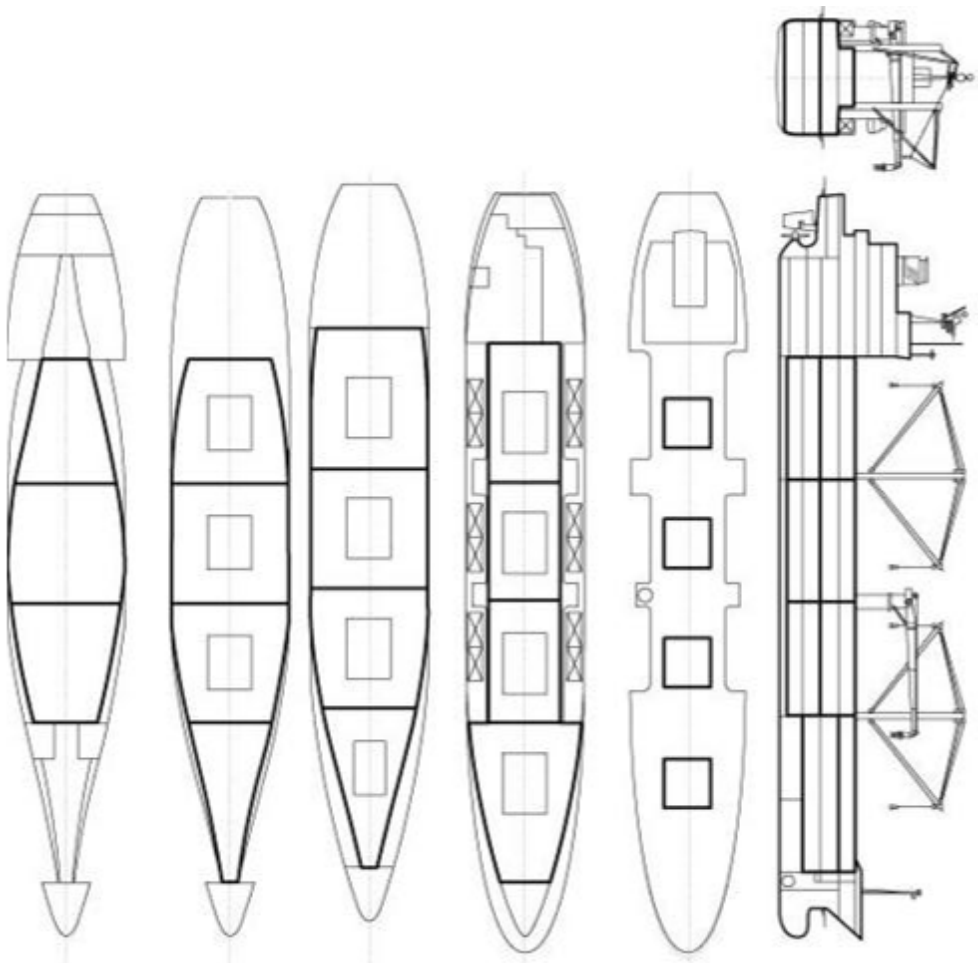


Image on this page for broad reference only.

This diagram more clearly illustrates vessel holds and compartments w/in the context of the full vessel layout. Image captured from Seatrade's fleet list online on 2015-04-21 and added to sensor diagram on file w/ USDA APHIS PPQ.

**Prince of Seas - IMO #9014444**