

Air sensors (fixed)

Shall be located on the centerline on the approximately 30 centimeters from the

Shall be attached in such a way that it touch the bulkhead and are protect from caused by the cargo.

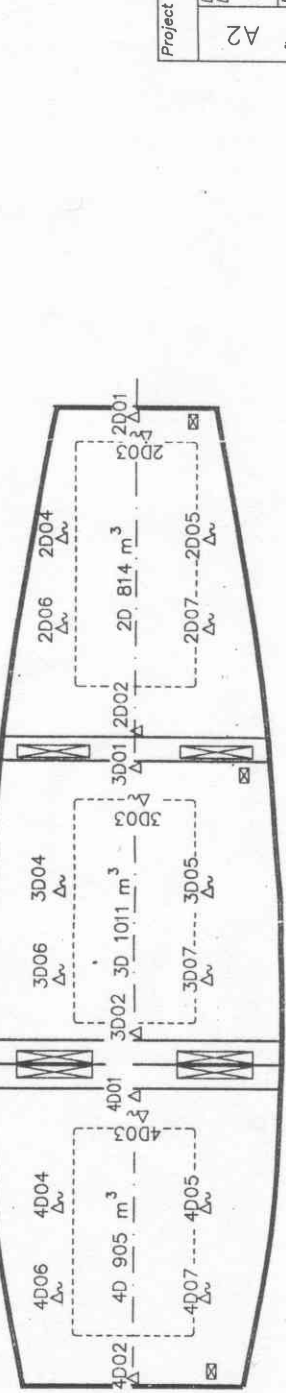
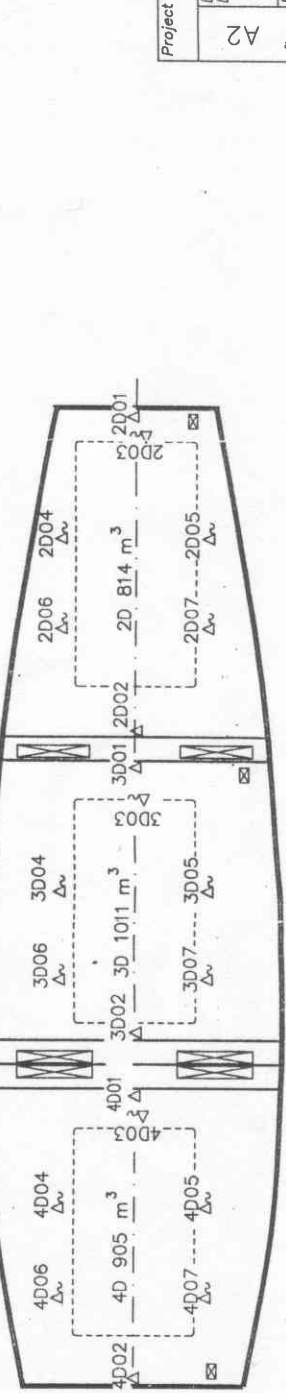
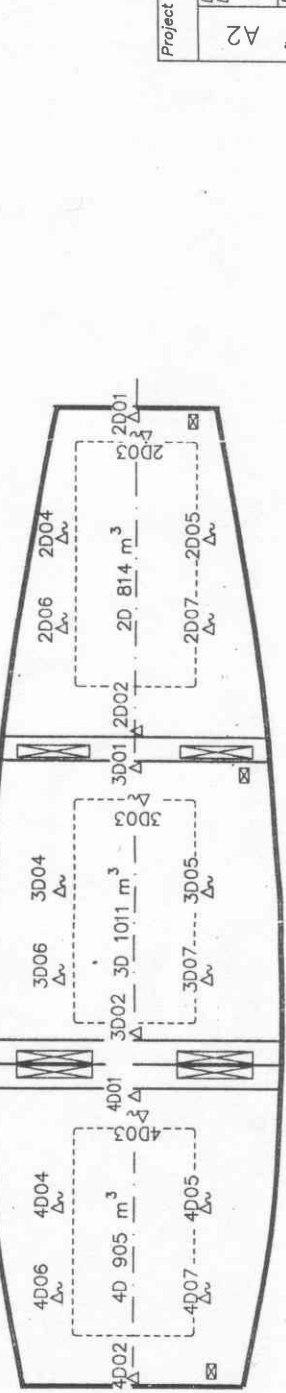
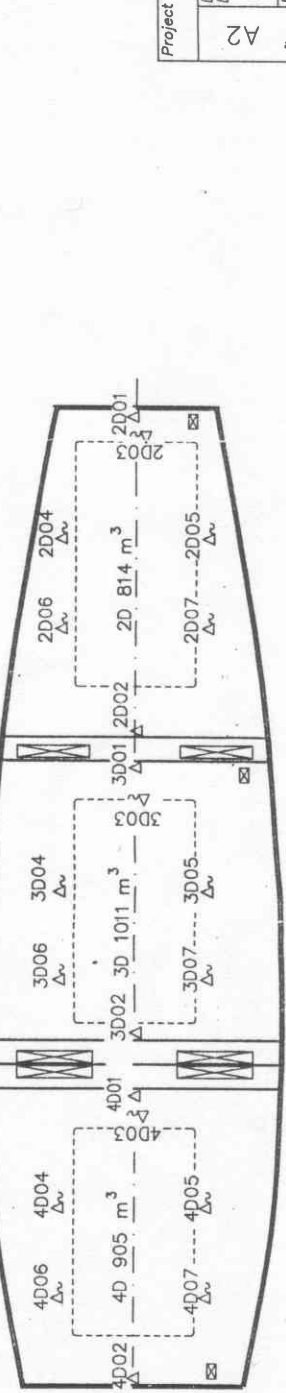
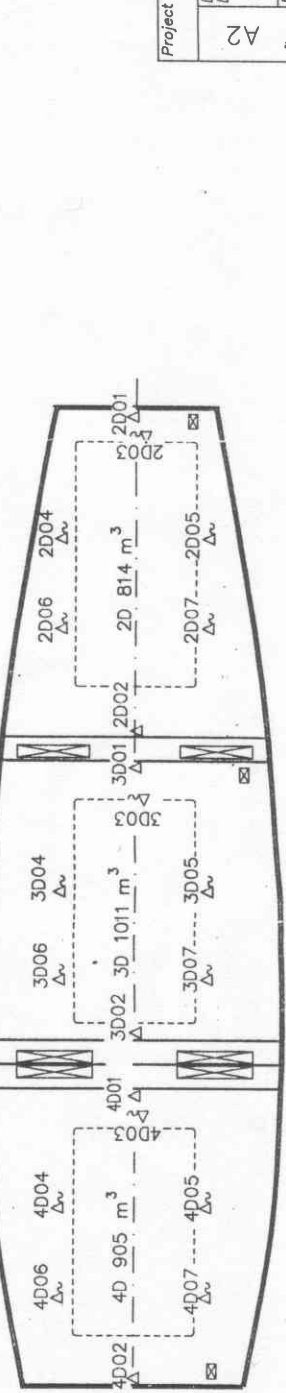
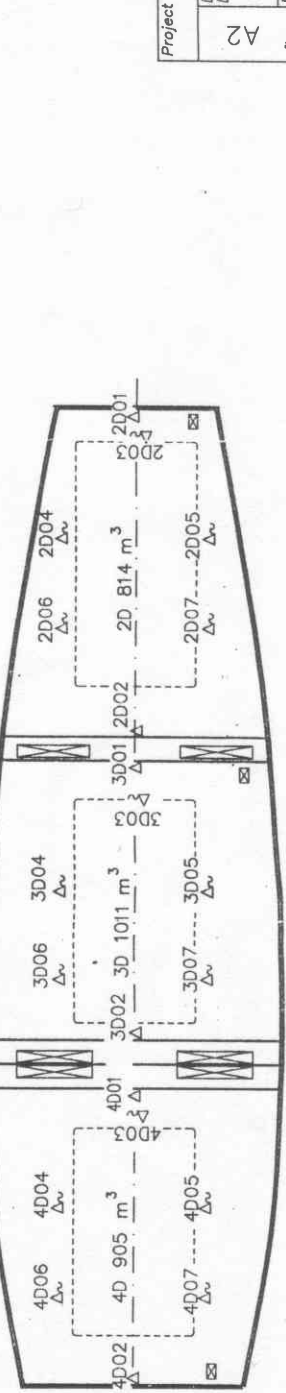
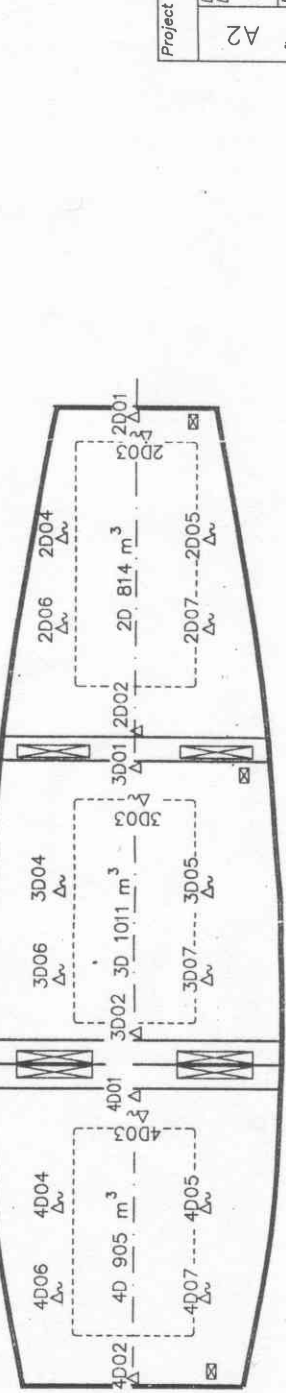
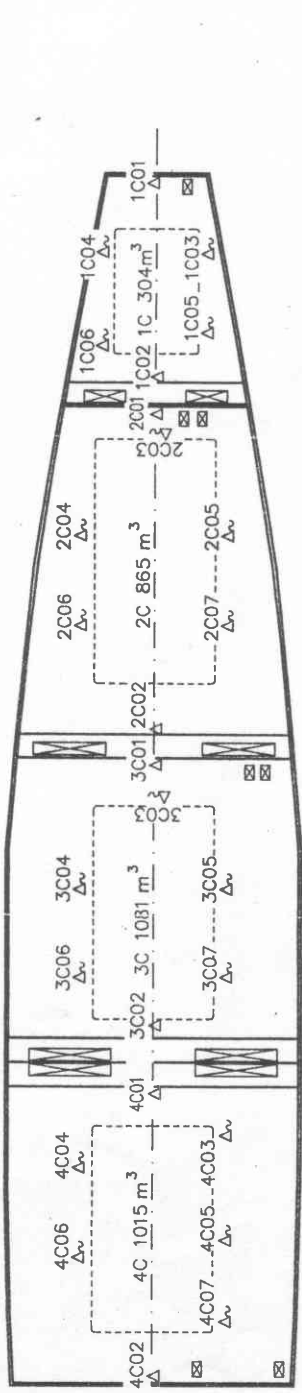
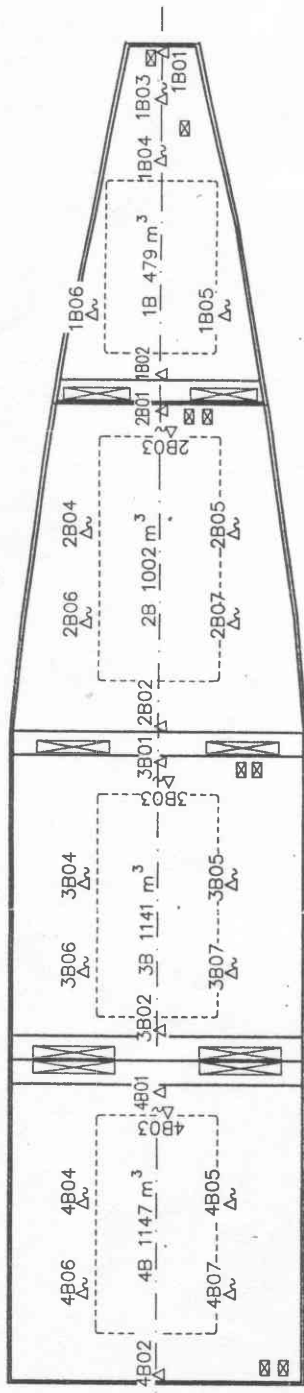
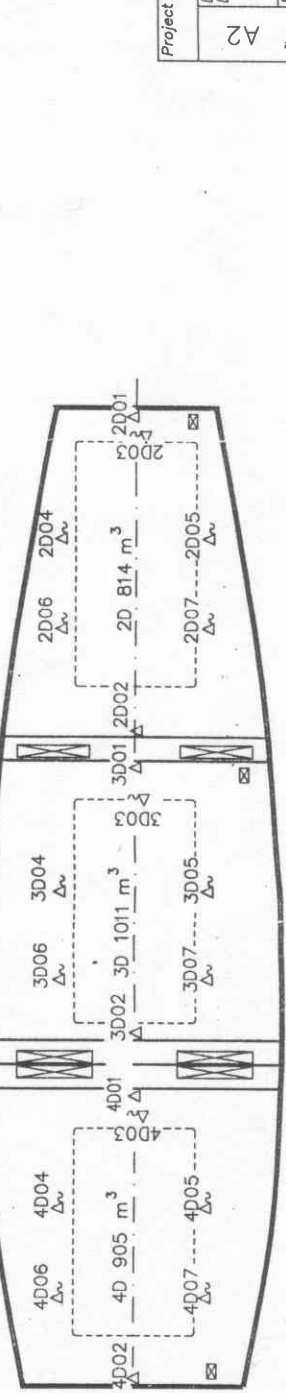
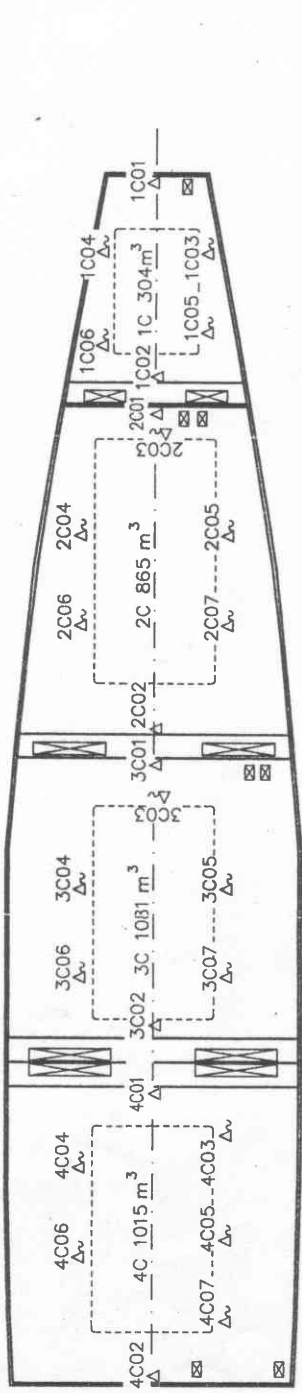
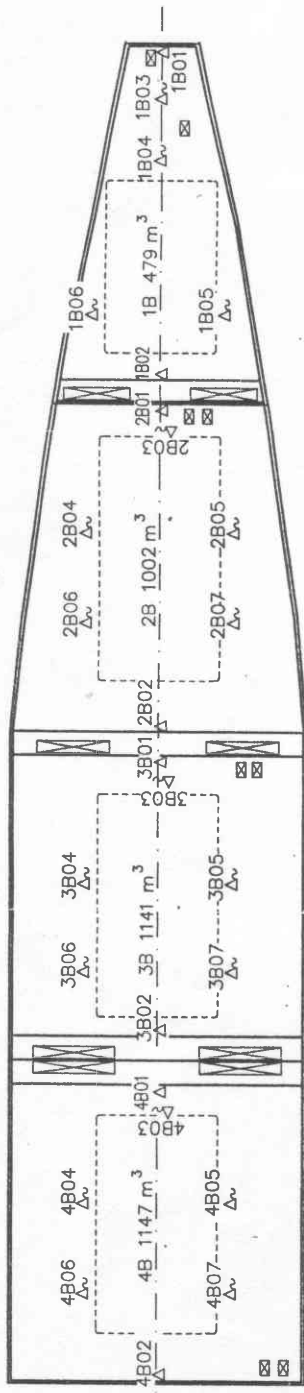
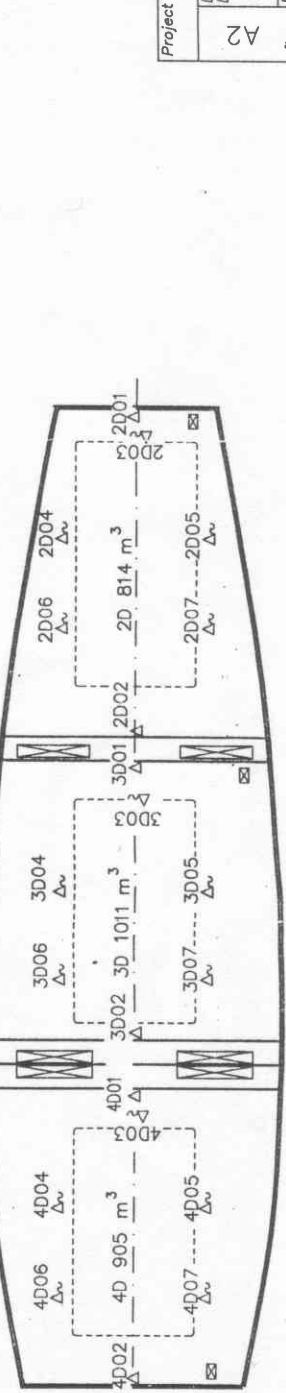
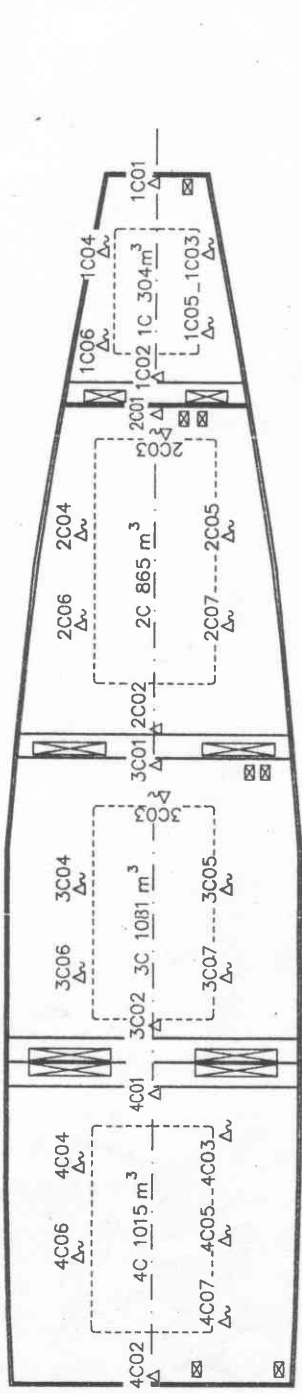
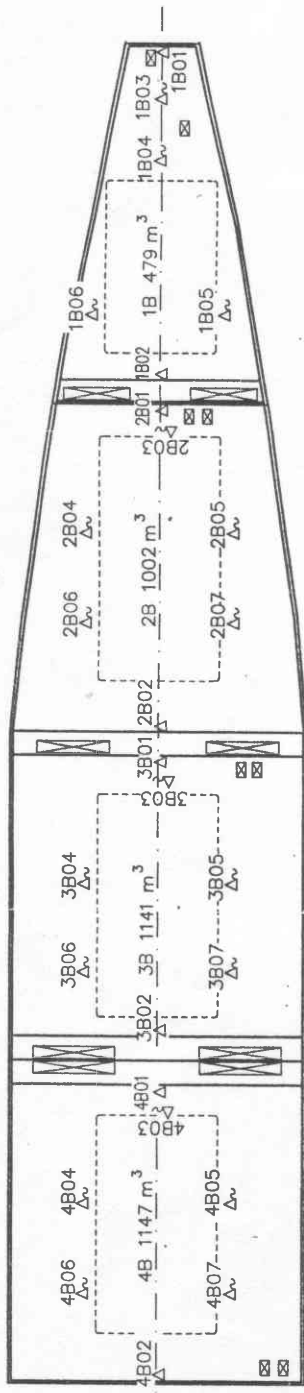
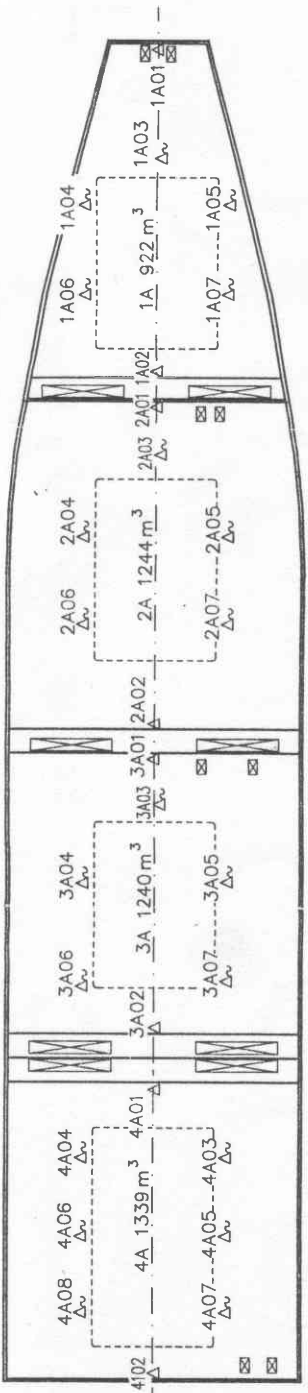
Fruit sensors (portable)

Shall be distributed through out the compartment that all areas of the compartment can

Shall be stowed in recessed boxes to be from damage when not in use.

SYMBOL	QUANTITY	DESCRIPTION
△	32	USDA AIR SENSOR, FIXED
△	80	USDA FRUIT SENSOR, PORTABLE

15,857 m³ REEFER VESSEL



Project: Shikoku Dockyard S-889/890

Drawn: POA/CBE
Date: 97.09.19

Checked: [Signature]
Approved: [Signature]

Template No.: 96442001-114

Part list:

Denomination: LOCATION OF USDA TEMPERATURE SENSORS IN CARGO SPACE

Sheet No.: Sabr P
Drawing No.: 9744100

Drawing size: A2

Sign.