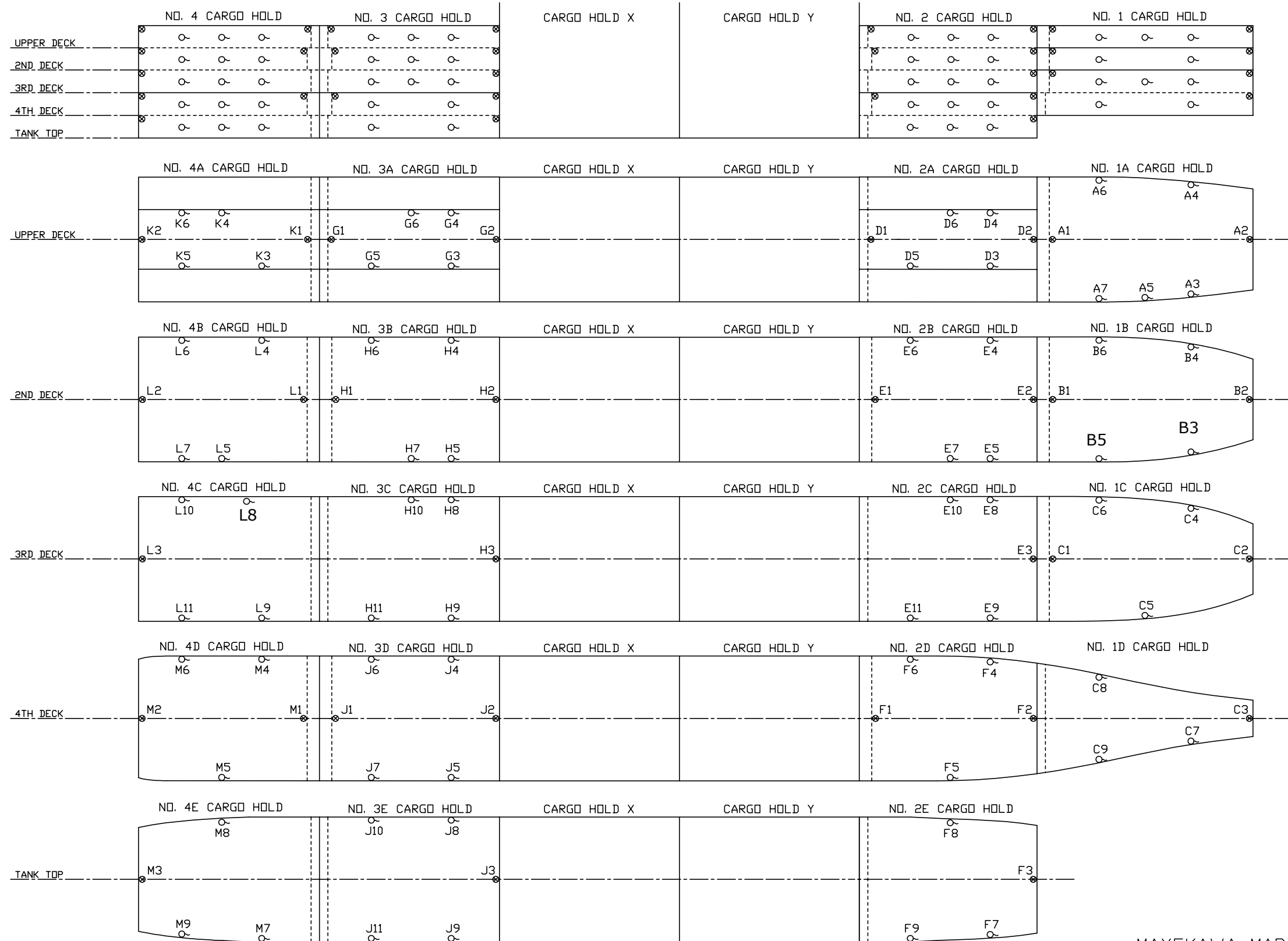


SENSOR ARRANGEMENT FOR U.S.D.A. REPORT **New sensor diagram, AFTER vessel extension**
 Provided 4/12/2012

[Add ID# B3 & B5; change ID K8 to L8 - 11/14/2016]



IMO No. 9179268

PACIFIC REEFER

Hull No. 7107

Updated 4/12/201

[Updated 11/14/2016 - Add ID# B3, B5; change ID K8 to L8]

MAYEKAWA MARINE ENGINEERING CO., LTD.