

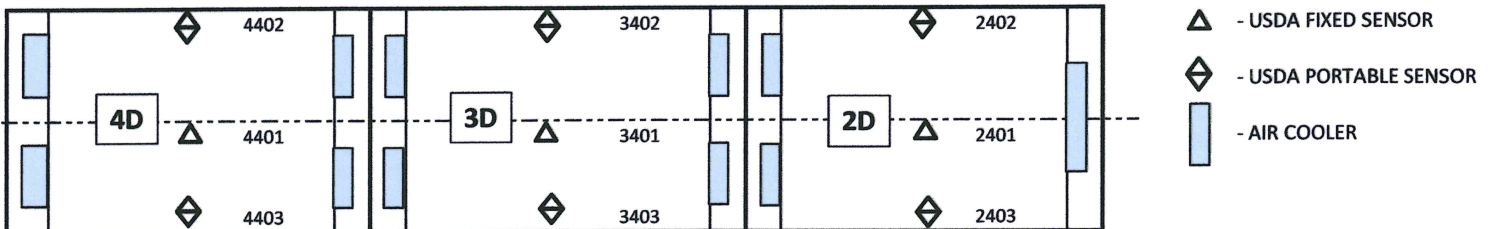
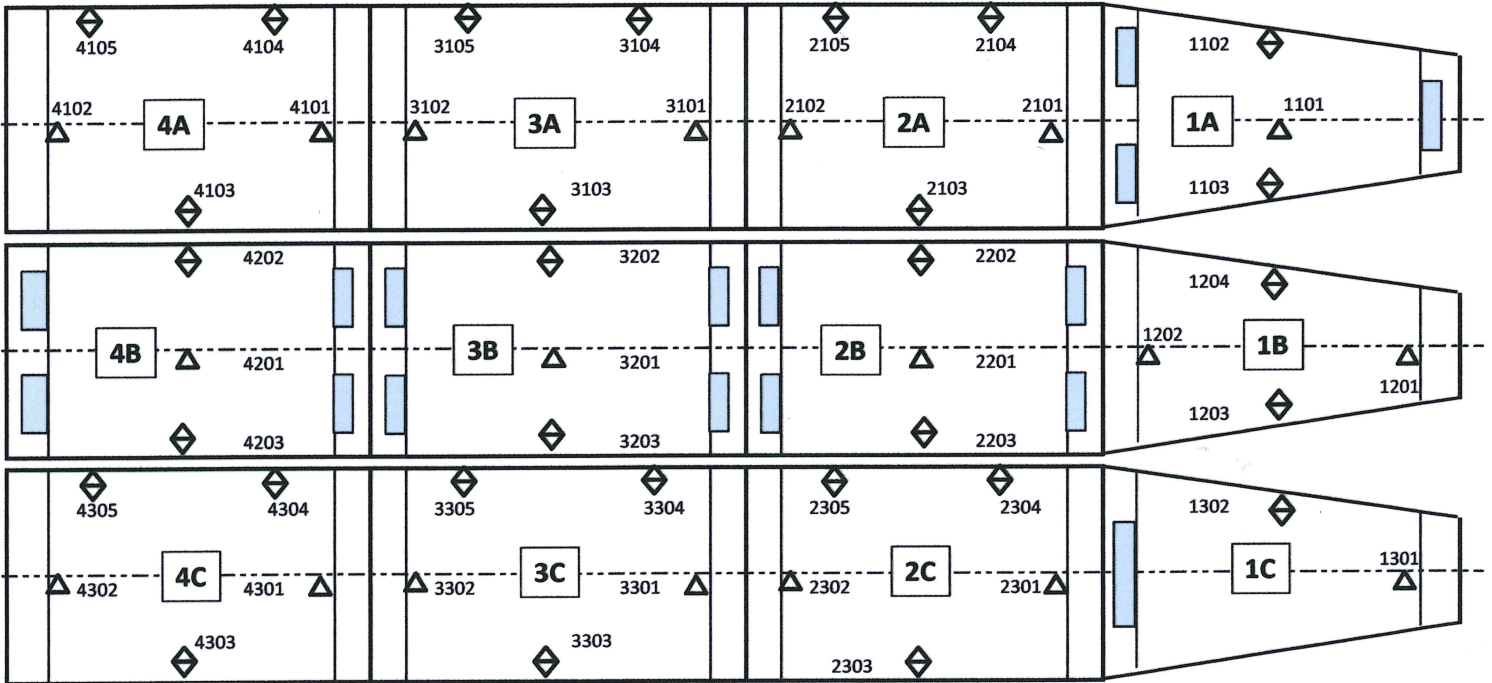
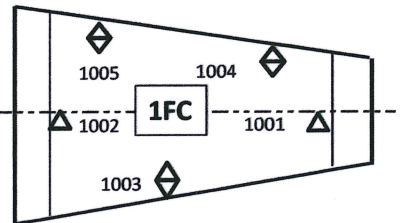
MV Pacific Breeze

IMO 8617926
Brodosplit hull 364

RePCODE rptusdatemp
Vessel Pacific Breeze
Master V.Naumovs
VygSRC 2014.05
VygTC n/a
Date .12.2014

Diagram ver 1 - received 2016/05/31

SECTION	Index	USDA SENSORS						
		1	2	3	4	5		
1	1FC	100...	1001	1002	1003	1004	1005	
2	1A	110...	1101	1102	1103	-	-	14
3	1B	120...	1201	1202	1203	1204	-	
4	1C	130...	1301	1302	-	-	-	
5	2A	210...	2101	2102	2103	2104	2105	
6	2B	220...	2201	2202	2203	-	-	14
7	2C	230...	2301	2302	2303	2304	2305	
8	2D	240...	2401	2402	2403	-	-	
9	3A	310...	3101	3102	3103	3104	3105	
10	3B	320...	3201	3202	3203	-	-	14
11	3C	330...	3301	3302	3303	3304	3305	
12	3D	340...	3401	3402	3403	-	-	
13	4A	410...	4101	4102	4103	4104	4105	
14	4B	420...	4201	4202	4203	-	-	14
15	4C	430...	4301	4302	4303	4304	4305	
16	4D	440...	4401	4402	4403	-	-	

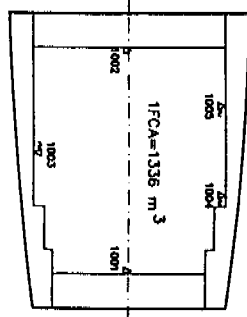
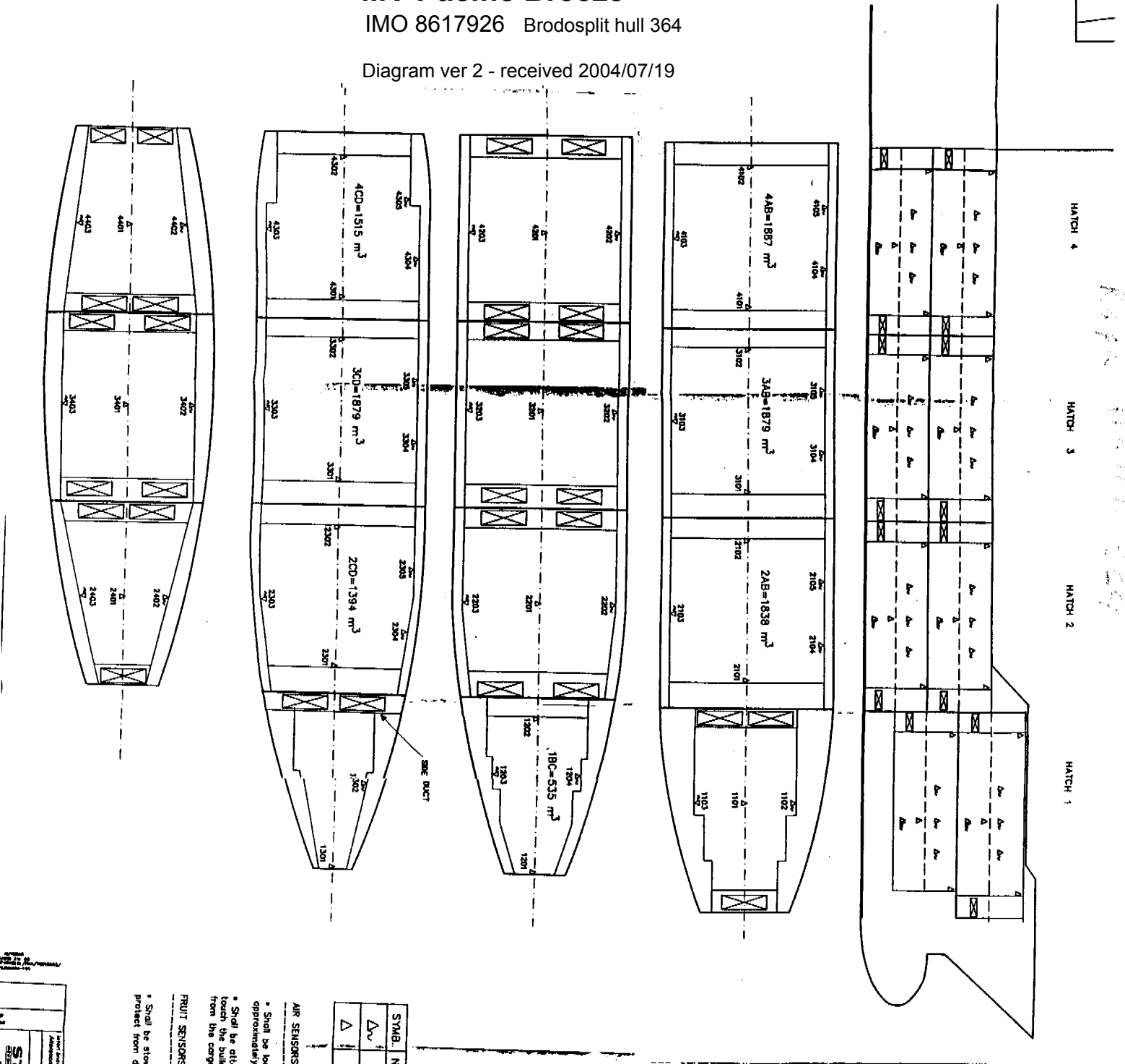


- ▲ - USDA FIXED SENSOR
- ◆ - USDA PORTABLE SENSOR
- ▭ - AIR COOLER

MV Pacific Breeze

IMO 8617926 Brodosplit hull 364

Diagram ver 2 - received 2004/07/19



SYMB.	NO. OF	DESCRIPTION
△	39	USDA FRUIT SENSOR, PORTABLE - DATA LO
△	24	USDA AIR SENSOR, FIXED - DATA LOGGER



AIR SENSORS (fixed)

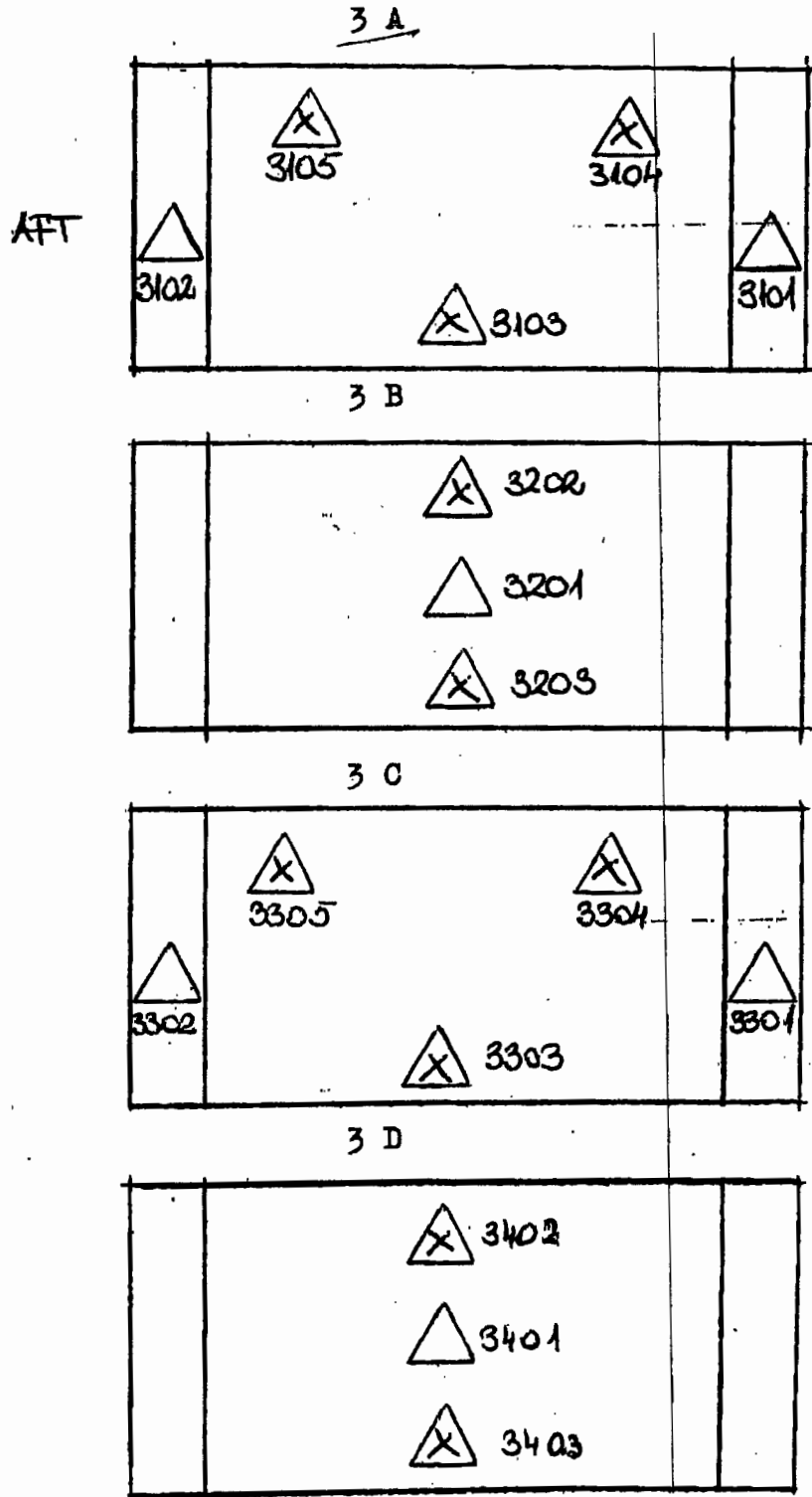
- Shall be located on the center line of the vessel approximately 50 centimeters from the ceiling.
- Shall be attached in such a way that they do not touch the bulkhead and are protected from damage from the cargo.

FRUIT SENSORS (Portable)

- Shall be stowed in recessed compartments to protect from damage when not in use.

Report No. Date: 87.08.21	Report Title: Location of USDA
Prepared by: Checked by:	Approved by: Date:
STAAL	Date:

- a).  USDA AIR SENSOR (FIXED)
- b).  USDA FRUIT SENSOR (PORTABLE)





.1 .1 .1 .1 .0
 .1 .1 .1 .1 .0
 FOREST .0 .1 .0 .0 .0

.0 .0 .0
 .0 .0 .0

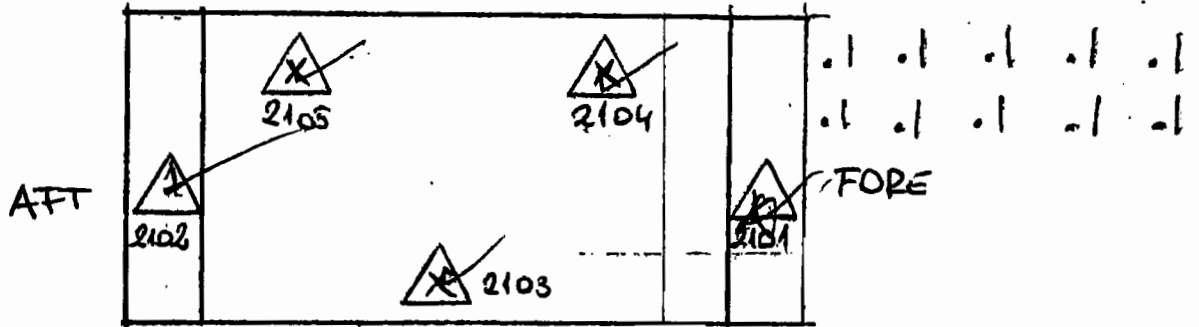
.0 .1 .0 .0 .0
 .0 .1 .0 .0 .0

.1 .0 .0
 .1 .1 .0

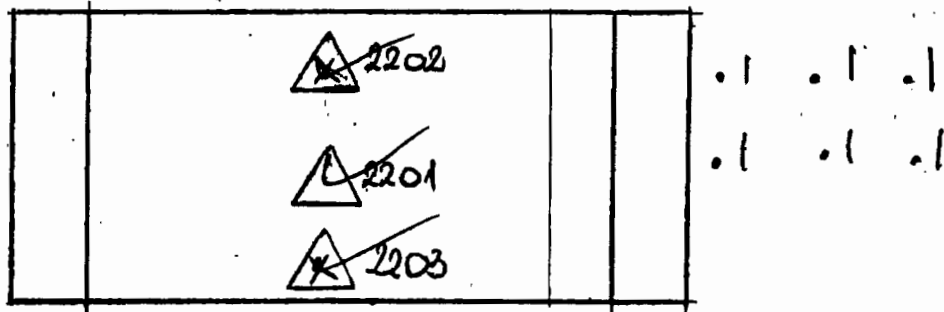
LOCATION OF USDA TEMPERATURE SENSORS

- a).  USDA -AIR SENSOR(FIXED)
- b).  USDA FRUIT SENSOR (PORTABLE)

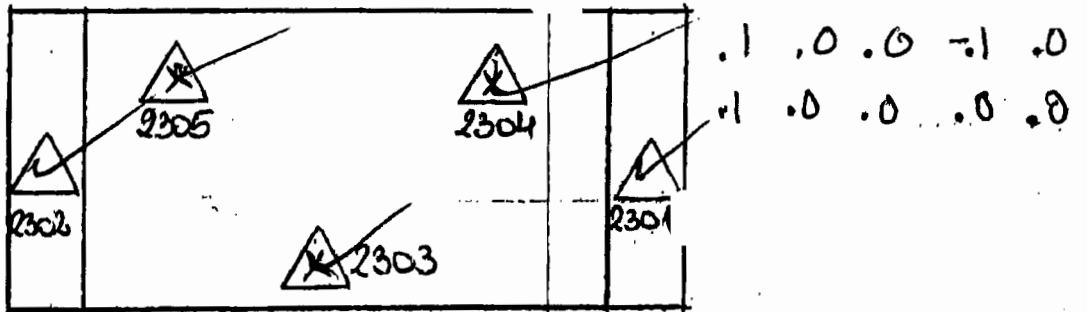
2 A



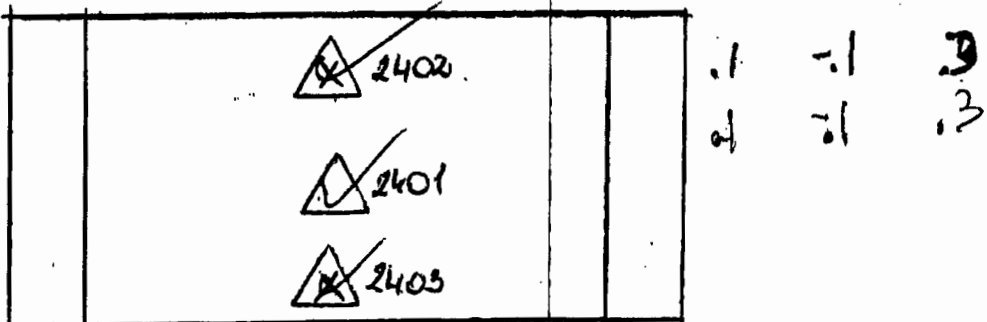
2 B



2 C





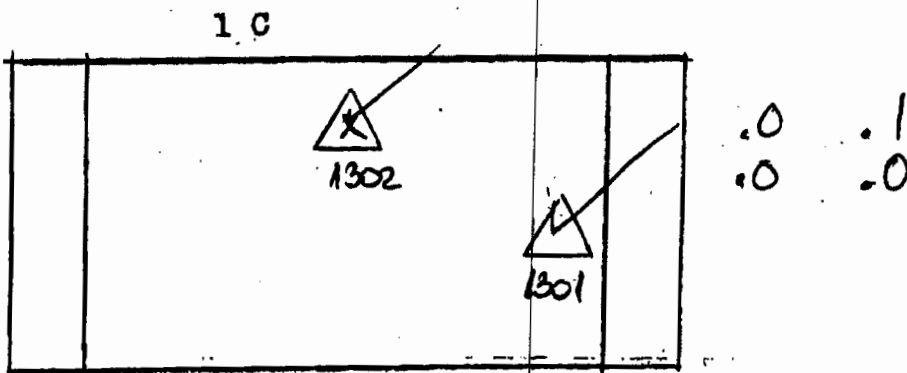
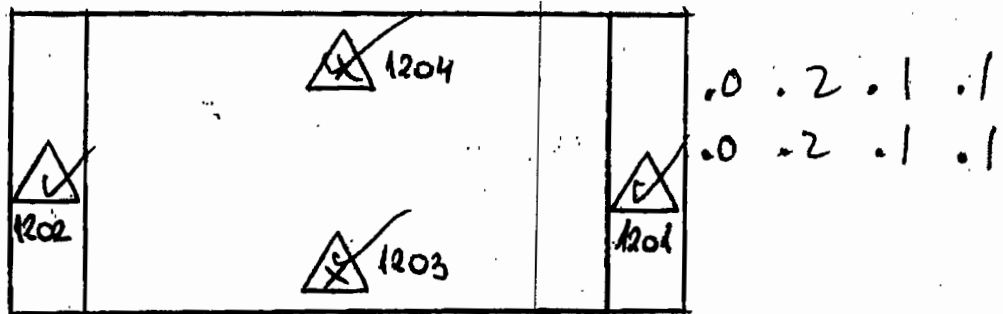
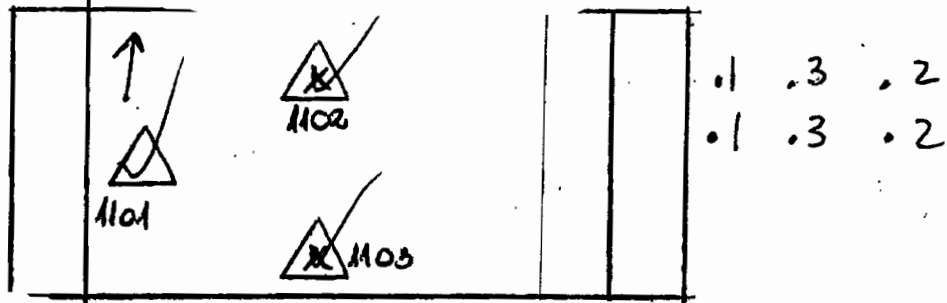
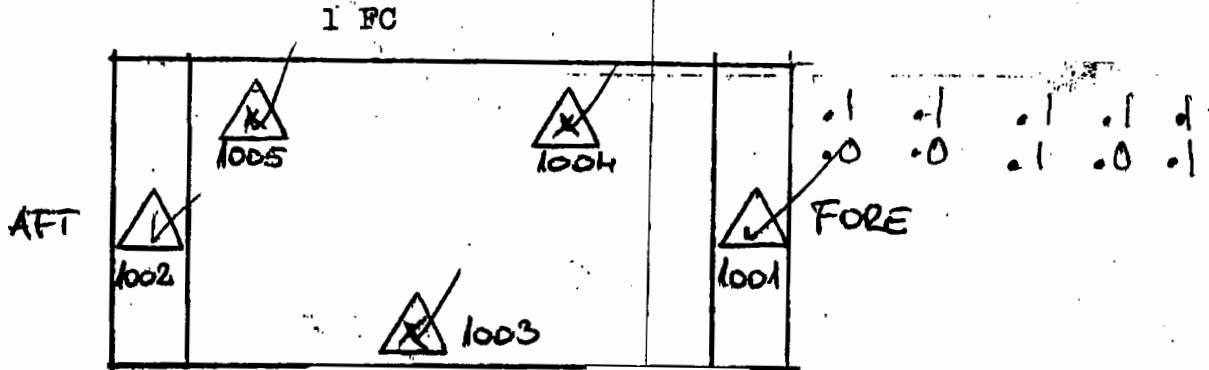
2 D



M/V "PACIFIK FRIGO"

LOCATION OF USDA TEMPERATURE SENSORS

- a).  USDA -AIR SENSOR (FIXED)
- b).  USDA FRUIT SENSOR (PORTABLE)



MEDITERANSKA PLOVIDBA d.d.
ATTN: (komercijala)
POS 2
20260 KORCULA
CROATIA
EUROPE