

M/V Lady Rosebud

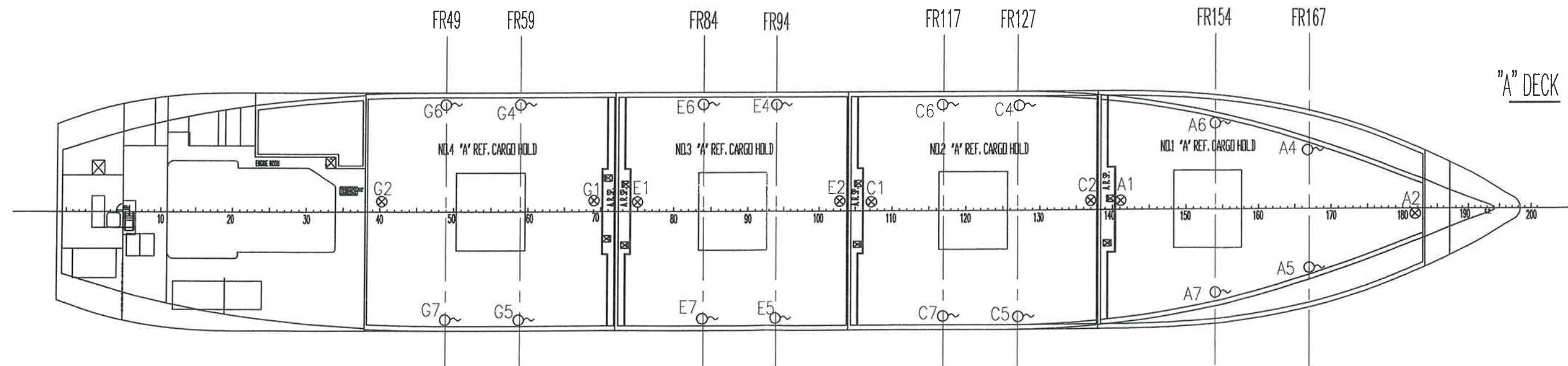
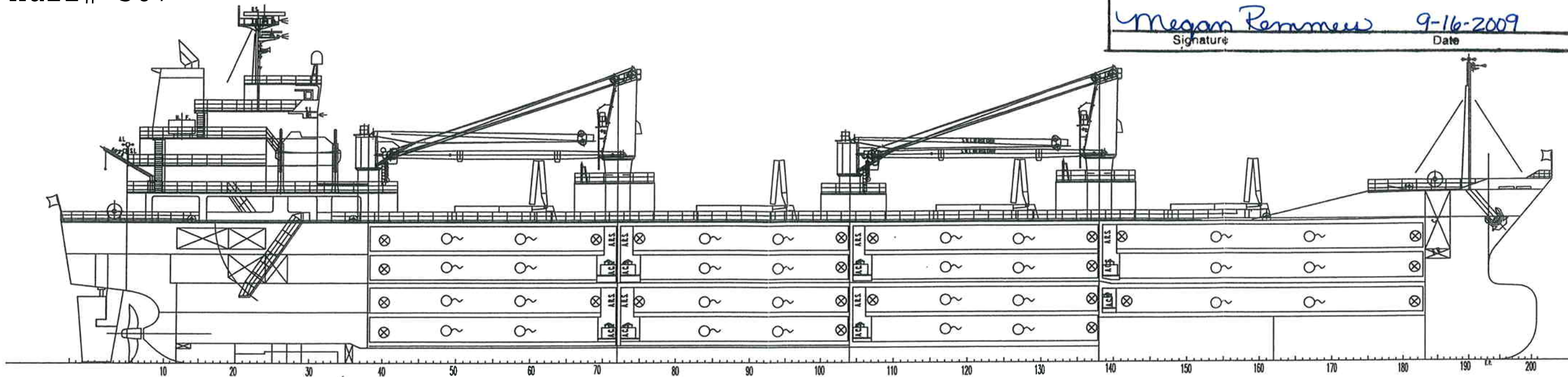
IMO# 9412749

Hull# 507

UNITED STATES DEPARTMENT OF AGRICULTURE
 Animal and Plant Health Inspection Service
 Plant Protection and Quarantine Programs

APPROVED

Megan Remmeu 9-16-2009
 Signature Date



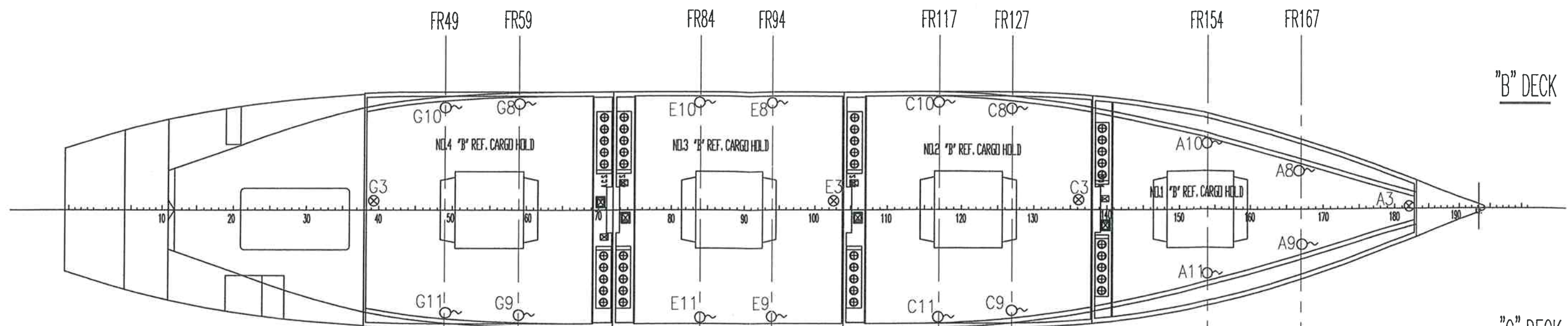
⊗ FIXED SENSOR WITH LEAD CABLE OF 5 METERS
 ~ NON-FIXED SENSOR WITH LEAD CABLE OF 15 METERS

△					Messrs. <i>KITANIHON SHIP BUILDING CO., LTD. SHIP No. 507/508</i>	For <i>SENSOR ARRANGEMENT FOR USDA REPORT (1)</i>			
△					Title <i>SENSOR ARRANGEMENT</i>	Q'ty	Scale <i>1/400</i>	Dwg No. <i>0736 07-W0100</i>	
△					MAYEKAWA 株式会社 前川製作所	Designed By	Drawn By	Checked By	Appr. By
△						Name <i>WATANABE KATAHIRA KIMOTO UMAMICHI</i>	Date <i>20-Oct-2008</i>	<i>20-Oct-2008</i>	<i>21-Oct-2008</i>
Rev No.	Description	Date	By	Appr.					

管理No. X40701

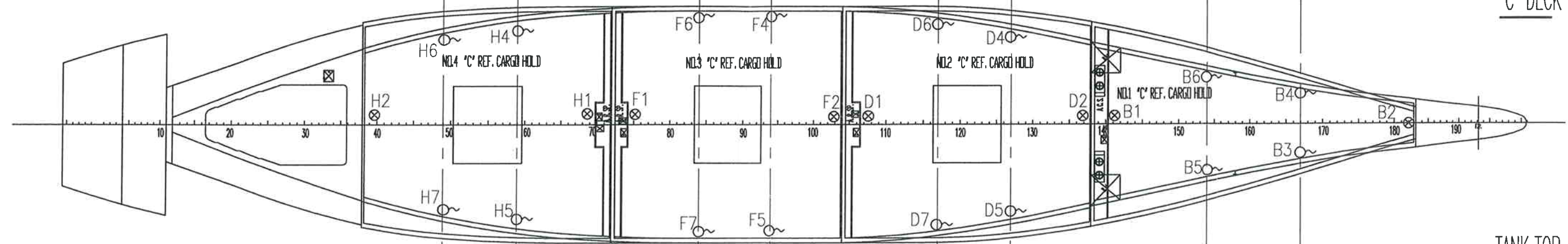
A B C D E F G H J K

5



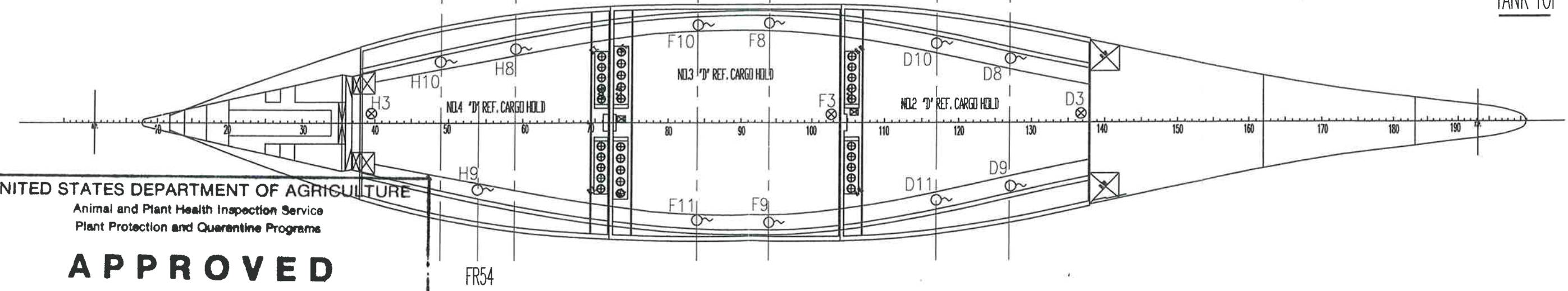
"B" DECK

5



"C" DECK

6



TANK TOP

UNITED STATES DEPARTMENT OF AGRICULTURE
Animal and Plant Health Inspection Service
Plant Protection and Quarantine Programs

APPROVED

Megan Remmes 9-16-2009
Signature Date

⊗ FIXED SENSOR WITH LEAD CABLE OF 5 METERS
○ NON-FIXED SENSOR WITH LEAD CABLE OF 15 METERS

▲					Messrs. <i>KITANIHON SHIP BUILDING CO., LTD. SHIP No.507/508</i>	For <i>SENSOR ARRANGEMENT FOR USDA REPORT (2)</i>				
▲					Title <i>SENSOR ARRANGEMENT</i>	Q'ty	Scale <i>1/400</i>	Dwg No. <i>0736 07-W0200</i>		
▲					MAYEKAWA 株式会社 前川製作所	Designed By	Drawn By	Checked By	Appr. By	
▲						Name <i>WATANABE KATAHIRA KIMOTO UMAMICHI</i>				
Rev No.	Description	Date	By	Appr.		Date	<i>20-Oct-2008</i>	<i>20-Oct-2008</i>	<i>21-Oct-2008</i>	<i>22-Oct-2008</i>

管理 No.X40701