



"Ice Flake" IMO # 8615227
Hull # 230

Holds overview PPECB / USDA sensors

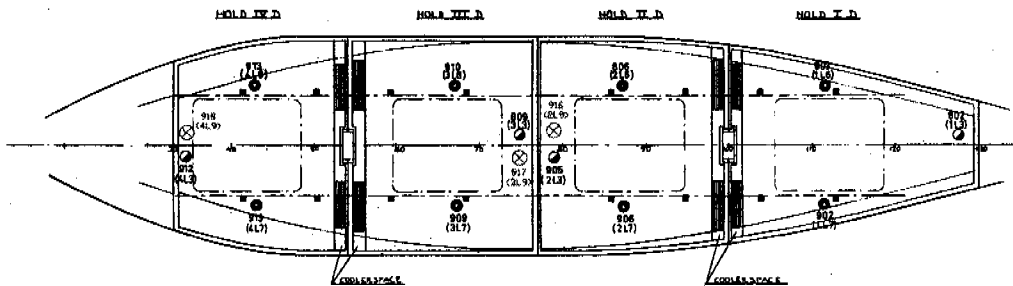
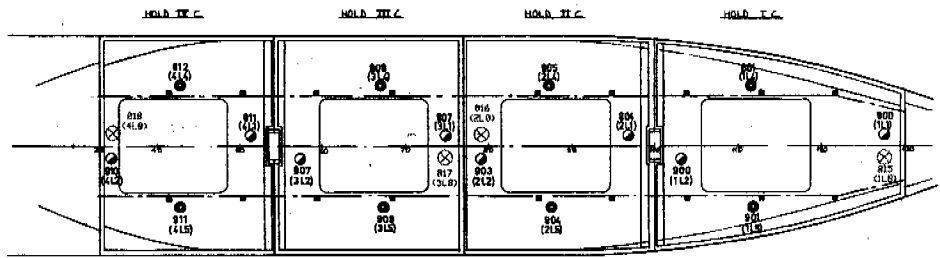
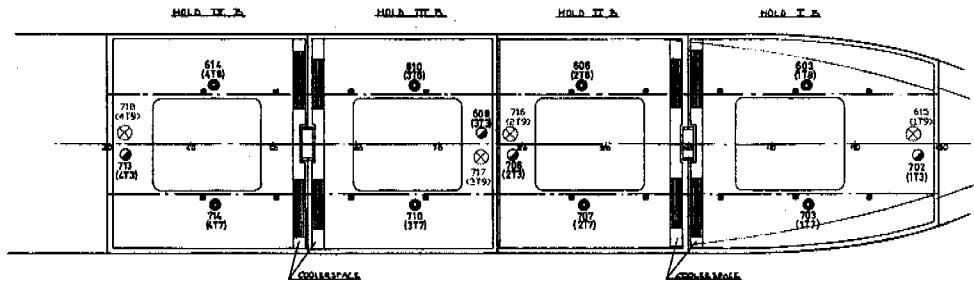
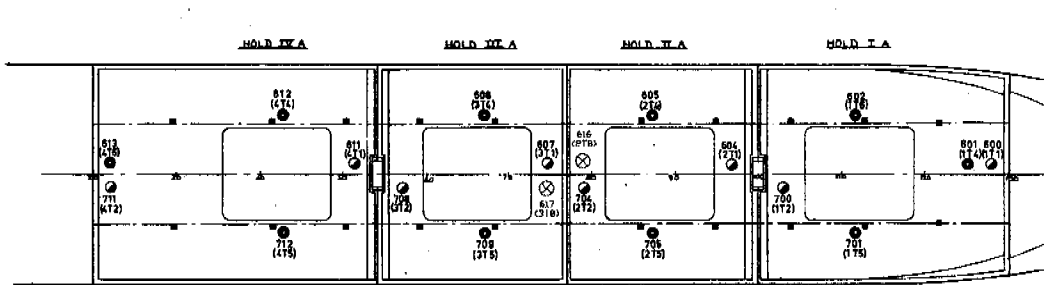
● 612= 0,0 ● 613= 0,0 0,0 =611 ○ ○ 711= 0,0 HOLD No. 4A ● 712= 0,0	● 608= 0,0 0,0 =617 ● ○ ○ 708= 0,0 HOLD No. 3A 0,0 =607 ● 709= 0,0	● 605= 0,0 ● 616= 0,0 0,0 =604 ○ ○ 704= 0,0 HOLD No.2A ● 705= 0,0	● 602= 0,0 0,0 =600 ○ 0,0 =601 ● ○ 700= 0,0 HOLD No. 1A ● 701= 0,0
● 614= 0,0 HOLD No. 4B ○ 713= 0,0 ● 716= 0,0 ● 714= 0,0	● 610= 0,0 0,0 =609 ○ 0,0 =717 ● ● 710= 0,0	● 606= 0,0 HOLD No.2B ○ 706= 0,0 ● 716= 0,0 ● 707= 0,0	● 603= 0,0 HOLD No. 1B 0,0 =702 ○ 0,0 =615 ● ● 703= 0,0
● 812= 0,0 ● 818= 0,0 0,0 =811 ○ ○ 910= 0,0 HOLD No. 4C ● 911= 0,0	● 808= 0,0 0,0 =817 ● ○ ○ 907= 0,0 HOLD No. 3C 0,0 =807 ● 908= 0,0	● 805= 0,0 ● 816= 0,0 0,0 =804 ○ ○ 903= 0,0 HOLD No.2C ● 904= 0,0	● 801= 0,0 0,0 =815 ● 0,0 =800 ○ ○ 900= 0,0 HOLD No. 1C ● 901= 0,0
● 813= 0,0 HOLD No. 4D ○ 912= 0,0 ● 916= 0,0 ● 913= 0,0	● 810= 0,0 0,0 =809 ○ 0,0 =917 ● ● 909= 0,0	● 806= 0,0 HOLD No.2D ○ 905= 0,0 ● 916= 0,0 ● 906= 0,0	● 803= 0,0 HOLD No. 1D 0,0 =802 ○ ● 902= 0,0

○ Fixed Sensor
● Non Fixed Sensor

AI Overview 1 | AI Overview 2 | **PPECB / USDA holds** | Other sensors

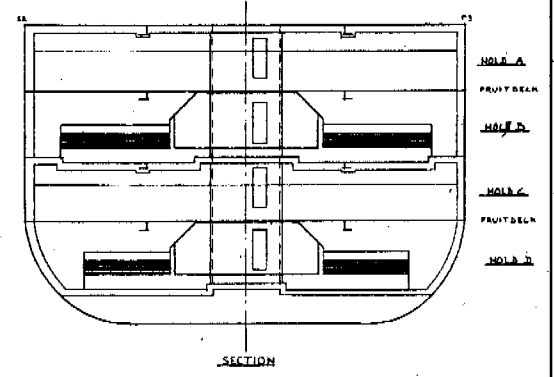
...	Date	Time	Status	Number	Message text
-----	------	------	--------	--------	--------------

Alt + F1: Log in / out F2: Main F3: Alarms F4: Trending F5: System F6: Sensor Overview F10: Reports F11: Print Screen F12: RESET



- PILLAR
- FIELD SENSORS FOR MEASURING AIR TEMPERATURE (DRAW 633.1.516-L-05)
- ⊗ REMOVABLE SENSORS WITH 30 M. (12M) OF CABLE FOR MEASURING CARGO TEMPERATURE (DRAW 633.1.516-L-06)
- ⊗ MOVABLE SENSOR WITH 12 MTR. CABLE FOR MEASURING CARGO TEMPERATURE.

Ice Flake
IMO# 8615227
Hull # 230



- HOLD I A 783 M3
- HOLD I B 482 M3
- HOLD I C 570 M3
- HOLD I D 433 M3
- HOLD II A 481 M3
- HOLD II B 872 M3
- HOLD II C 423 M3
- HOLD III A 328 M3
- HOLD III B 323 M3
- HOLD III C 418 M3
- HOLD III D 463 M3
- HOLD IV A 811 M3
- HOLD IV B 418 M3
- HOLD IV C 443 M3
- HOLD IV D 617 M3
- HOLD IV E 460 M3

SCALE: 1:500	DATE: 1/80	DESIGNER: M.C. 31	NOELWERT SM 430/731
DESCRIPTION: POSITIONS OF TEMPERATURE SENSORS TO MEET U.S.D.A. REQUIREMENTS			
A1		633.1.516-P-06	DATE: 1/80
DRAWN BY: M.C. 31			
CHECKED BY: M.C. 31			
APPROVED BY: M.C. 31			