

"Ice Field"

IMO# 8615239

Hull # 231

Holds overview PPECB / USDA sensors

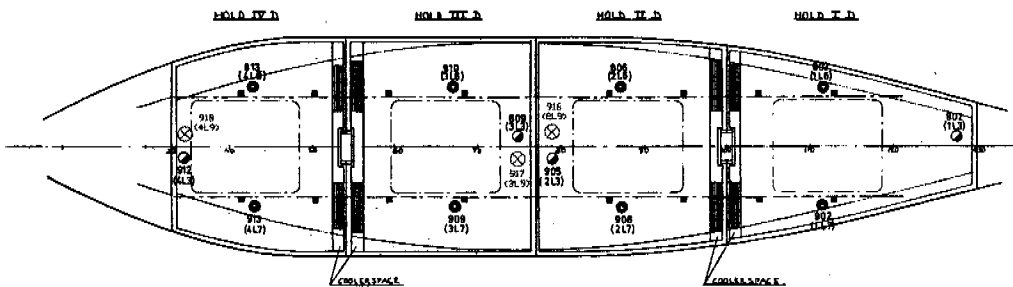
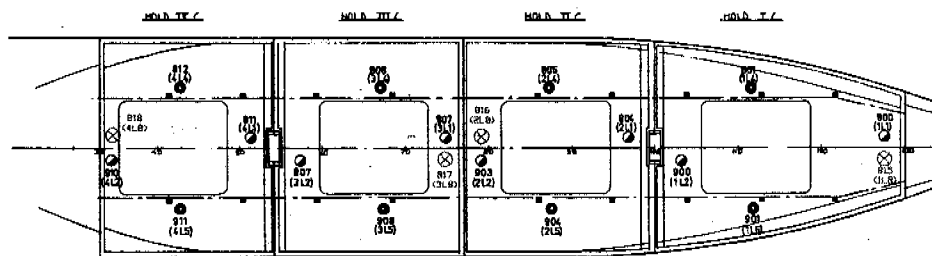
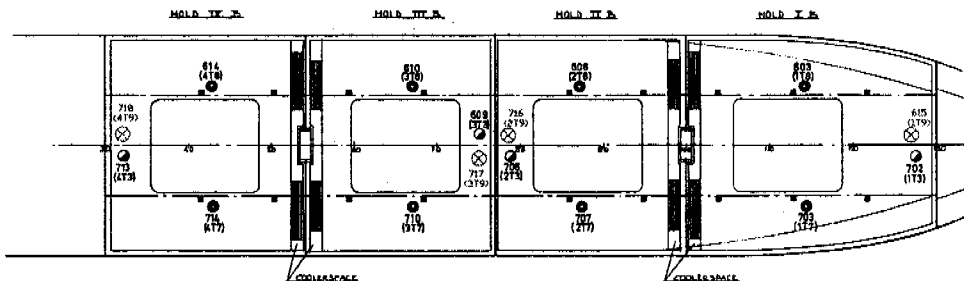
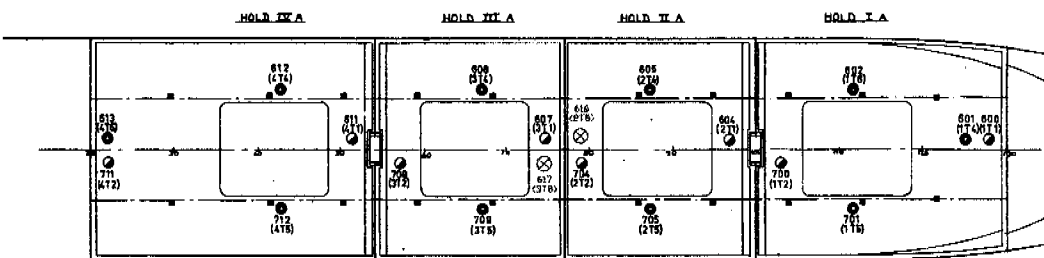
| | | | |
|-----------------------------------------------------------------------------------------|-----------------------------------------------------------------------------------------|----------------------------------------------------------------------------------------|---------------------------------------------------------------------------------------|
| ● 612= 0,0 ● 613= 0,0 0,0 =611 ○ ○ 711= 0,0 HOLD No. 4A ● 712= 0,0 | ● 608= 0,0 0,0 =617 ● ○ ○ 708= 0,0 HOLD No. 3A 0,0 =607 ● 709= 0,0 | ● 605= 0,0 ● 616= 0,0 0,0 =604 ○ ○ 704= 0,0 HOLD No.2A ● 705= 0,0 | ● 602= 0,0 0,0 =600 ○ 0,0 =601 ● ○ 700= 0,0 HOLD No. 1A ● 701= 0,0 |
| ● 614= 0,0 HOLD No. 4B ○ 713= 0,0 ● 718= 0,0 ● 714= 0,0 | ● 610= 0,0 0,0 =609 ○ 0,0 =717 ● ● 710= 0,0 | ● 606= 0,0 HOLD No.2B ○ 706= 0,0 ● 716= 0,0 ● 707= 0,0 | ● 603= 0,0 HOLD No. 1B 0,0 =702 ○ 0,0 =615 ● ● 703= 0,0 |
| ● 812= 0,0 ● 818= 0,0 0,0 =811 ○ ○ 910= 0,0 HOLD No. 4C ● 911= 0,0 | ● 808= 0,0 0,0 =817 ● ○ 0,0 =807 ○ ○ 907= 0,0 HOLD No. 3C ● 908= 0,0 | ● 805= 0,0 ● 816= 0,0 0,0 =804 ○ ○ 903= 0,0 HOLD No.2C ● 904= 0,0 | ● 801= 0,0 0,0 =815 ● 0,0 =800 ○ ○ 900= 0,0 HOLD No. 1C ● 901= 0,0 |
| ● 813= 0,0 HOLD No. 4D ○ 912= 0,0 ● 918= 0,0 ● 913= 0,0 | ● 810= 0,0 0,0 =809 ○ 0,0 =917 ● ● 909= 0,0 | ● 806= 0,0 HOLD No.2D ○ 905= 0,0 ● 916= 0,0 ● 906= 0,0 | ● 803= 0,0 HOLD No. 1D 0,0 =802 ○ ● 902= 0,0 |

- Fixed Sensor
- Non Fixed Sensor

AI Overview 1 | AI Overview 2 | PPECB / USDA holds | Other sensors

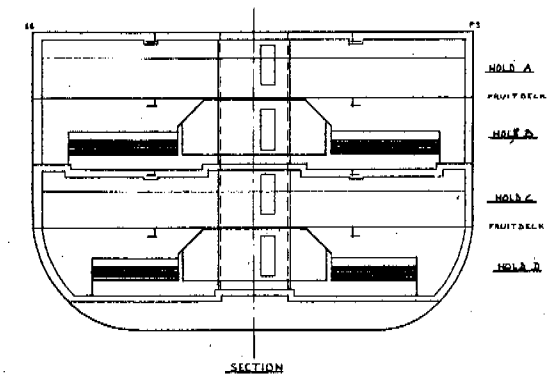
| ... | Date | Time | Status | Number | Message text |
|-----|------|------|--------|--------|--------------|
|-----|------|------|--------|--------|--------------|

Alt + F1: Log in / out F2: Main F3: Alarms F4: Trending F5: System **F6: Sensor Overview** F10: Reports F11: Print Screen F12: RESET



- PILLAR
- FIXED SENSORS FOR MEASURING AIR TEMPERATURE (DRAW 633.1.516.1.10)
- FLOWABLE SENSORS WITH 38 FT. (12M) OF CABLE FOR MEASURING CARGO TEMPERATURE (DRAW 633.1.516.1.10)
- ⊗ MOVABLE SENSOR WITH 12 MTR. CABLE FOR MEASURING CARGO TEMPERATURE.

Ice Field
 IMO # 8615239
 Hull # 231



- HOLD I A 958 P3
- HOLD I B 883 P3
- HOLD I C 370 P3
- HOLD II A 421 P3
- HOLD II B 419 P3
- HOLD II C 413 P3
- HOLD III A 338 P3
- HOLD III B 333 P3
- HOLD IV A 416 P3
- HOLD IV B 438 P3
- HOLD V A 463 P3
- HOLD V B 441 P3
- HOLD VI A 441 P3
- HOLD VI B 407 P3
- HOLD VII A 450 P3

| | | | | |
|-----------------------------------------------------------------------------------------------------------------------------------------------------------------------|-------------|----------------|------------------------------------|-------------------------------------------------------|
| SCALE: 1:500 | DATE: 11/90 | DESIGNER: H.S. | NO. 24 | MODE FOR: YSSELWEST SW 430/231 |
| DESCRIPTION: POSITIONS OF TEMPERATURE SENSORS TO MEET U.S.A. REQUIREMENTS | | | | |
| 2 17-84-86 H.C. POSITION SENSORS HELD 1B 3 07-82-86 H.C. EXTRA SENSORS HELD 1B 3 14-79-85 H.C. POSITION EXTRA USDA SENSORS A 10-80-85 H.C. EXTN USDA SENSORS | | | NO. 633.1.516-P-06 SHEET NO. A1 | DRAWING NO. 633.1.516.1.10 SHEET NO. 211.1.216/117 |
| NO. | DATE | NO. | NO. | DESCRIPTION/ALTERATION |