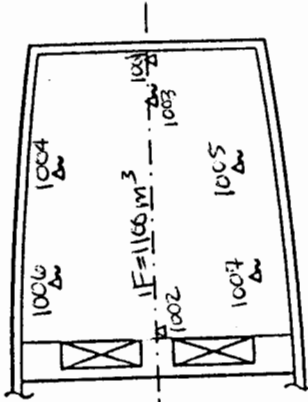


HATCH 2

HATCH 3

HATCH 4



AIR SENSORS (FIXED)

SHALL BE LOCATED ON THE CENTERLINE OF THE VESSEL, APPROXIMATELY 30 CENTIMETERS FROM THE CEILING. SHALL BE ATTACHED IN SUCH A WAY THAT THEY DON'T TOUCH THE BULKHEAD AND ARE PROTECTED FROM DAMAGE CAUSED BY THE CARGO.

FRUIT SENSORS (PORTABLE)

SHALL BE STOWED IN RECESSED BOXES TO BE PROTECTED FROM DAMAGE WHEN NOT IN USE.

PROPOSAL OF BOXES FOR USDA FRUIT SENSORS. SEE DRAWING F-22731.

SYMBOL	QUANTITY	DESCRIPTION
△	30	USDA AIR SENSOR, FIXED
△	74	USDA FRUIT SENSOR, PORTABLE

UNITED STATES DEPARTMENT OF AGRICULTURE
Animal and Plant Health Inspection Service
Plant Protection and Quarantine

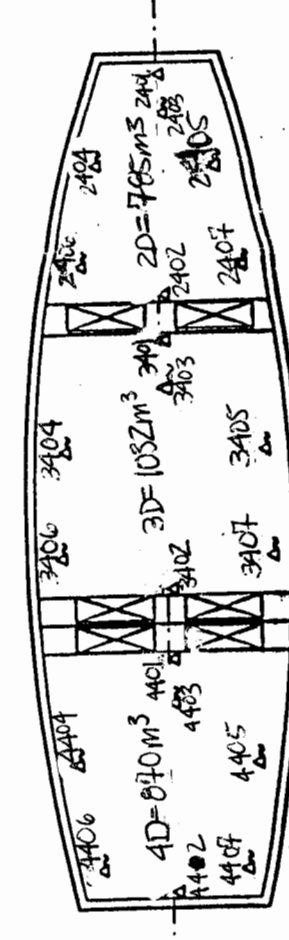
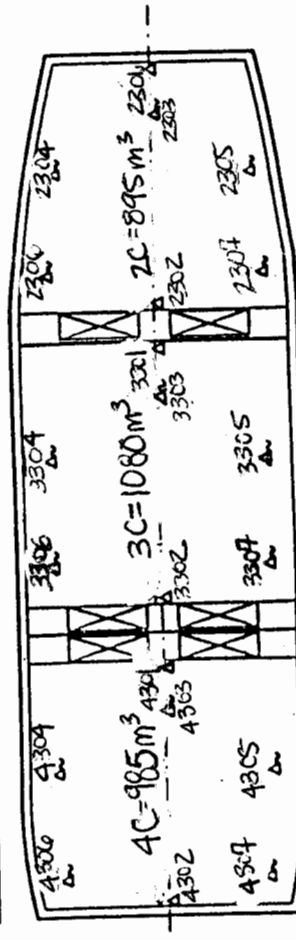
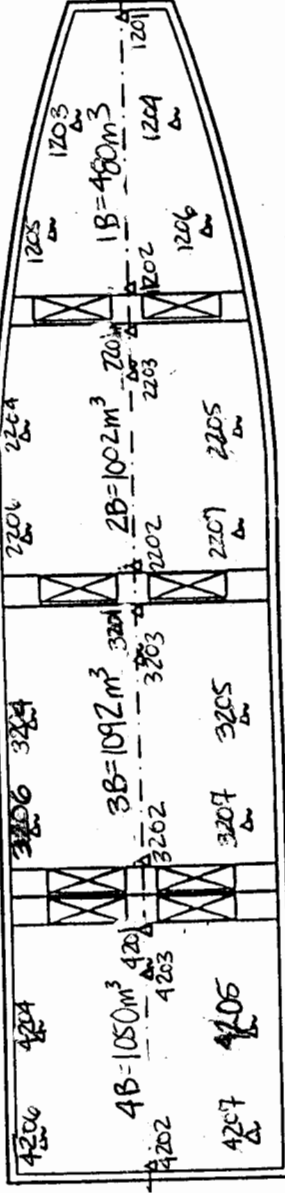
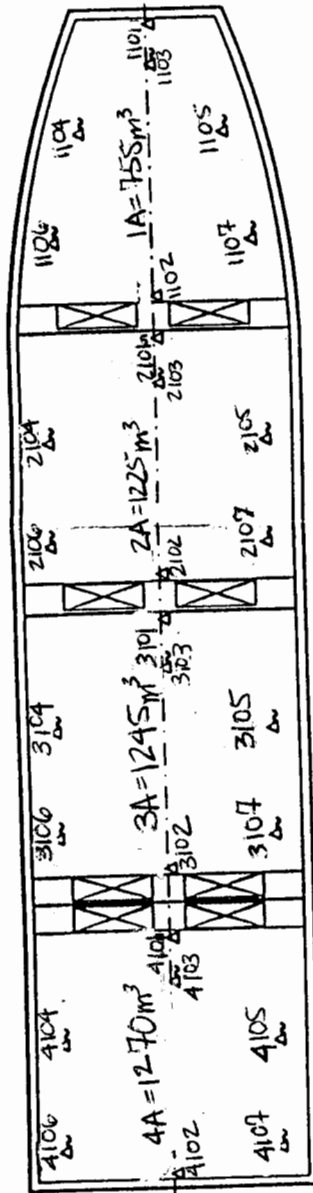
APPROVED

SNO
14866 m³ REEFER VESSEL
YARD: SHIKOKU, JAPAN
STAL'S NO: B-9673.0076

Import and Origin Code Attention No.	Shipped Drawn	Inspected Checked	Condition Approved	Address Archive No.	DF	UGF
	89.12.11	6/1	1/1			

LOCATION OF USDA
TEMPERATURE SENSORS
IN CARGO SPACE

9673.0076-14A



STAL Refrigeration