

● —NON FIXED
 ● —FIXED SENSOR

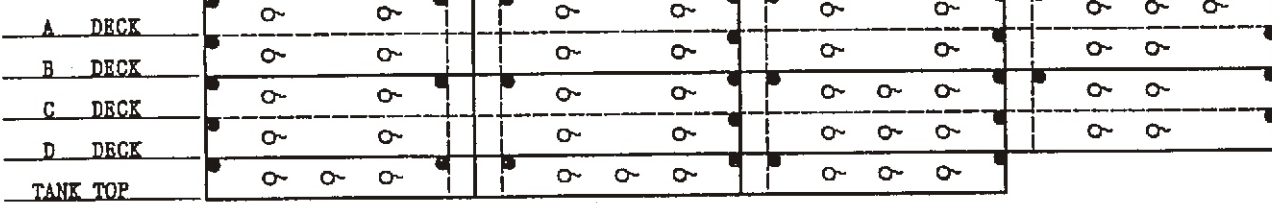
Updated sensor diagram
 added 4/11/2014

M/V CHAITEN SENSOR ARRANGEMENT

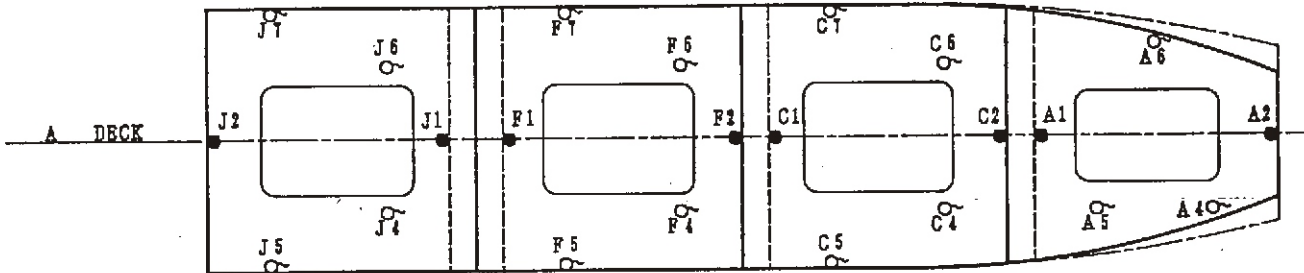
MV Chaiten
 IMO #8700230
 Hull 2526
 (Kurushima)

SENSOR ARRANGEMENT FOR U. S. D. A. REPORT

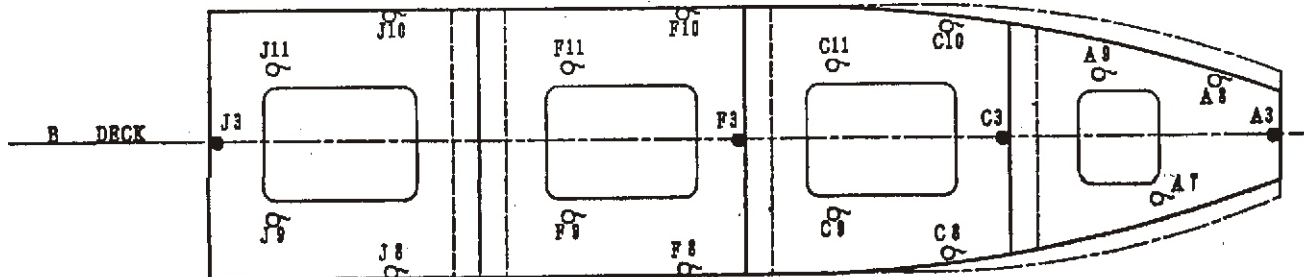
UPPER DECK



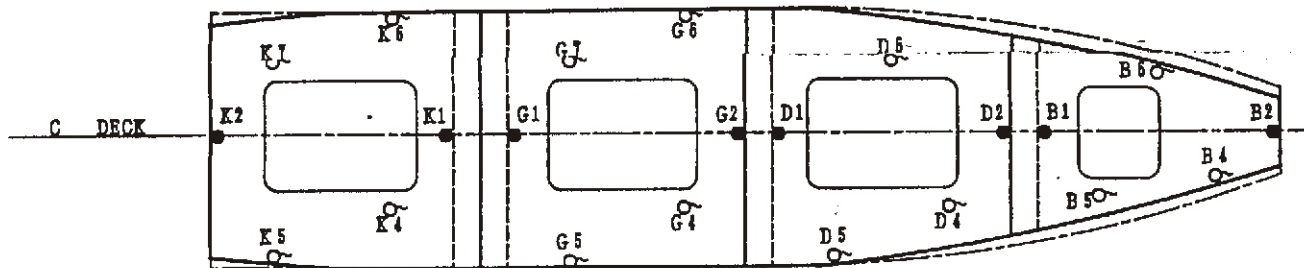
NO 4A CARGO HOLD NO 3A CARGO HOLD NO 2A CARGO HOLD NO 1A CARGO HOLD



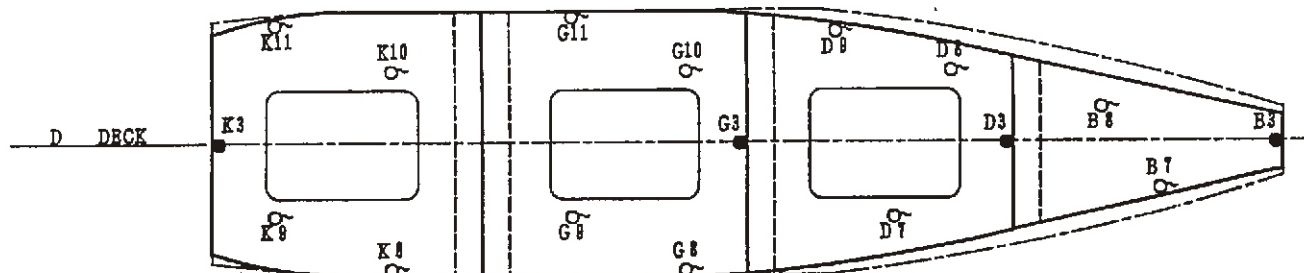
NO 4B CARGO HOLD NO 3B CARGO HOLD NO 2B CARGO HOLD NO 1B CARGO HOLD



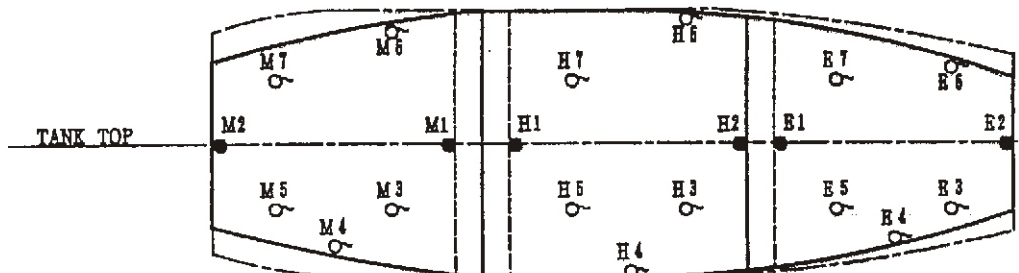
NO 4C CARGO HOLD NO 3C CARGO HOLD NO 2C CARGO HOLD NO 1C CARGO HOLD



NO 4D CARGO HOLD NO 3D CARGO HOLD NO 2D CARGO HOLD NO 1D CARGO HOLD



NO 4E CARGO HOLD NO 3E CARGO HOLD NO 2E CARGO HOLD

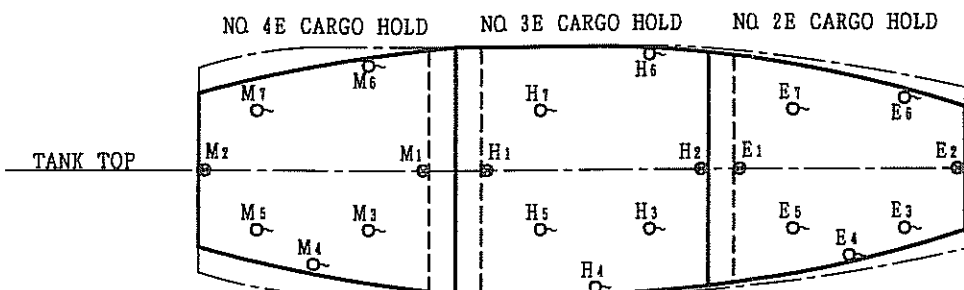
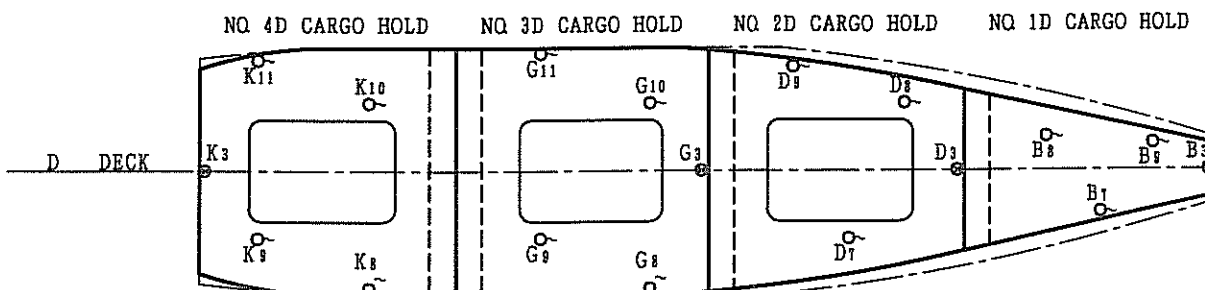
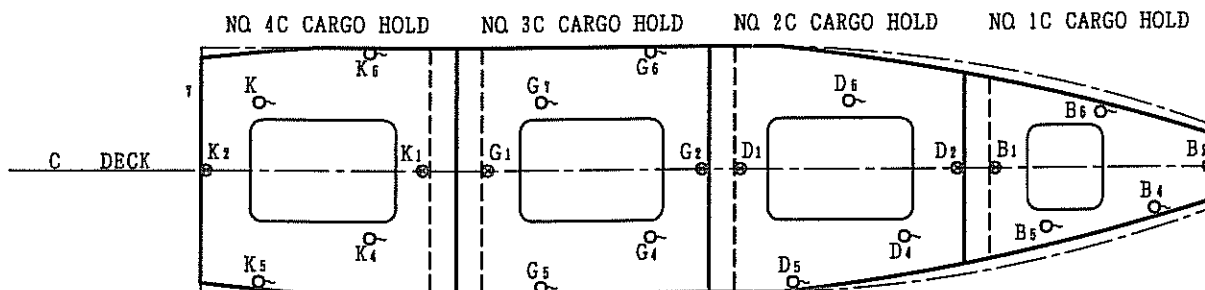
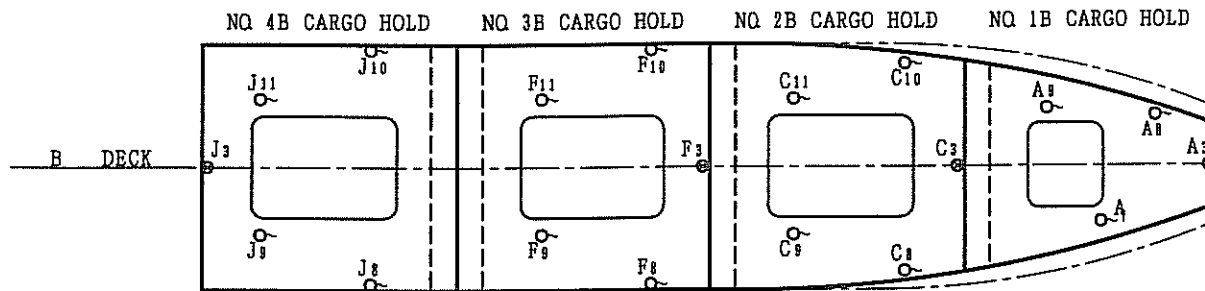
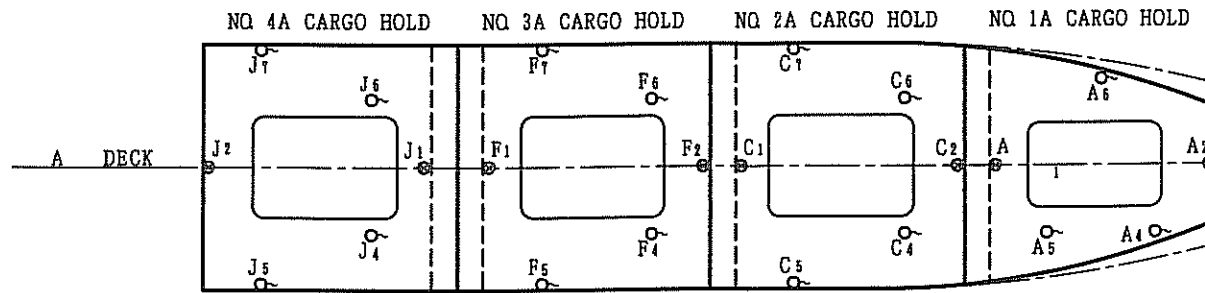
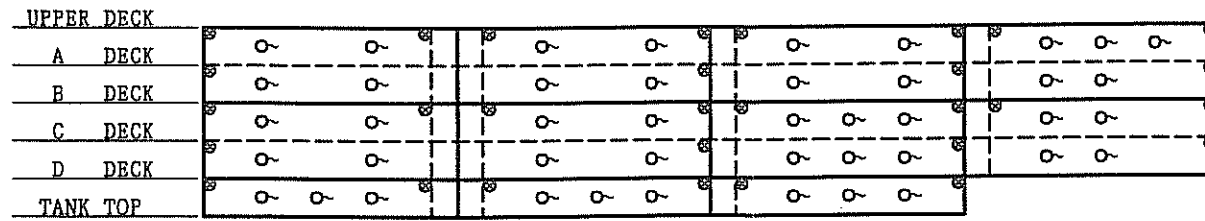


- --- FIXED SENSOR
- --- NON-FIXED SENSOR

Chaiten
Hull No. 2526

SENSOR ARRANGEMENT FOR USDA REPORT

M/V Chaiten
Hull #2526



⊗ -- FIXED SENSOR
○ -- NON-FIXED SENSOR

△					MESSRS.	Q'ty	SCALE NS.	DRAWING NO. M090190010		
△					FOR M/V CHAITEN	DESIGNED	DRAWN	CHECKED	APPROVED	SHEET
△					DRAWING OF SENSOR ARRANGEMENT FOR USDA REPORT	NAME				
△					MAYEKAWA MFG CO., LTD.	DATE				
REVIEW NO.	DESCRIPTION	DATE	DRAWN	APPROVED	MAYEKAWA TOKYO JAPAN					