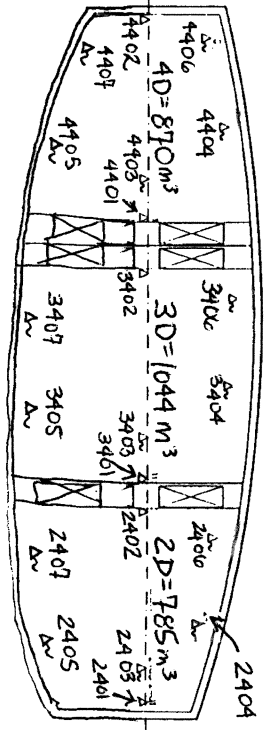
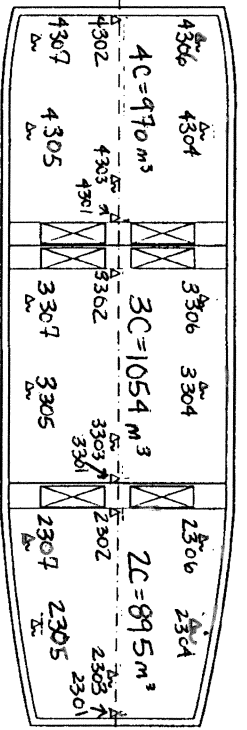
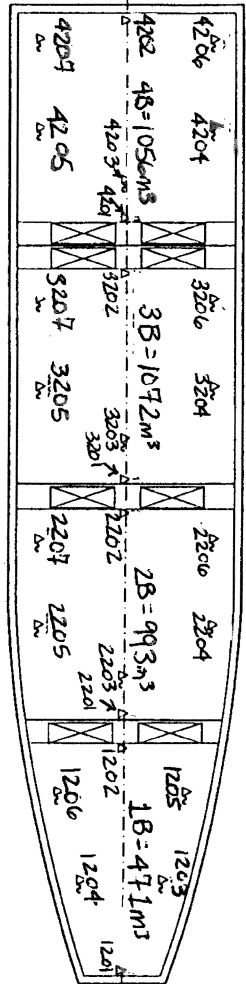
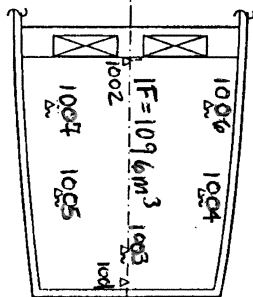
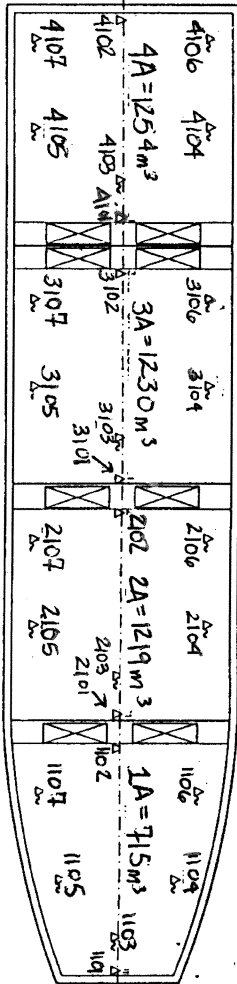
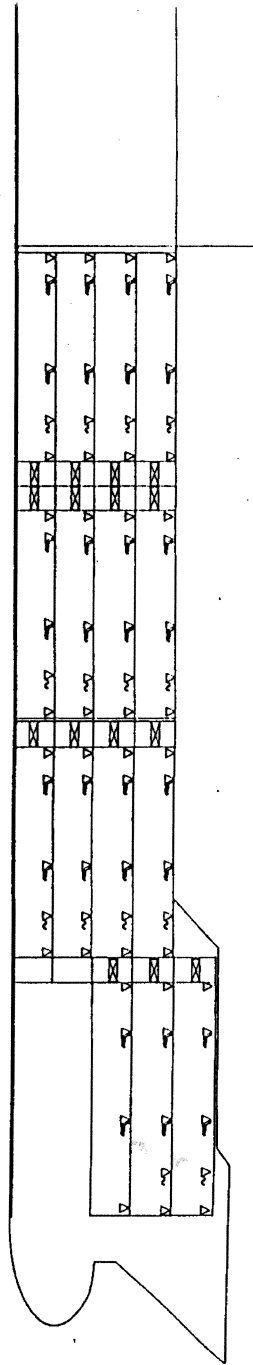


Baltic Pride IMO 8819213



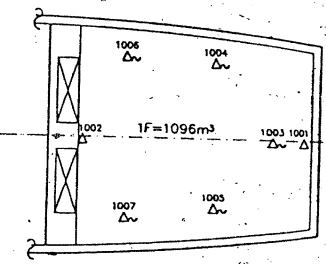
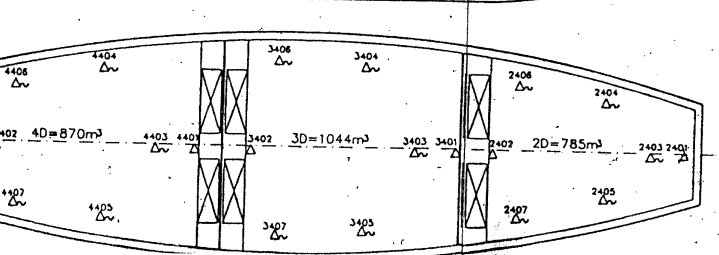
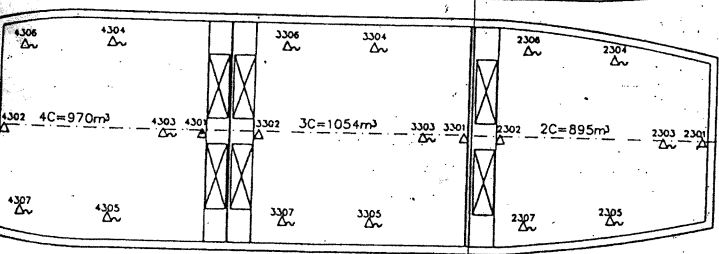
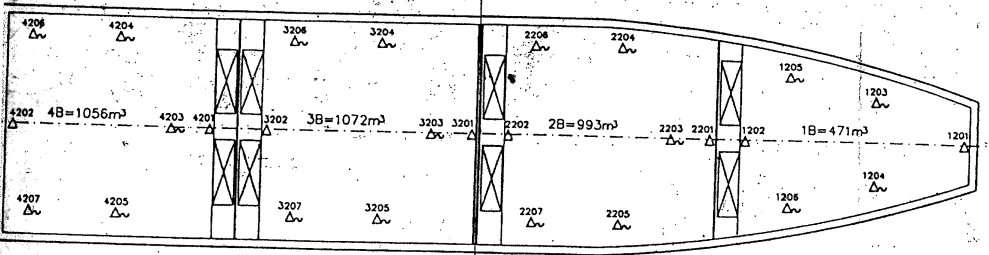
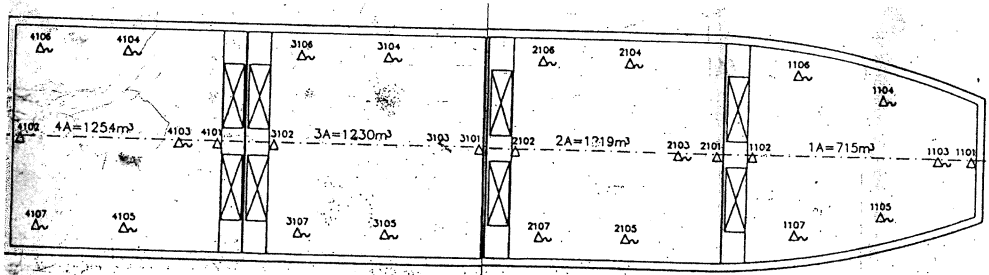
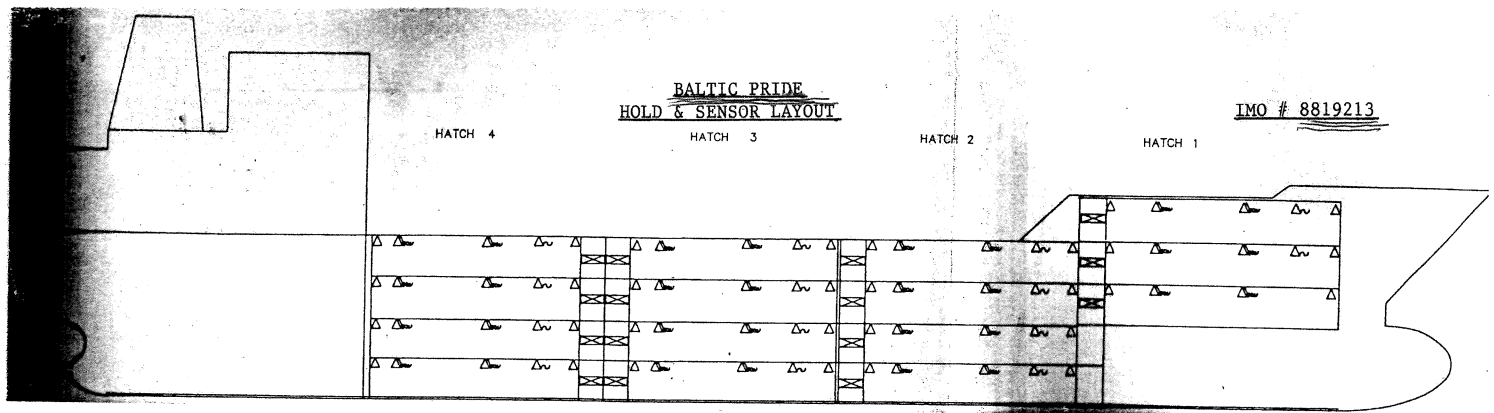
SYMB	NO. OF	DESCRIPTION
△	74	USDA FRUIT SENSOR, PORTABLE - DATA LOG
△	30	USDA AIR SENSOR, FIXED - DATA LOGGER

- AIR SENSORS (Fixed)**
- Shall be located on the center line of the vessel approximately 30 centimeters from the ceiling.
 - Shall be attached in such a way that they do not touch the subfloor and are protected from damage from the cargo.
- FRUIT SENSORS (portable)**
- Shall be stored in recessed compartments to protect from damage when not in use. See para. 5-27731

Shyng Jirapat

BALTIC PRIDE
HOLD & SENSOR LAYOUT

IMO # 8819213



UNITED STATES DEPARTMENT OF AGRICULTURE
Animal and Plant Health Inspection Service
Plant Protection and Quarantine

APPROVED

Robert Beninger
Signature

SYMB.	NO. OF	DESCRIPTION
△ _v	74	USDA FRUIT SENSOR, PORTABLE -
△	30	USDA AIR SENSOR, FIXED - DATA LOG

- AIR SENSORS (fixed)**
- Shall be located on the center line of the vessel approximately 30 centimeters from the ceiling.
 - Shall be attached in such a way that they do not touch the bulkhead and are protected from damage from the cargo.
- FRUIT SENSORS (Portable)**
- Shall be stowed in recessed compartments to protect from damage when not in use. See drawg. F-22731

NO.	DATE	INITIALS	DESCRIPTION