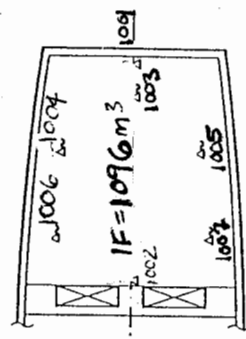
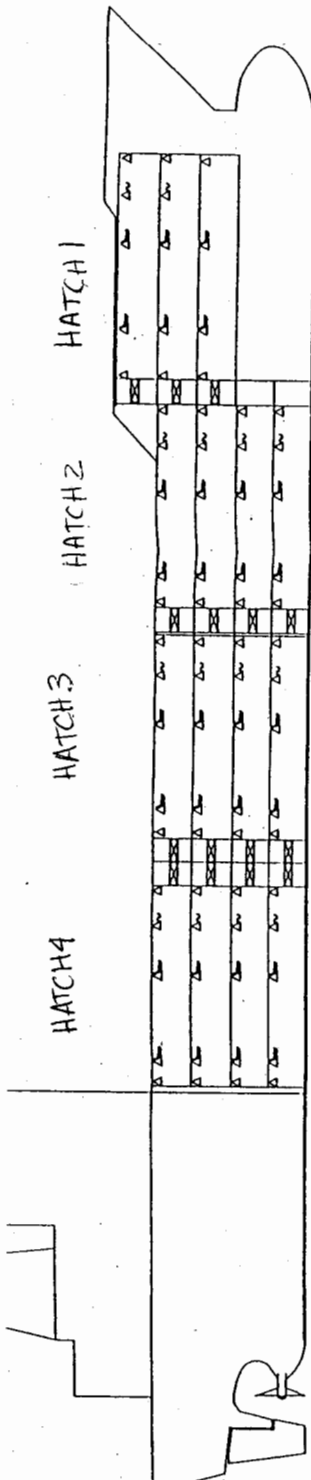


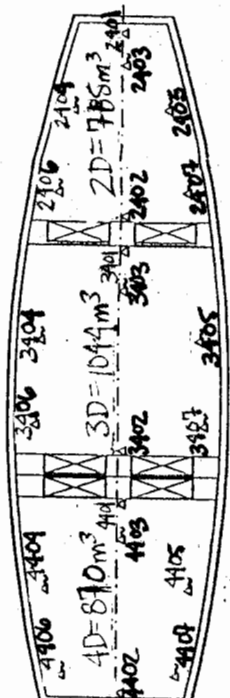
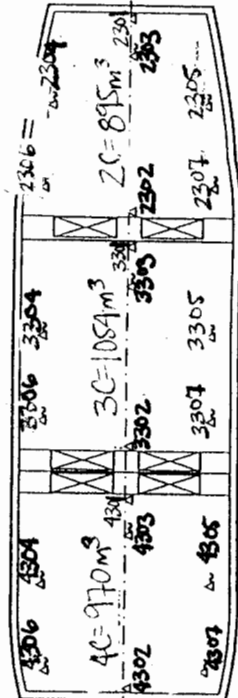
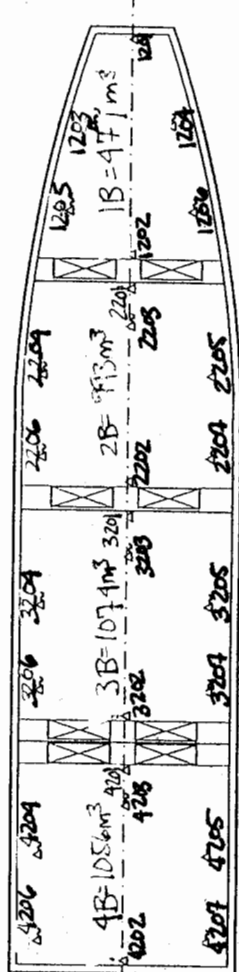
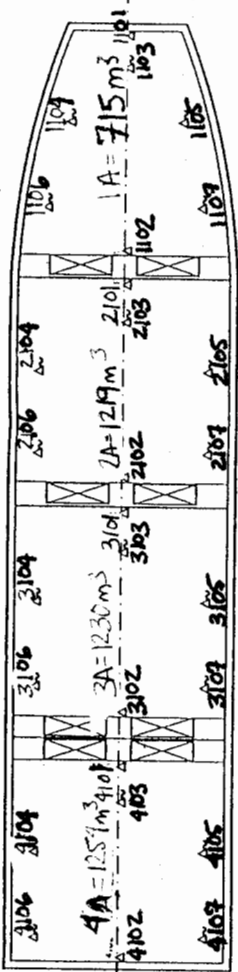
**BALTIC PERFORMER**  
 ex- Hawk Bay  
 IMO No. 9016674  
 Hull No. 864



AIR SENSORS (FIXED)  
 SHALL BE LOCATED ON THE CENTERLINE OF THE VESSEL, APPROXIMATELY 30 CENTIMETERS FROM THE CEILING. SHALL BE ATTACHED IN SUCH A WAY THAT THEY DON'T TOUCH THE BULKHEAD AND ARE PROTECTED FROM DAMAGE CAUSED BY THE CARGO.

FRUIT SENSORS (PORTABLE)  
 SHALL BE STOWED IN RECESSED BOXES TO BE PROTECTED FROM DAMAGE WHEN NOT IN USE. PROPOSAL OF BOXES FOR USDA FRUIT SENSORS. SEE DRAWING F-22731.

SYMBOL	QUANTITY	DESCRIPTION
△	30	USDA AIR SENSOR, FIXED
△	74	USDA FRUIT SENSOR, PORTABLE



SNO 864  
 14728 M REEFER VESSEL  
 YARD: SHIMOKU, JAPAN  
 STAL'S NO: B-9673.0076  
 M/V ROMAN BAY  
 89.12.11  
 27.11  
 0673.0076-1A

Shikoku Dockyard, Hull No. 864

IMO No.	Signature