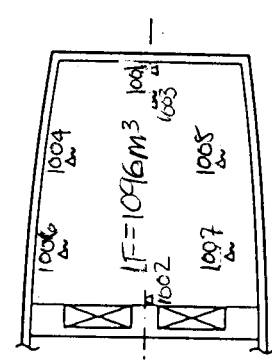
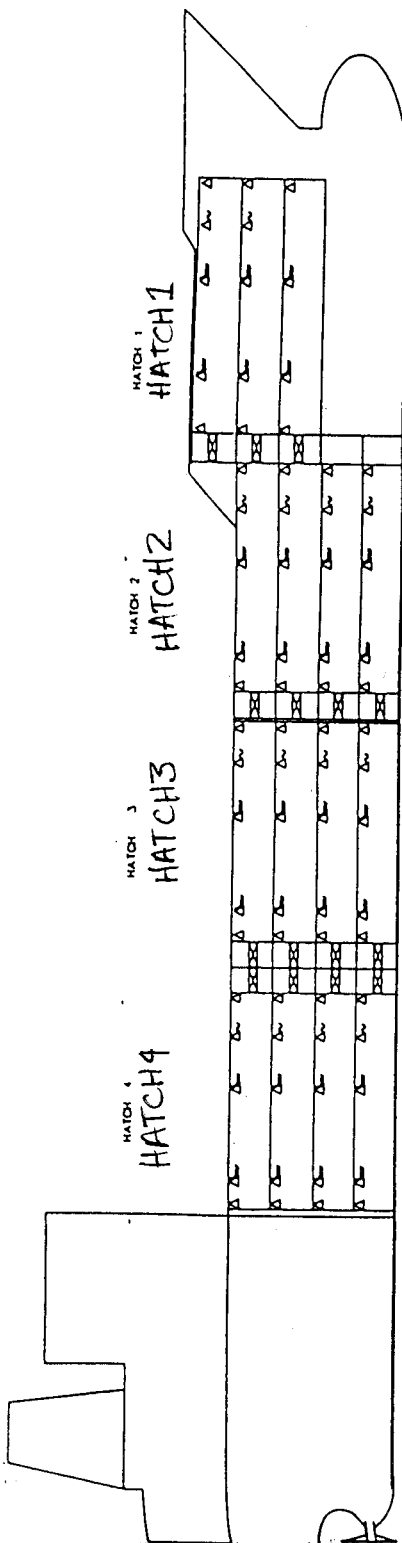
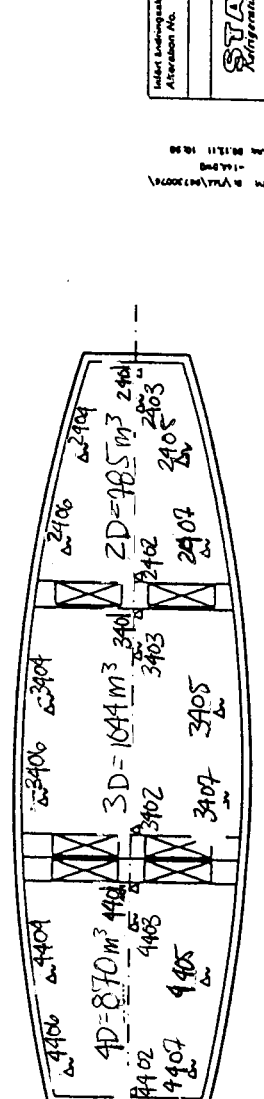
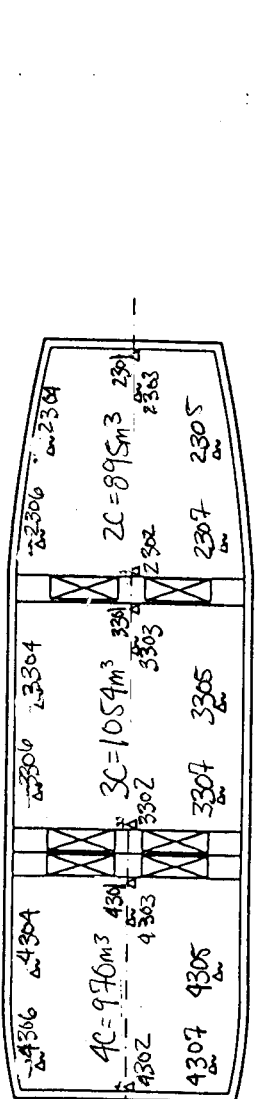
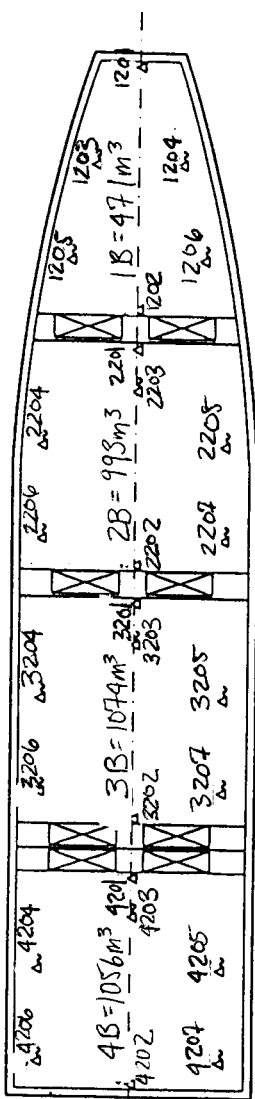
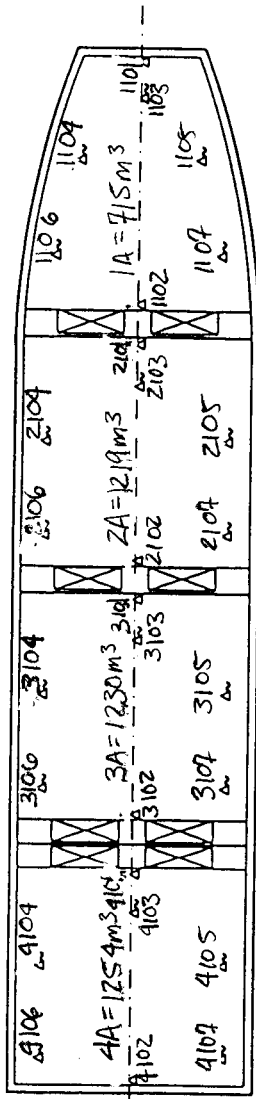


Baltic Prime  
Hull No. 858  
IMO8921470



AIR SENSORS (FIXED)  
SHALL BE LOCATED ON THE CENTERLINE OF THE VESSEL, APPROXIMATELY 30 CENTIMETERS FROM THE CEILING. SHALL BE ATTACHED IN SUCH A WAY THAT THEY DON'T TOUCH THE BULKHEAD AND ARE PROTECTED FROM DAMAGE CAUSED BY THE CARGO.



FRUIT SENSORS (PORTABLE)  
SHALL BE STOWED IN RECESSED BOXES TO BE PROTECTED FROM DAMAGE WHEN NOT IN USE.  
PROPOSAL OF BOXES FOR USDA FRUIT SENSORS, SEE DRAWING F-22731.

SYMBOL	QUANTITY	DESCRIPTION
△	30	USDA AIR SENSOR, FIXED
△	74	USDA FRUIT SENSOR, PORTABLE

SNO 858  
14726 m³ REEFER VESSEL  
YARD: SHIKOKU, JAPAN  
STAL'S NO: 8-9673.0076

*Jimmy Cape* 254

Under-Development Alteration No.	Final Design	Checked Date	Reviewed Checked	Approved Date	Approved Checked	Approved Date
	89.12.11					
LOCATION OF USDA TEMPERATURE SENSORS IN CARGO SPACE						
9673.0076-14A						

1:100  
1:100  
1:100  
1:100