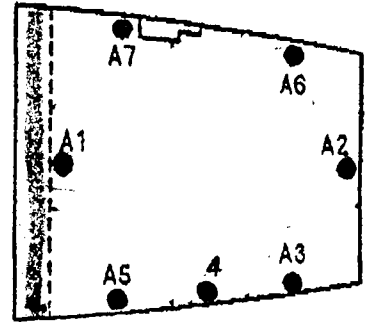


NO.1 A CARGO HOLD



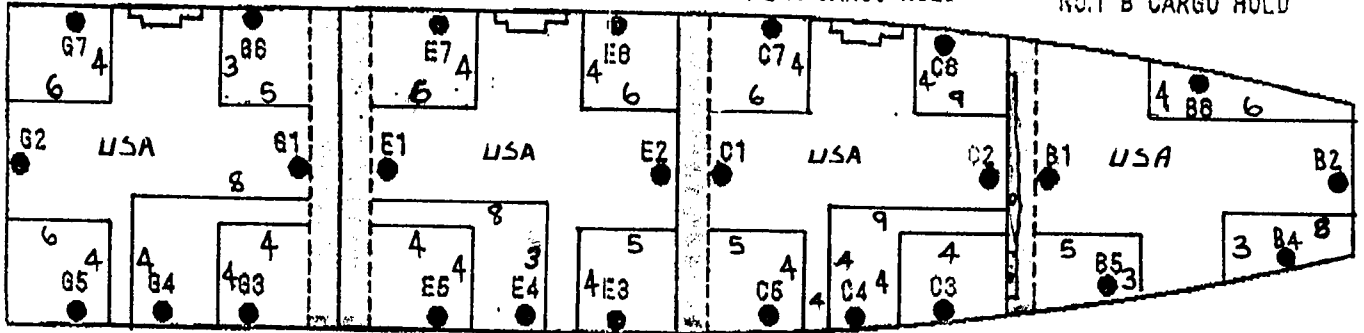
BADRINATH  
Hull No. 2518

NO.4 A CARGO HOLD

NO.3 A CARGO HOLD

NO.2 A CARGO HOLD

NO.1 B CARGO HOLD

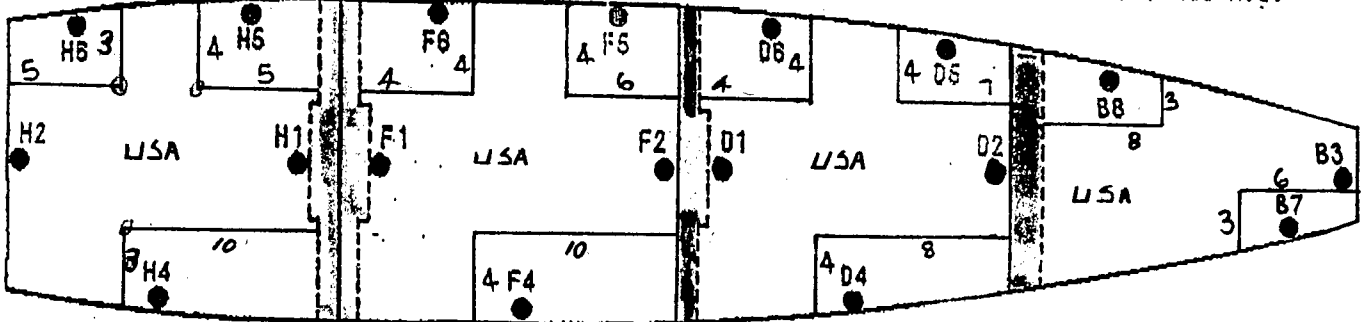


NO.4 B CARGO HOLD

NO.3 B CARGO HOLD

NO.2 B CARGO HOLD

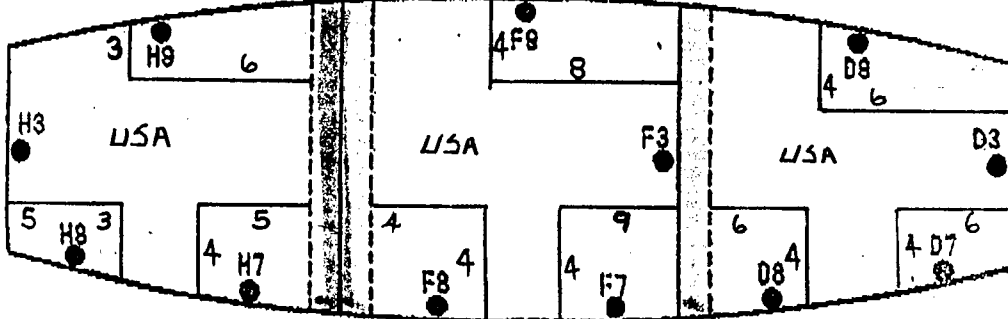
NO.1 C CARGO HOLD



NO.4 C CARGO HOLD

NO.3 C CARGO HOLD

NO.2 C CARGO HOLD



● - 20 - FIXED SENSOR  
● - 43 - NON-FIXED SENSOR