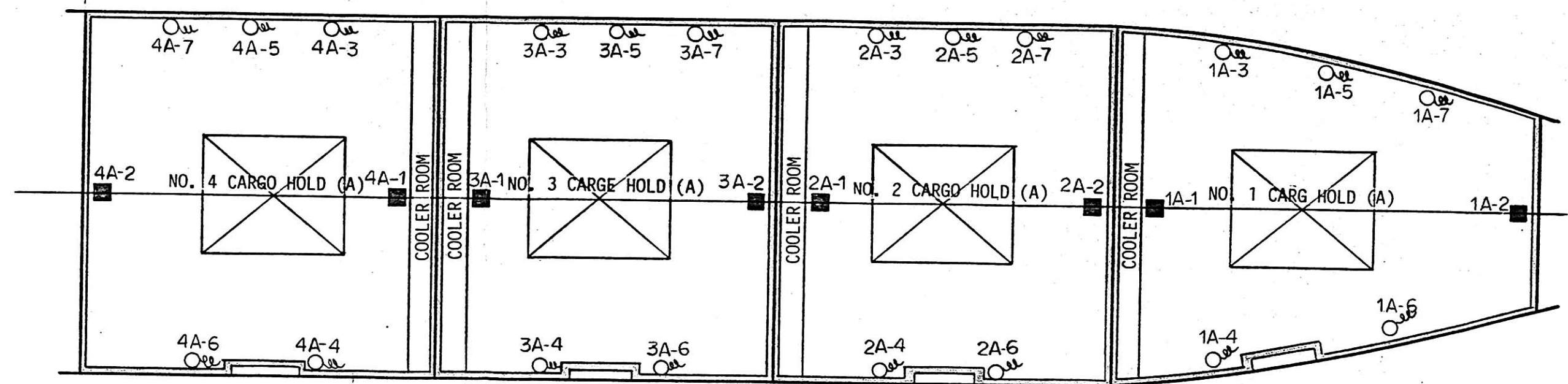
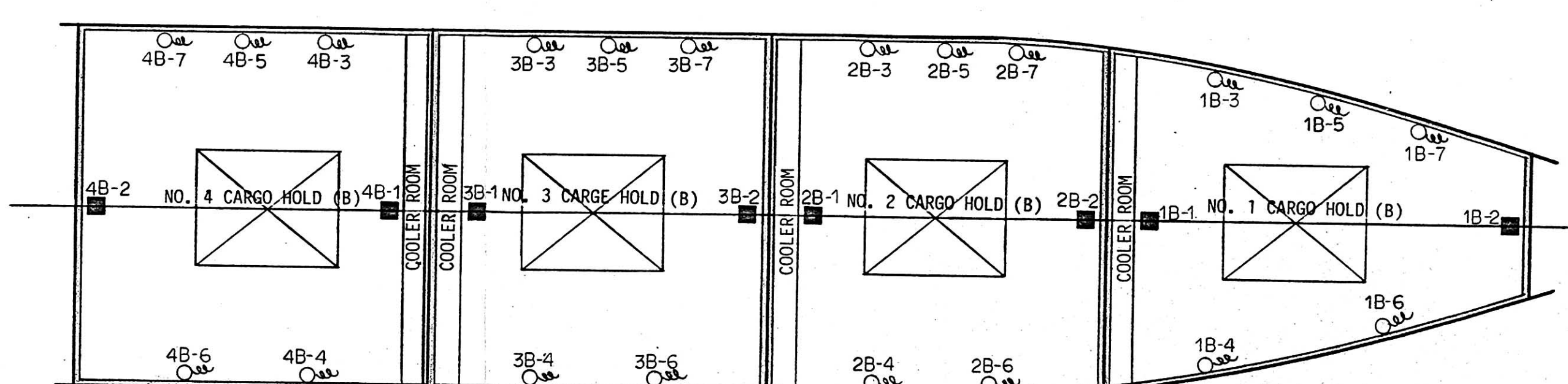


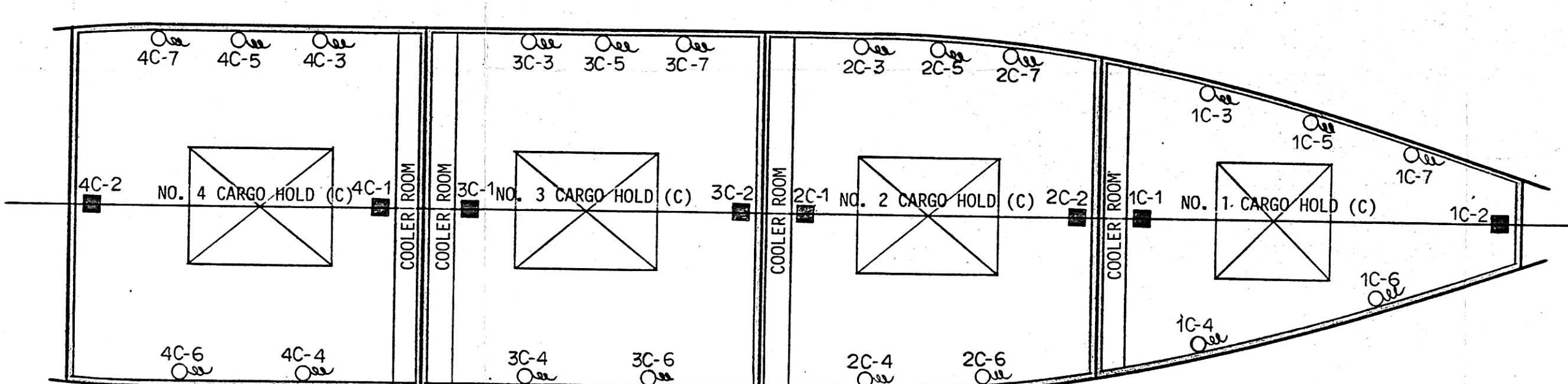
NO. 6 DECK				
NO. 5 DECK	NO. 4 CARGO HOLD (A)	NO. 3 CARGO HOLD (A)	NO. 2 CARGO HOLD (A)	NO. 1 CARGO HOLD (A)
NO. 4 DECK	NO. 4 CARGO HOLD (B)	NO. 3 CARGO HOLD (B)	NO. 2 CARGO HOLD (B)	NO. 1 CARGO HOLD (B)
NO. 3 DECK	NO. 4 CARGO HOLD (C)	NO. 3 CARGO HOLD (C)	NO. 2 CARGO HOLD (C)	NO. 1 CARGO HOLD (C)
NO. 2 DECK	NO. 4 CARGO HOLD (D)	NO. 3 CARGO HOLD (D)	NO. 2 CARGO HOLD (D)	NO. 1 CARGO HOLD (D)
NO. 1 DECK	NO. 4 CARGO HOLD (E)	NO. 3 CARGO HOLD (E)	NO. 2 CARGO HOLD (E)	



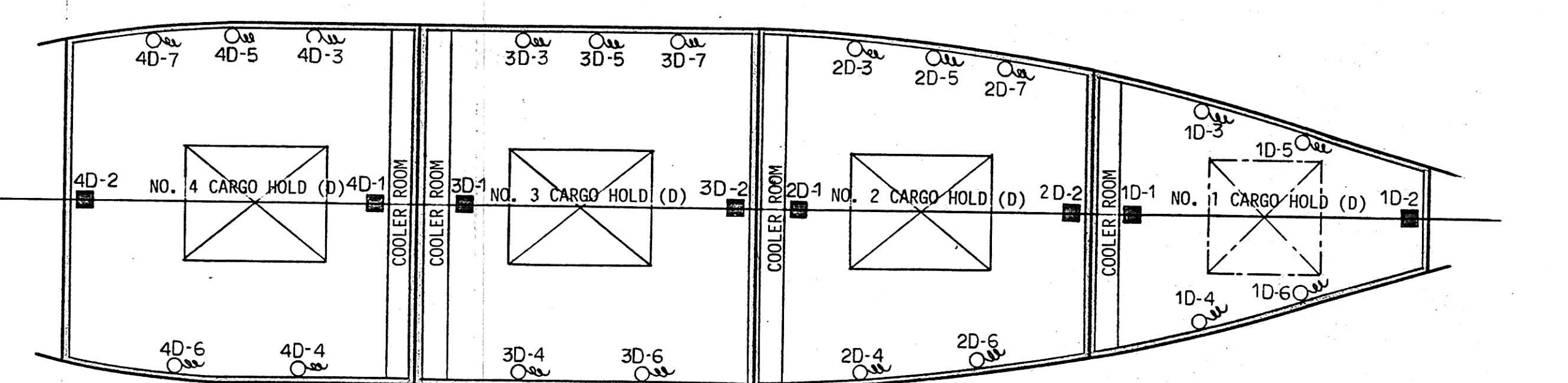
NO. 5 DECK



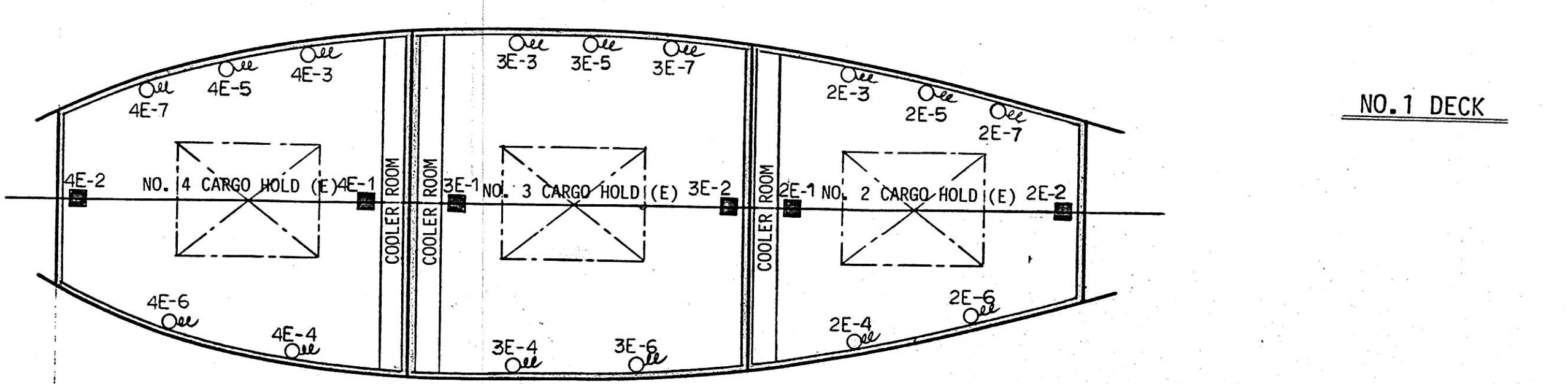
NO. 4 DECK



NO. 3 DECK

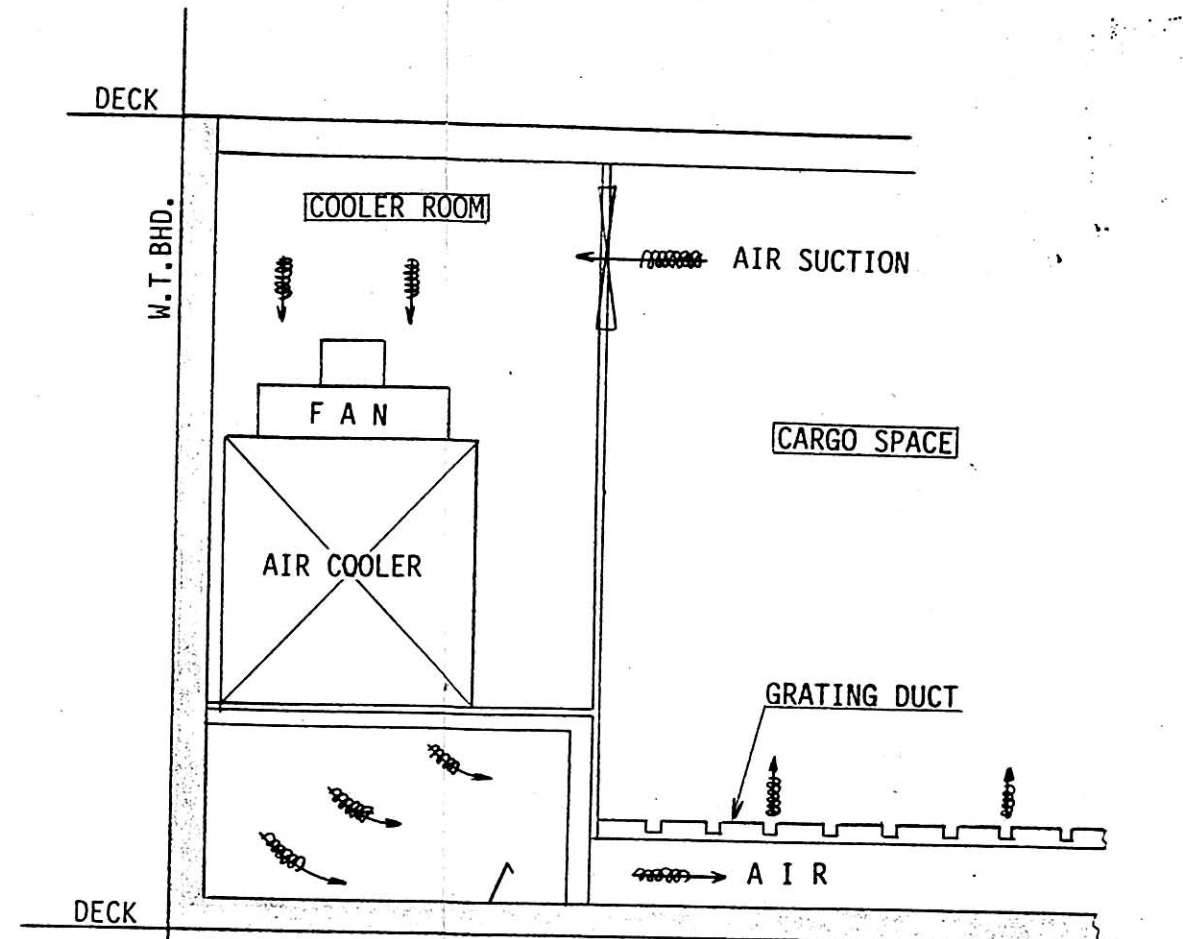


NO. 2 DECK



NO. 1 DECK

■ SHOWS FIXED SENSOR
 ○ SHOWS NON-FIXED SENSOR



HOLD NAME	HOLD VOLUME	FAN	REMARKS
		M3/min x (Kw) x SETS	
NO. 1A	1001	283/140 x 3.7/0.75 x 6	
NO. 1B	880	260/130 x 3.7/0.75 x 6	
NO. 1C	715	210/105 x 3.7/0.75 x 6	
NO. 1D	462	210/105 x 3.7/0.75 x 4	
NO. 2A	979	280/140 x 3.7/0.75 x 6	
NO. 2B	968	260/130 x 3.7/0.75 x 6	
NO. 2C	957	260/130 x 3.7/0.75 x 6	
NO. 2D	880	260/130 x 3.7/0.75 x 6	
NO. 2E	682	210/105 x 3.7/0.75 x 6	
NO. 3A	968	280/140 x 3.7/0.75 x 6	
NO. 3B	990	260/130 x 3.7/0.75 x 6	
NO. 3C	990	260/130 x 3.7/0.75 x 6	
NO. 3D	979	260/130 x 3.7/0.75 x 6	
NO. 3E	924	260/130 x 3.7/0.75 x 6	
NO. 4A	1012	280/140 x 3.7/0.75 x 6	
NO. 4B	1023	280/140 x 3.7/0.75 x 6	
NO. 4C	1023	280/140 x 3.7/0.75 x 6	
NO. 4D	957	260/130 x 3.7/0.75 x 6	
NO. 4E	770	210/105 x 3.7/0.75 x 6	

FOR APPROVAL
 TO BE RETURNED

UNITED STATES DEPARTMENT OF AGRICULTURE
 Animal and Plant Health Inspection Service
 Plant Protection and Quarantine
 APPROVED
 Signature: [Signature] 12/1/77

SABROE		MESSRS TUSWEISHI SHIPBUILDING CO., LTD		
NIPPON SABROE CO., LTD.		HNO. 859 860		
		MESSRS HASHIHAMA SHIPBUILDING CO., LTD		
		SNO. 603 604		
ARRANGMENT OF U.S.D.A. SENSOR FOR REF CARGO PLANT				
DEP. CHIEF		CODE No.	DRAWING No.	REVISED
SECT. CHIEF		12-8554	36426	
CHECKER	[Signature]			
DRAWER	[Signature]			
DATE DRAWN				
SCALE				
1/300				

