

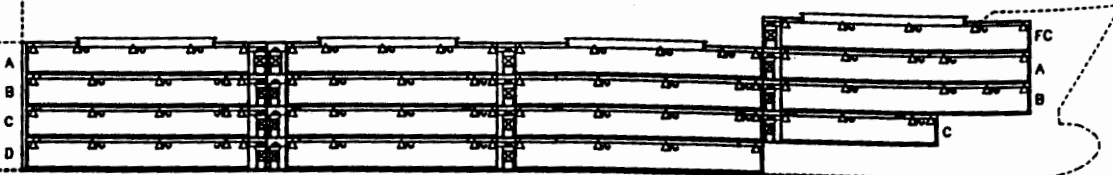
HOLD 4

HOLD 3

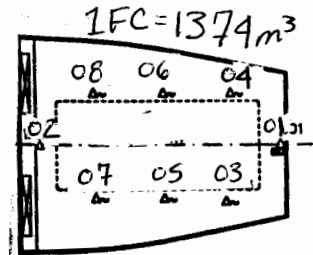
HOLD 2

HOLD 1

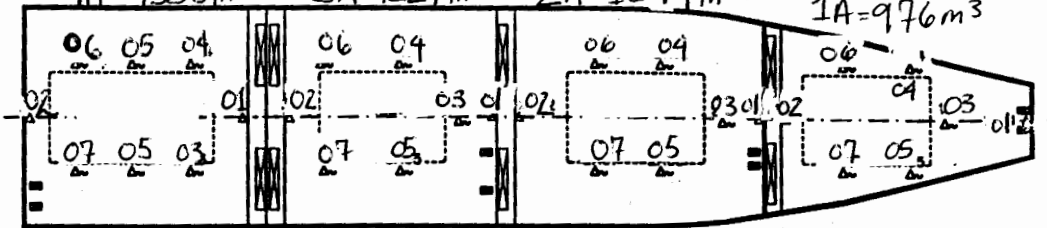
Ivory Girl  
Hull No. 881



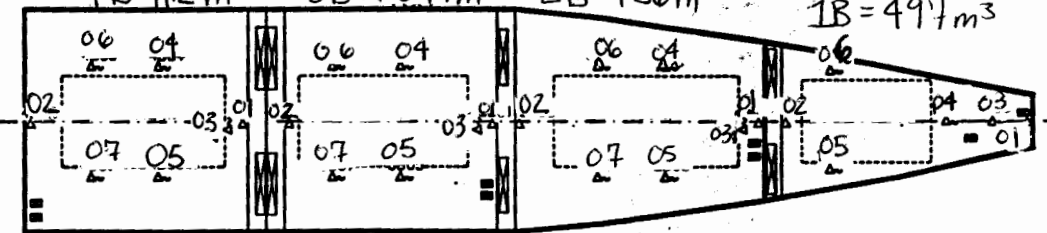
4A = 1335 m<sup>3</sup>    3A = 1227 m<sup>3</sup>    2A = 1244 m<sup>3</sup>    1A = 976 m<sup>3</sup>



1FC = 1374 m<sup>3</sup>

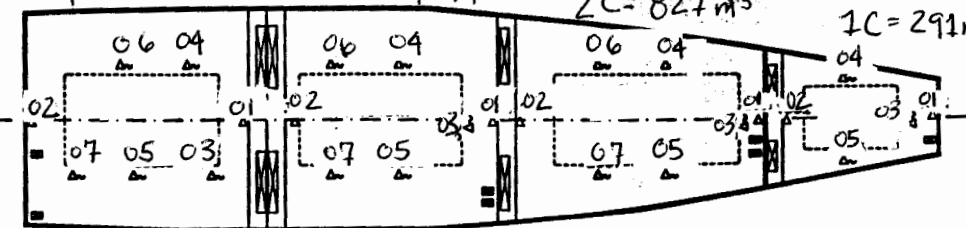


4B = 1112 m<sup>3</sup>    3B = 1094 m<sup>3</sup>    2B = 956 m<sup>3</sup>    1B = 497 m<sup>3</sup>



**AIR SENSORS (FIXED)**  
SHALL BE LOCATED ON THE CENTERLINE OF THE VESSEL APPROXIMATELY 30 CENTIMETERS FROM THE CEILING.  
SHALL BE ATTACHED IN SUCH A WAY THAT THEY DON'T TOUCH THE BULKHEAD AND ARE PROTECTED FROM DAMAGE CAUSED BY THE CARGO.

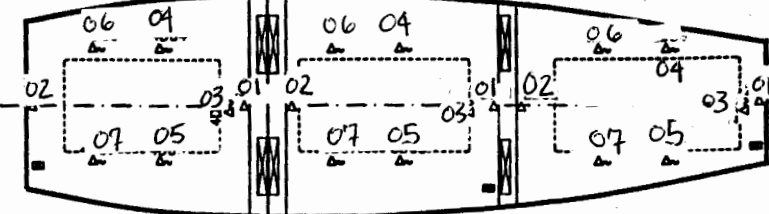
4C = 937 m<sup>3</sup>    3C = 1045 m<sup>3</sup>    2C = 827 m<sup>3</sup>    1C = 291 m<sup>3</sup>



**FRUIT SENSORS (PORTABLE)**  
SHALL BE STORED IN RECESSED BOXES TO BE PROTECTED FROM DAMAGE WHEN NOT IN USE.  
PROPOSAL OF BOXES FOR USDA FRUIT SENSORS, SEE D

SYMBOL	QUANTITY	DESCRIPTION
	32	USDA AIR SENSOR, FIXED
	70	USDA FRUIT SENSOR, PORTABLE

4D = 871 m<sup>3</sup>    3D = 1000 m<sup>3</sup>    2D = 789 m<sup>3</sup>



15.575 m<sup>3</sup> REEFER VESSEL

<b>Shikoku Dockyard S-881</b>						
APPROVED BY: DATE: 96.02.26	A2	Instr. Schiffspläne Alternativ No.	Stal PT/GBB	Kontrolliert Checked	Gebilligt Approved	Arbeitsnummer Arbeits No.
		a,b,	96.02.26	JB	AB	Arb. nr. Sheet No.
		<b>ABB</b>	LOCATION OF USDA TEMPERATURE SENSORS IN CARGO SPACE			95447
		ABB Stal Marine				

*Ivory Girl*