

SYMBOL	QUANTITY	DESCRIPTION	PT100 SENSOR TYPE
Δ	28	USDA AIR SENSOR, FIXED	HS102-4.1
Δv	19	USDA FRUIT SENSOR, PORTABLE	HS102-12

HOLD		VOLUME (m ³)
1AB	1T+1UT	830
1C	1LT	400
1D	1TT	230
2AB	2T+2UT	840
2C	2LT	550
2D	2TT	520
3AB	3T+3UT	810
3C	3LT	540
3D	3TT	540
4AB	4T+4UT	820
4C	4LT	500
4D	4TT	430

USDA AIR SENSORS, FIXED

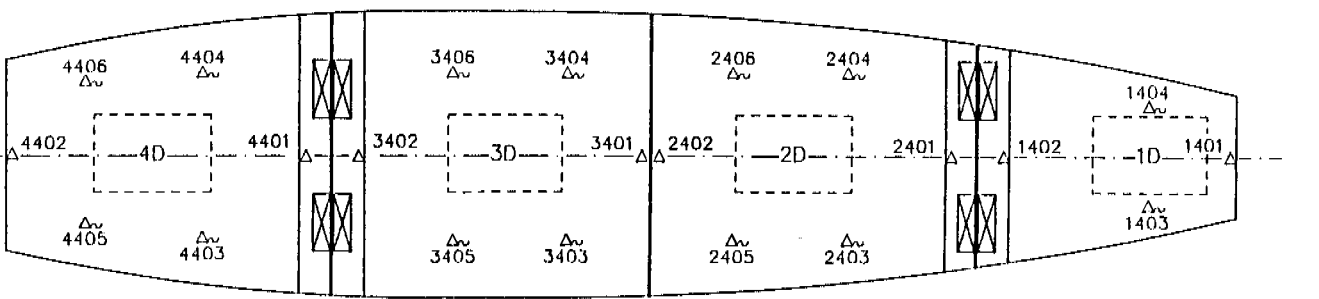
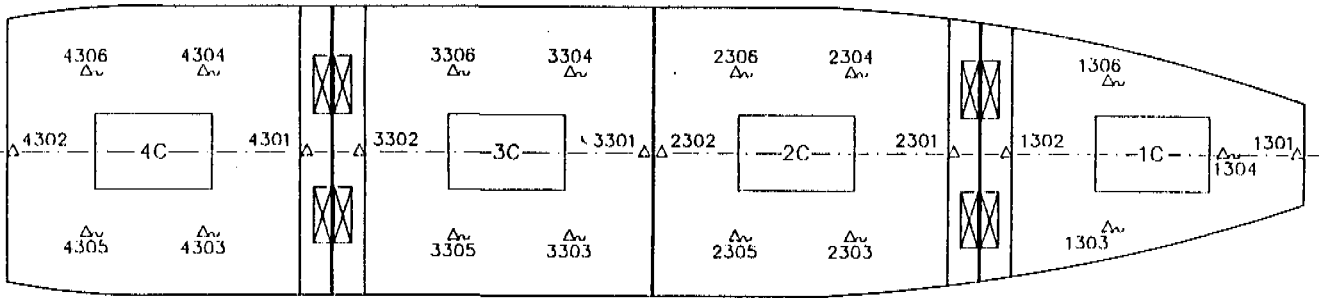
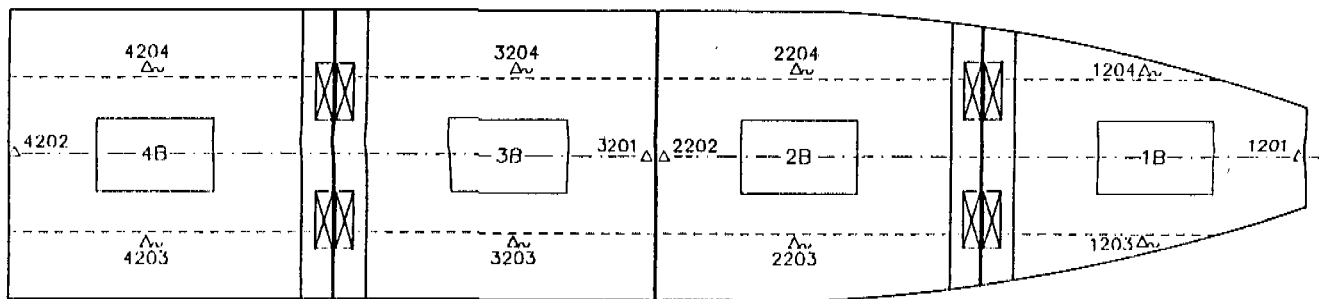
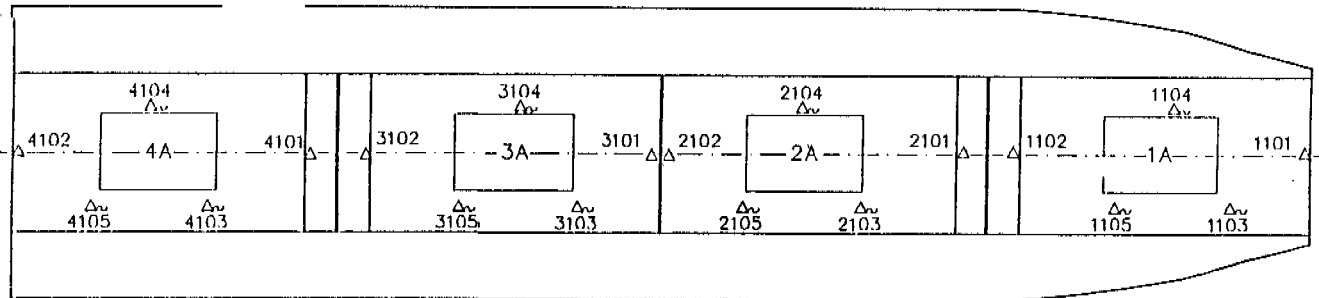
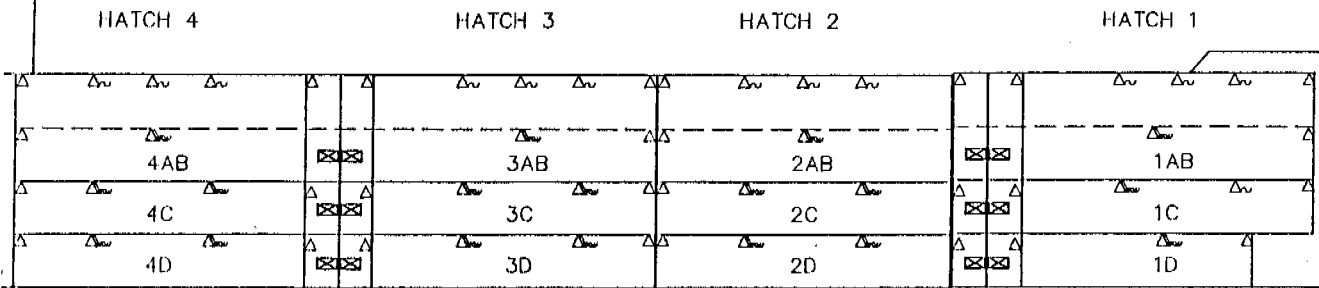
- SHALL BE LOCATED ON THE CENTER LINE OF THE VESSEL APPROXIMATELY 30 CENTIMETERS FROM THE CEILING.
- SHALL BE ATTACHED IN SUCH A WAY THAT THEY DO NOT TOUCH THE BULKHEAD AND ARE PROTECTED FROM DAMAGE FROM THE CARGO. See drawing F-22731.

USDA FRUIT SENSORS, PORTABLE

- SHALL BE STOWED IN RECESSED COMPARTMENTS TO PROTECT FROM DAMAGE WHEN NOT IN USE. See drawing F-22731.

APPROVED
[Signature]

1. DRAWING NO. 2. TITLE 3. DATE 4. BY	Inset Endingshede Attention No.	Rind Drawn/ACM/BN 1991-09-03	Kontrollerad Checked BPT	Godkänd Approved	Arkivnummer Archive No.	<input type="checkbox"/> DF	<input type="checkbox"/> UGF
	STAL SVEVÄRSTAD BYGGEN	LOCATION OF USDA TEMPERATURE SENSORS IN CARGO SPACE			Arkiv Sheet No.	Arkiv Tot. No. of sh.	9654.0045-14A



KLEVEN Hull Nos 115 + 114