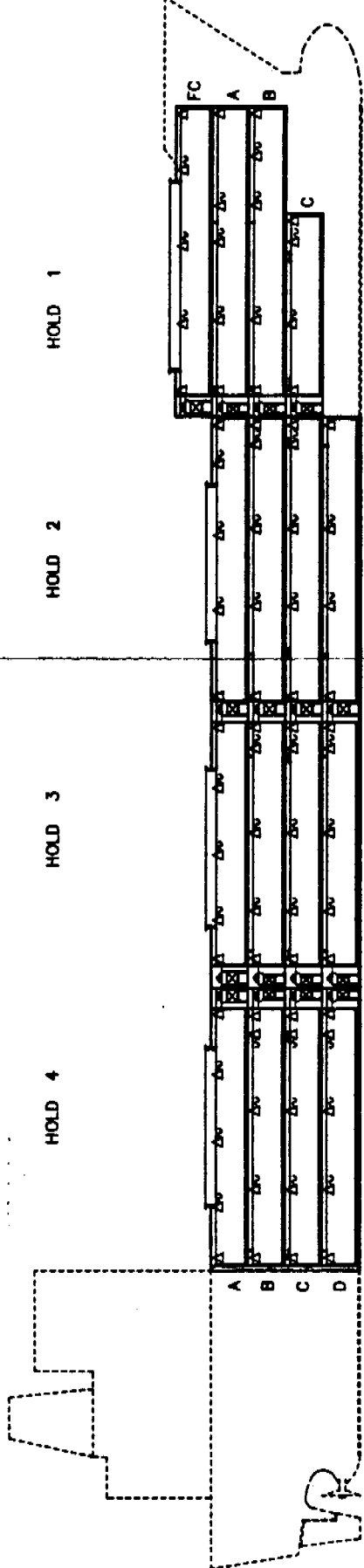


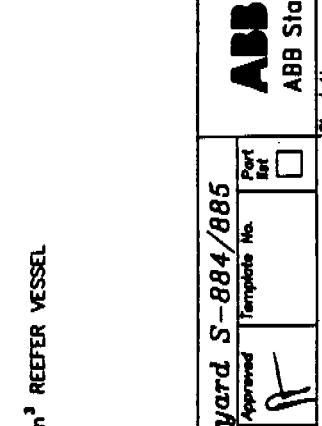
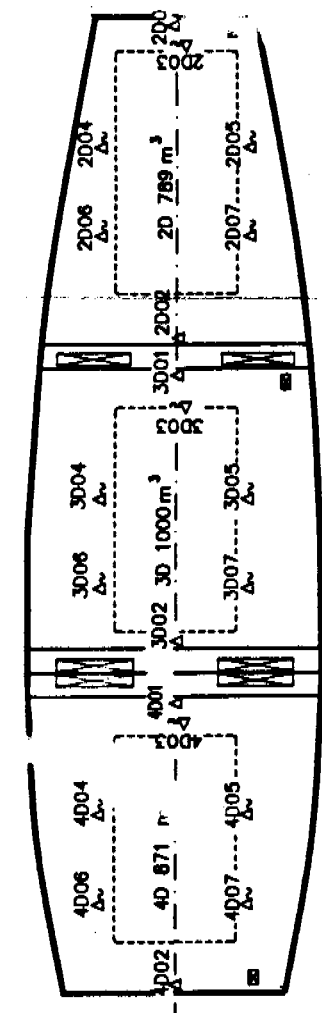
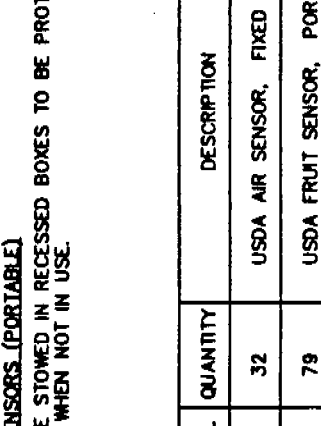
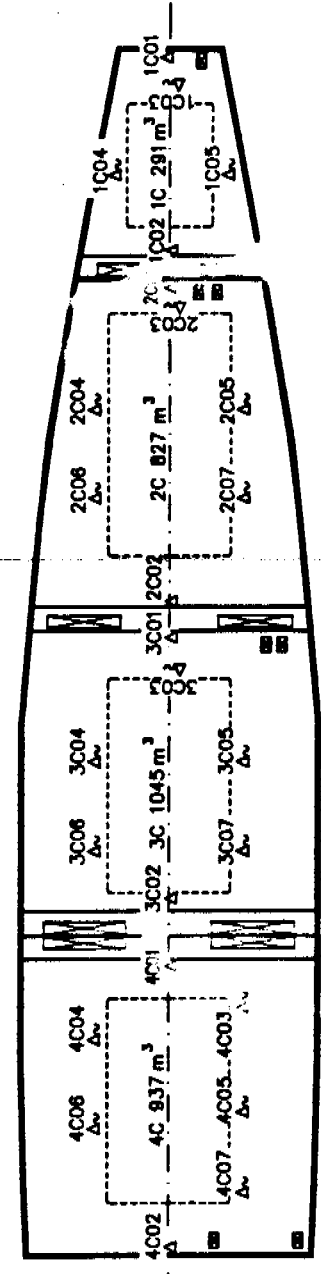
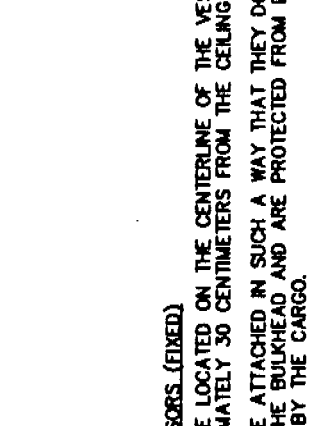
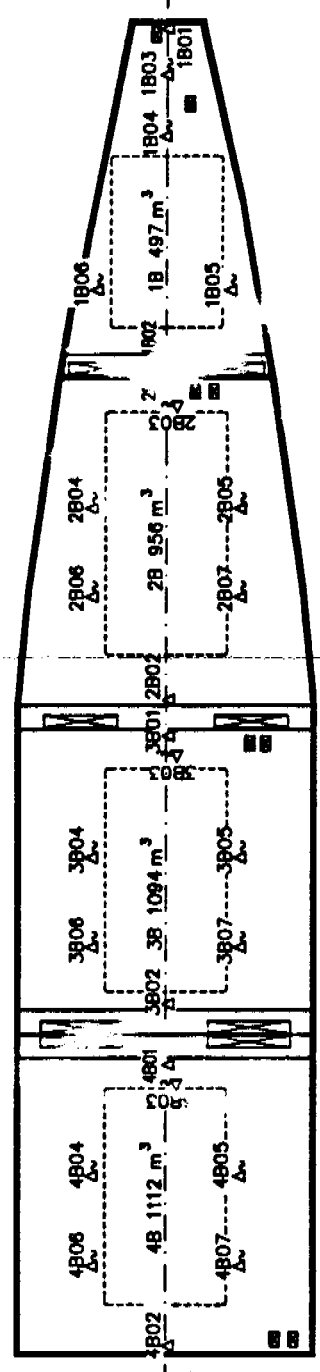
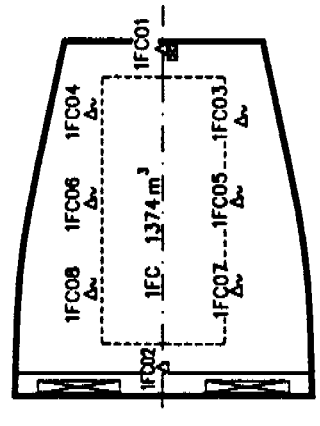
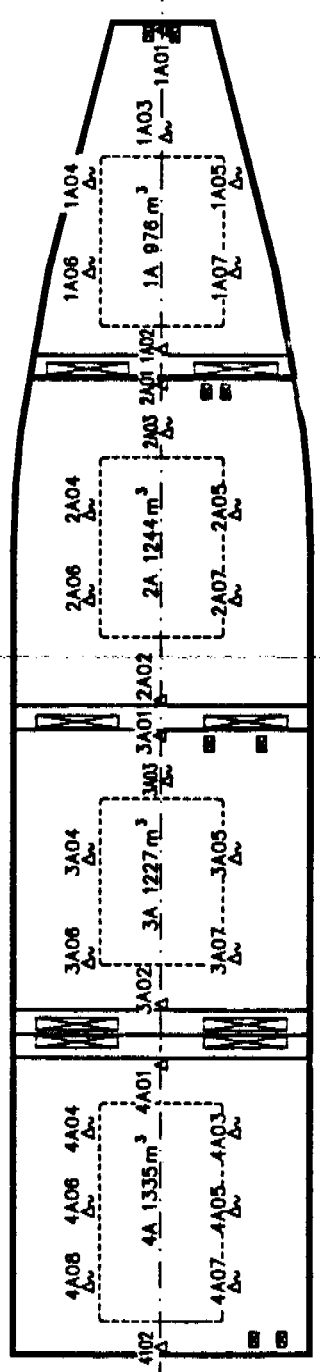
THIS DOCUMENT MUST NOT BE COPIED WITHOUT OUR CONSENT, NOR MUST BE MADE KNOWN TO OTHERS OR OTHERWISE UNAUTHORIZEDLY USED. ALL DATA SUBJECT TO CHANGE WITHOUT NOTICE. STAL MARINE AB



Horn Wind
Hull No. 885

UNITED STATES DEPARTMENT OF AGRICULTURE
Animal and Plant Health Inspection Service
Plant Protection and Quarantine

W. Scott Wood
Signature
3-21-97
Date



AIR SENSORS (FIXED)
SHALL BE LOCATED ON THE CENTERLINE OF THE VESSEL, APPROXIMATELY 30 CENTIMETERS FROM THE CEILING.
SHALL BE ATTACHED IN SUCH A WAY THAT THEY DON'T TOUCH THE BULKHEAD AND ARE PROTECTED FROM DAMAGE CAUSED BY THE CARGO.

FRUIT SENSORS (PORTABLE)
SHALL BE STOWED IN RECESSED BOXES TO BE PROTECTED FROM DAMAGE WHEN NOT IN USE.

SYMBOL	QUANTITY	DESCRIPTION
△	32	USDA AIR SENSOR, FIXED
△	79	USDA FRUIT SENSOR, PORTABLE

15.575 m³ REEFER VESSEL

96-11-15

Project: A2
Design size: A2
Date: 96.02.26
Denomination: LOCATION OF USDA TEMPERATURE SENSORS IN CARGO SPACE

Shikoku Dockyard S-884/885

Checked: [Signature]
Approved: [Signature]

Part: []
Template No. []

ABB
ABB Stal Marine

Sheet No. []
Drawing No. 96442001-114
Rev. No. []

No.	Alteration	Date	Sign.