

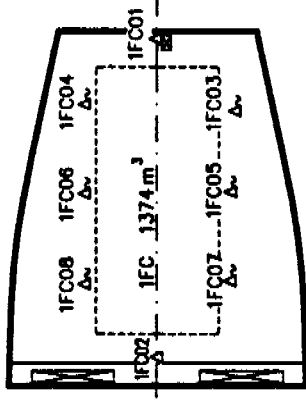
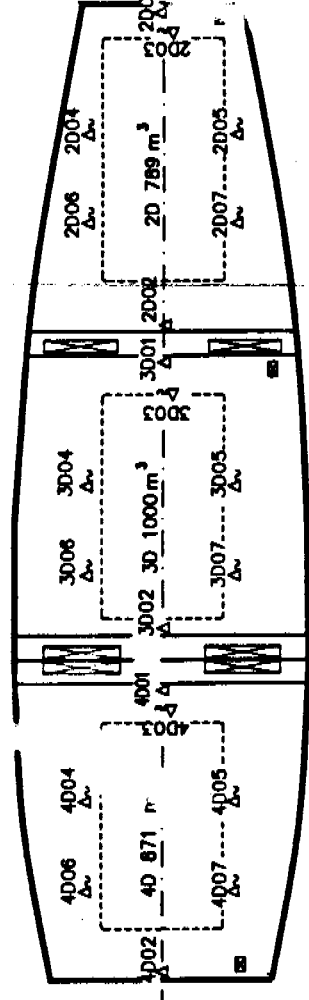
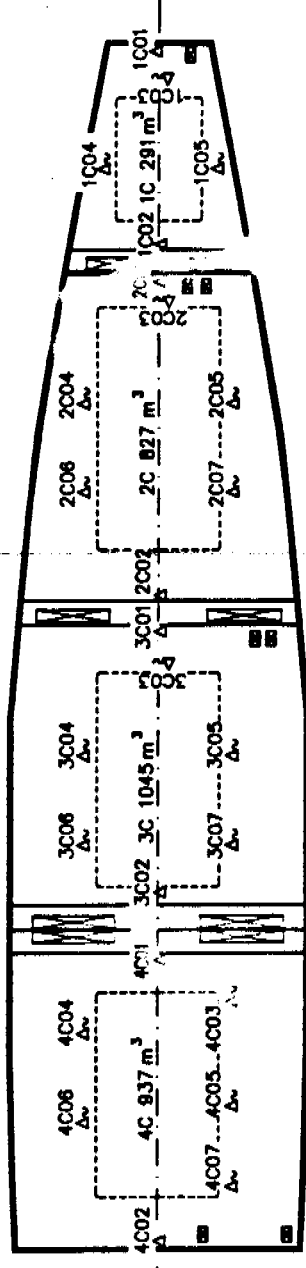
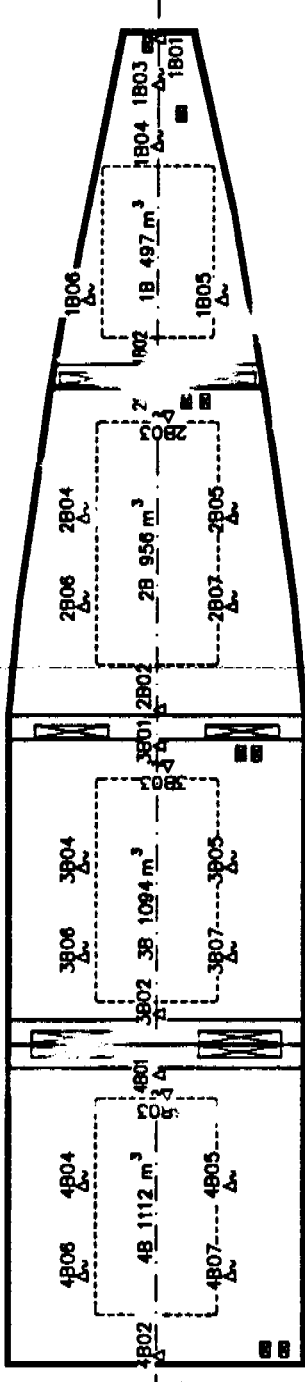
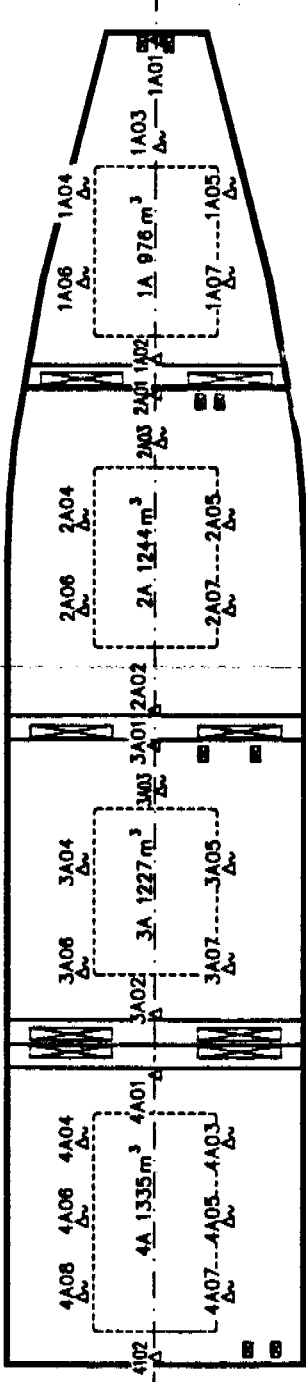
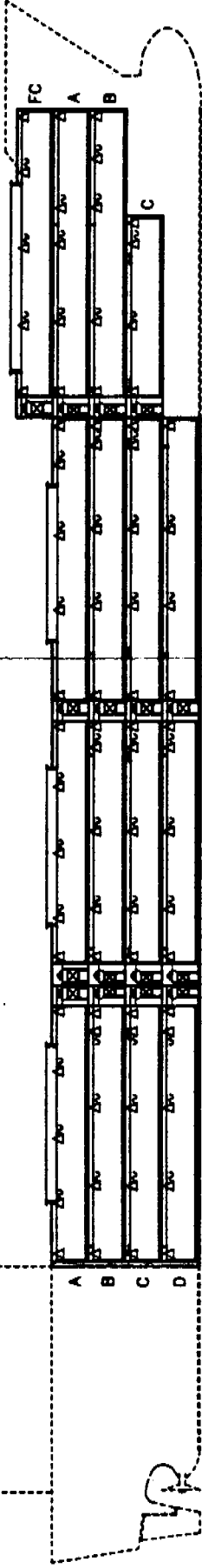
Caribbean Star
Hull No. 884

96-11-15

UNITED STATES DEPARTMENT OF AGRICULTURE
Animal and Plant Health Inspection Service
Plant Protection and Quarantine

W. Scott Wood
Signature

3-21-97
Date



AIR SENSORS (FIXED)
SHALL BE LOCATED ON THE CENTERLINE OF THE VESSEL, APPROXIMATELY 30 CENTIMETERS FROM THE CEILING.
SHALL BE ATTACHED IN SUCH A WAY THAT THEY DON'T TOUCH THE BULKHEAD AND ARE PROTECTED FROM DAMAGE CAUSED BY THE CARGO.

FRUIT SENSORS (PORTABLE)
SHALL BE STORED IN RECESSED BOXES TO BE PROTECTED FROM DAMAGE WHEN NOT IN USE.

SYMBOL	QUANTITY	DESCRIPTION
△	32	USDA AIR SENSOR, FIXED
△	79	USDA FRUIT SENSOR, PORTABLE

15,575 m³ REEFER VESSEL

Project: A2
Shikoku Dockyard S-884/885

Drawn P.T./G.B.F.
Date: 96.02.26

Checked: [Signature]
Approved: [Signature]

Template No. [Blank]
Part: [Blank]

Denomination: LOCATION OF USDA TEMPERATURE SENSORS IN CARGO SPACE

Sheet No. [Blank]
Drawing No. 96442001-114

Total No. of sh. [Blank]
Rev. No. [Blank]

Project: A2
Shikoku Dockyard S-884/885
Drawn P.T./G.B.F.
Date: 96.02.26
Checked: [Signature]
Approved: [Signature]
Template No. [Blank]
Part: [Blank]
Denomination: LOCATION OF USDA TEMPERATURE SENSORS IN CARGO SPACE
Sheet No. [Blank]
Drawing No. 96442001-114
Total No. of sh. [Blank]
Rev. No. [Blank]

Rev.	Alteration	Date	Sign.